

AVAILABLE

Southport Road
Spartanburg, SC

Site Analysis

Commercial Sales

Development



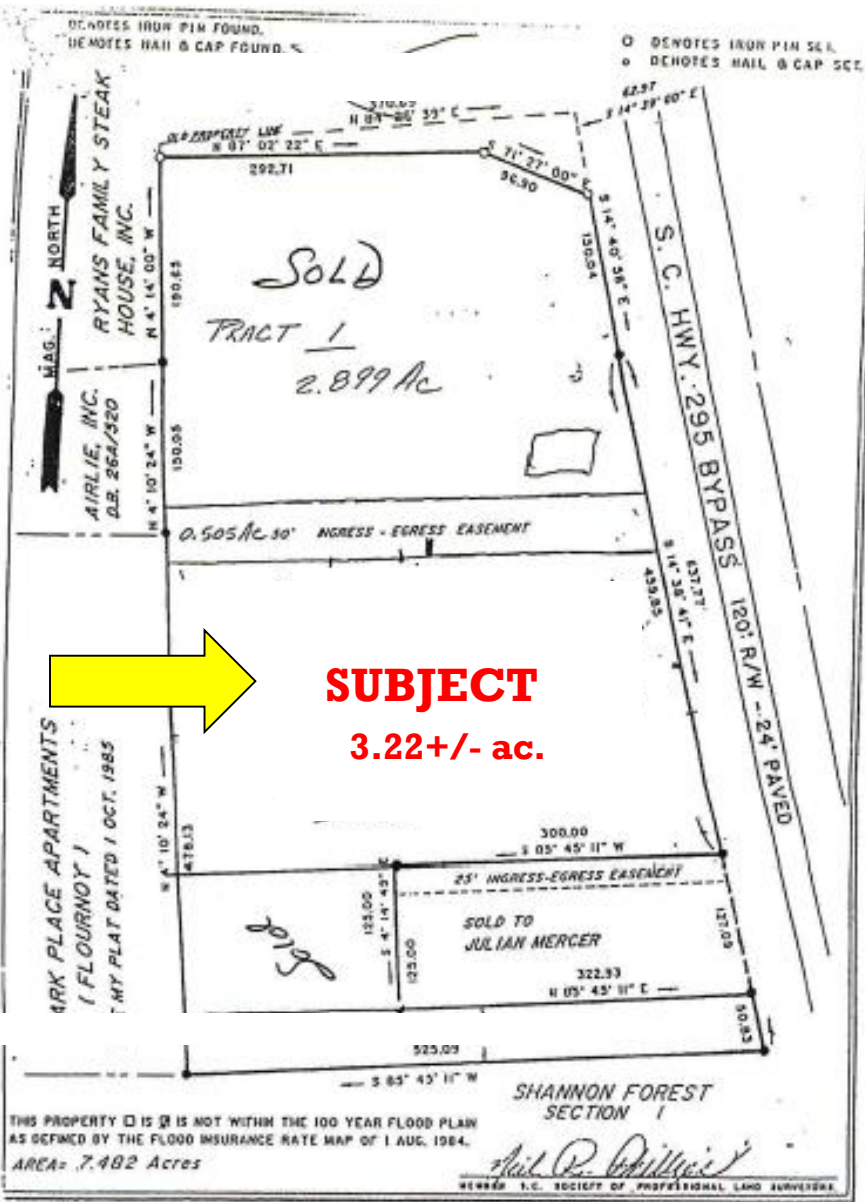
- 3.2± acres located on Southport Road just off of John B. White Sr. Blvd.
- 323'± road frontage; 493± depth
- Zoned B-1 - General Business District
- Level topo
- All utilities to site
- Spartanburg County Tax Map # 6-21-14-064.03

SALE PRICE:
\$ 800,000



No warranty or representation, expressed or implied, is made to the accuracy of the information contained herein, and the same is submitted subject to errors, omissions, change of price, rental or other conditions, imposed by the principles.

Andy Hayes/Ben Hines, CFP, CCIM
380 S. Pine Street
Spartanburg, SC 29302
Tel 864.583.1001 C – 864-706-0189
Fax 864.585.6188
ahayes@spencerhines.com
benhines@spencerhines.com
www.spencerhines.com



SUBJECT
3.22 +/- ac.

I HEREBY CERTIFY THAT THE RATIO OF PRECISION OF THE FIELD SURVEY IS 1/10,000+ BEFORE BALANCING, AND THE AREA WAS DETERMINED BY COMPUTER.

COUNTY: SPARTANBURG	TOWN OR COMMUNITY: NEAR CITY LIMITS OF SPARTANBURG	STATE: SOUTH CAROLINA
DATE: MAY 1986	BLOCK MAP: SHEET: G-21-14	FIELD CHIEF: MANCY BERRY
SCALE: 1"=100'	PARCEL: G4	DRAWN BY: MANCY BERRY

SURVEYED BY: NEIL R. PHILLIPS, PROFESSIONAL LAND SURVEYOR

574-7885 116 E. BLACKSTONE ROAD MOORE, S.C. 574-8424

