

North Auburn Logistics

6607 S 287th Street
Auburn, WA

Now Under Construction
Delivery Q1 2018

261,553 SF of building

14.3 acre site

45 dock-high doors

2 grade-level doors

32' clear height

ESFR sprinklers

176 parking stalls

Excellent freeway access via
S 277th Street

130' truck court with 60'
concrete apron

Divisible



NorthAuburnLogistics.com



Contact

Matt Wood, SIOR

206.248.7306

mwood@kiddermathews.com

Tony Miltenberger, SIOR

206.248.7307

tonym@kiddermathews.com

Todd Clarke

253.722.1422

tclarke@kiddermathews.com

Owned by

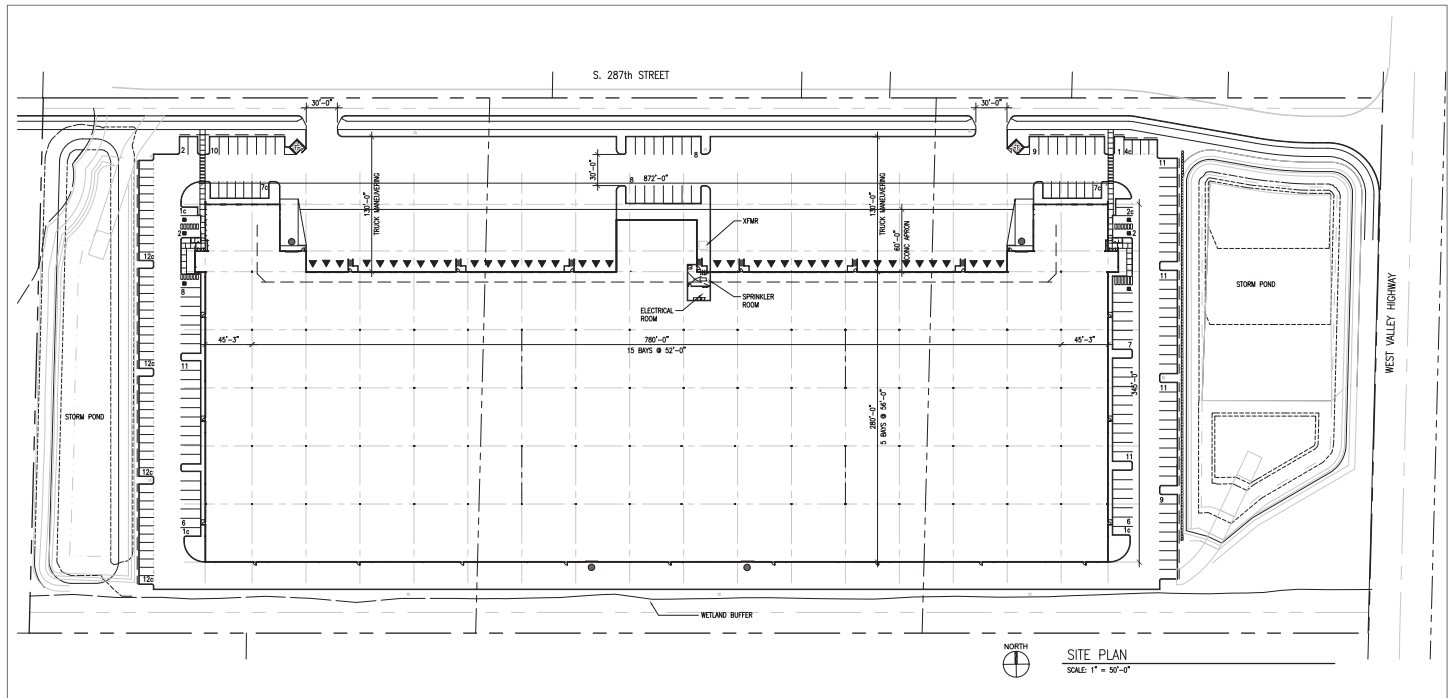


Developed by



North Auburn Logistics

Site Plan



I-5 Freeway Access



DRIVE TIMES

	Miles	Minutes
Port of Seattle	20	30
Port of Tacoma	12.3	22
Seattle	21	35
Bellevue	21	40
Tacoma	17	25

Contact

Matt Wood, SIOR
206.248.7306
mwood@kiddermathews.com

Tony Miltenberger, SIOR
206.248.7307
tonym@kiddermathews.com

Todd Clarke
253.722.1422
tclarke@kiddermathews.com