



Medinah Woods
CORPORATE ENTER

**FULL BUILDING OPPORTUNITY FOR LEASE (DIVISIBLE)
6 PER 1000 PARKING AVAILABLE**



LAKE ST. & 355 INTERCHANGE

3 STORIES | 70,863SF



**BEAUTIFUL
SCENIC
SETTING**



**ENCLOSED
EXECUTIVE
PARKING**



**WALKING/
RUNNING TRAILS
THROUGHOUT**

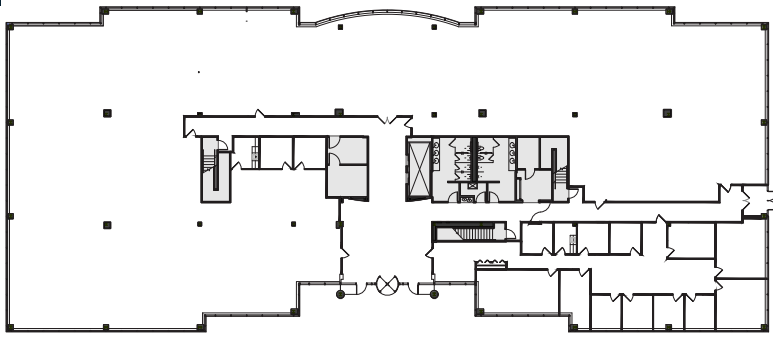


**HIGH-END
LOBBY
FINISHES**

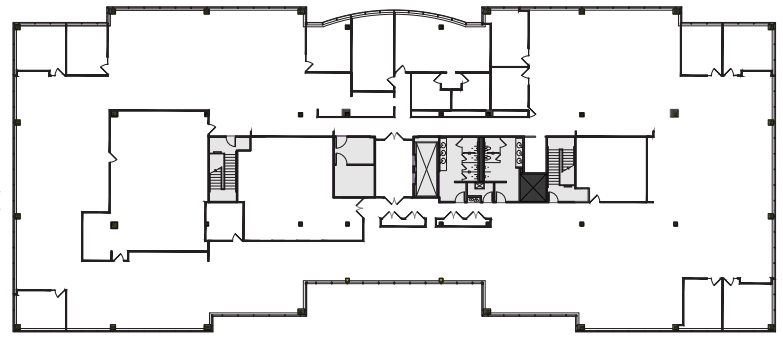


**PICTURESQUE
WINDOW
LINE**

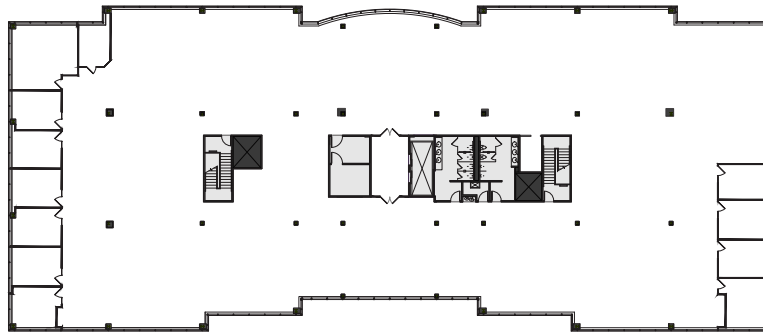
GREAT VIEWS. CONVENIENT ACCESS.



FIRST FLOOR AVAILABLE
21,604 RSF

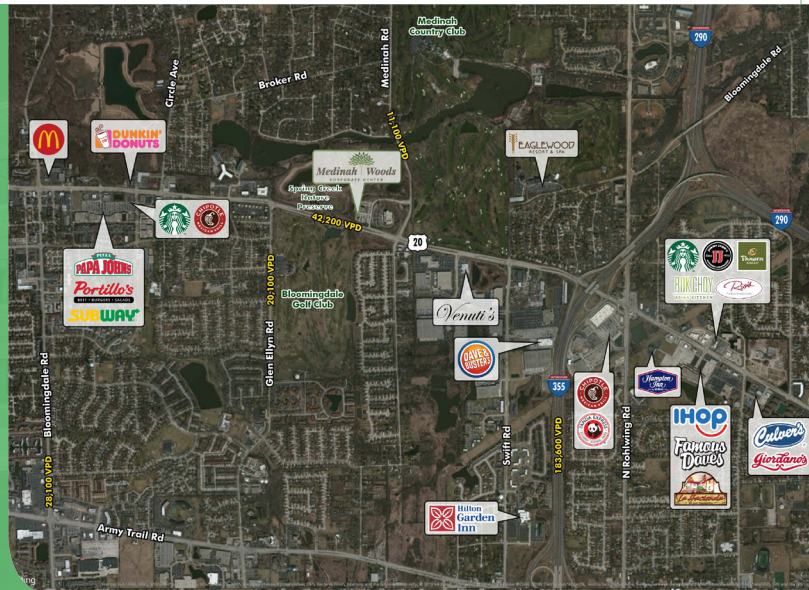


SECOND FLOOR AVAILABLE
24,618 RSF



THIRD FLOOR AVAILABLE
24,641 RSF

- GREAT VIEWS OF THE SURROUNDING NATURE PRESERVE, INCLUDING MEDINAH COUNTRY CLUB
- CONVENIENT TOLLWAY ACCESS TO O'HARE
- NEARBY METRA STATION
- SURROUNDED BY RESTAURANT AND HOTEL AMENITIES
- 6 PER 1000 PARKING
- 24 FULLY ENCLOSED PARKING SPACES
- JOGGING TRAILS AND NATURAL WOODED SURROUNDING
- TENANT PATIO IN WOODED SETTING
- CONVENIENT TOLLWAY ACCESS TO I-355 AND I-290



MARK C. SMITH
+1 847 706 4916
mark.smith@cbre.com

PETE ADAMO
+1 630 573 7053
peter.adamo@cbre.com

TARA TORBIK
+1 630 573 7822
tara.torbik@cbre.com

CBRE

© 2019 CBRE, Inc. All rights reserved. This information has been obtained from sources believed reliable, but has not been verified for accuracy or completeness. Any projections, opinions, or estimates are subject to uncertainty. The information may not represent the current or future performance of the property. You and your advisors should conduct a careful, independent investigation of the property and verify all information. Any reliance on this information is solely at your own risk. CBRE and the CBRE logo are service marks of CBRE, Inc. and/or its affiliated or related companies in the United States and other countries. All other marks displayed on this document are the property of their respective owners. Photos herein are the property of their respective owners and use of these images without the express written consent of the owner is prohibited. PMStudio_June2019