

Lease Rate: \$ 4,900 plus sales tax



10850 NW 21st Street #170, Doral, FL 33172

Property Features :

- 4,000 +/- sq. ft. total
- 2,400 +/- sq. ft. warehouse
- 1,600 +/- sq. ft. office
- 3 restrooms (two on second floor)
- 2 Dock Positon
- Kitchen
- Patrolling Security on nights and weekends
- Kitchen
- Patrolling Security on nights and weekends
- Chairlift

Offered Exclusively By:

Reshma Parvani, SIOR

Broker

M: 305-342-9576

rparvani@parvanigroup.com

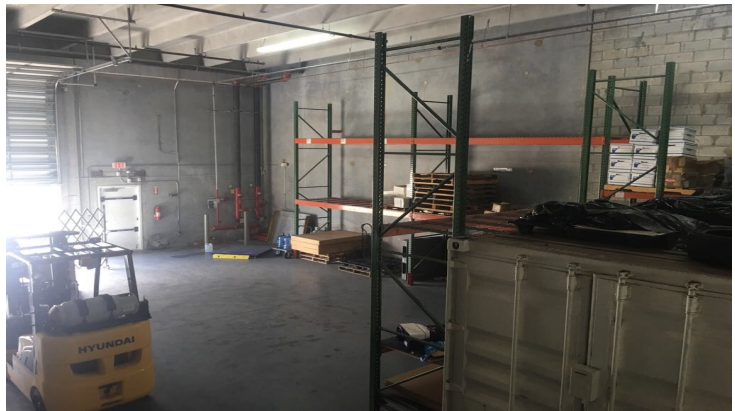
Vishal Parvani

Associate

M:786-205-5579

vparvani@parvanigroup.com

Photos



Offered Exclusively By:

Reshma Parvani, SIOR

Broker

M: 305-342-9576

rparvani@parvanigroup.com

Vishal Parvani

Associate

M: 786-205-5579

vparvani@parvanigroup.com



10850 NW 21st Street, #110 Doral, FL

O: 305-477-2084