

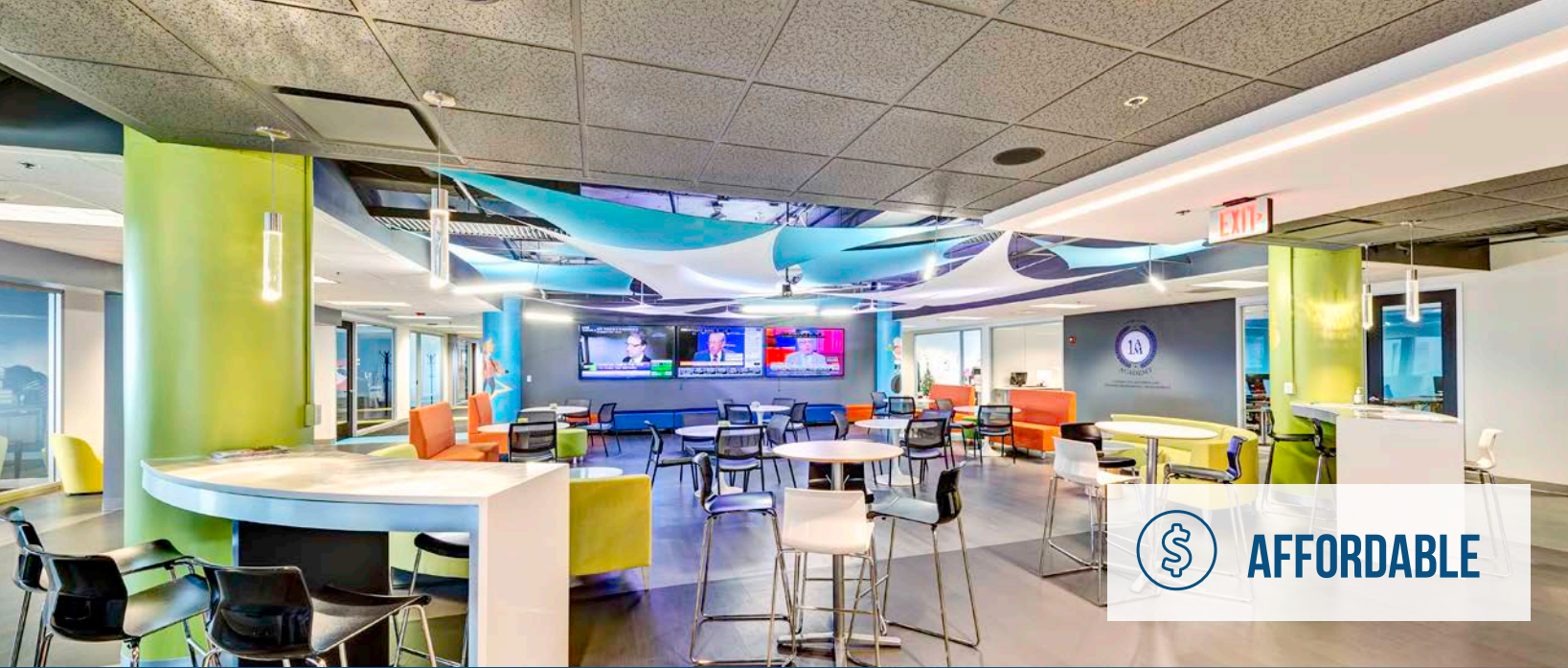
EXECUTIVE
TOWERS
WEST



EXECUTIVE
TOWERS
WEST
1400
State Farm™
LEASING INFORMATION: 773.957.1410

FOR LEASE

CBRE



AFFORDABLE

— □ **VALUE**



FLEXIBLE FLOOR PLATES

— □ **EFFICIENCY**

- EXECUTIVE
- TOWERS
- WEST

CENTER OF THE MARKET



DIRECT ACCESS TO TOLLWAYS

INTERSECTION OF I-88 AND I-355 AT BUTTERFIELD RD



LOCATION

- EXECUTIVE
- TOWERS
- WEST

DOWNTOWN CHICAGO

OAK BROOK

DOWNERS GROVE



EXECUTIVE
TOWERS
WEST III

EXECUTIVE
TOWERS
WEST II

EXECUTIVE
TOWERS
WEST I

EXECUTIVE
TOWERS
WEST



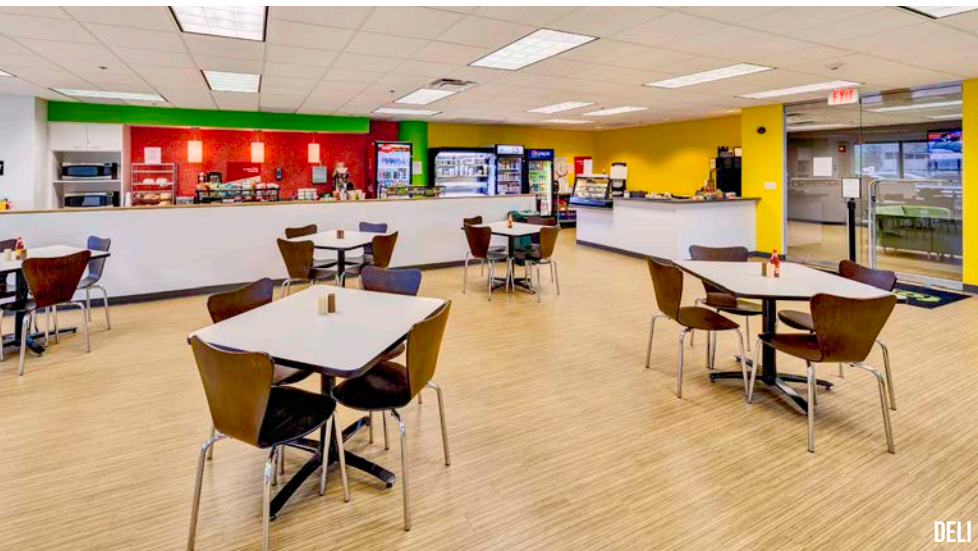
FITNESS CENTER



STRUCTURED AND EXECUTIVE PARKING



CONFERENCE CENTER



DELI



TENANT LOUNGE

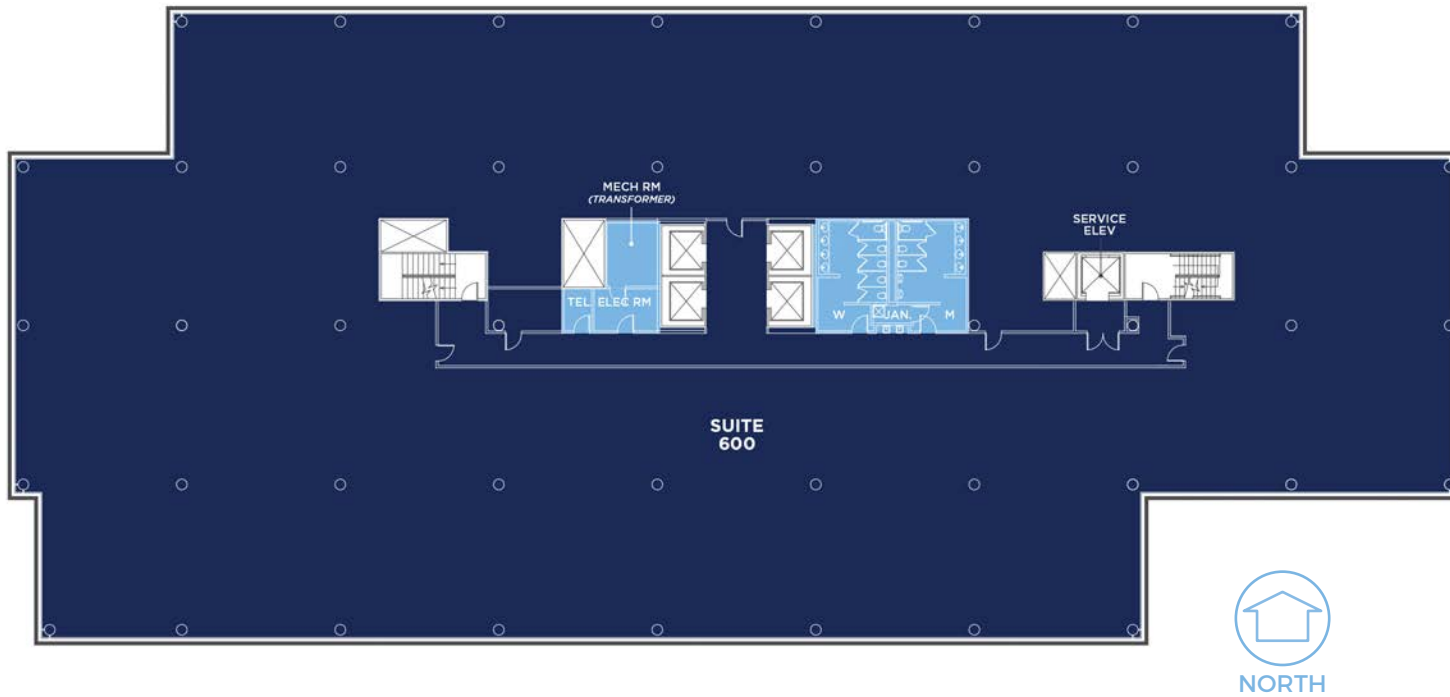
EVERY AMENITY ON SITE, INCLUDING FULL SERVICE MARRIOTT AND HEALTH CLUB NEXT DOOR. IMMENSE OTHER EATING AND SHOPPING OPPORTUNITIES WITHIN A MILE.

AMENITIES





- EXECUTIVE ■
- TOWERS ■
- WEST III ■



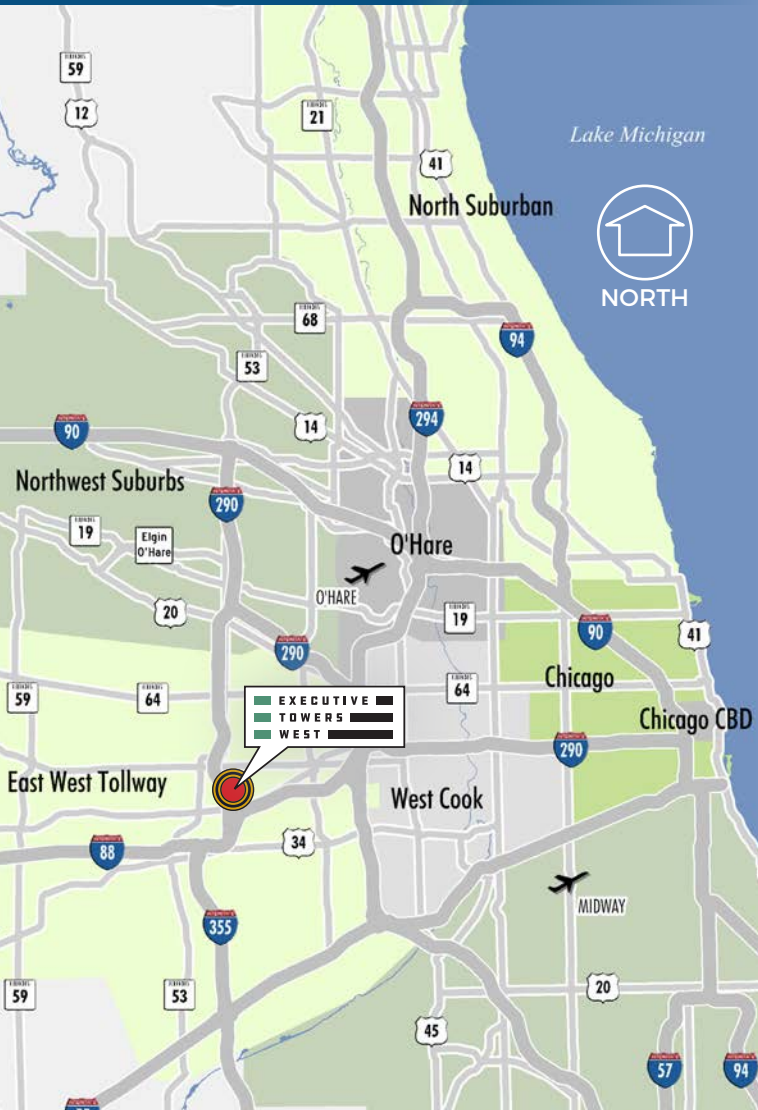
TYPICAL FLOOR PLATE

(EXECUTIVE TOWER WEST III)

- EXECUTIVE ■
- TOWERS ■
- WEST ■



MAP



FOR MORE
INFORMATION,
CONTACT:

PETER ADAMO
+1 630 573 7053
peter.adamo@cbre.com

BILL ELWOOD
+1 630 573 7033
william.elwood@cbre.com

CBRE

EXECUTIVE
TOWERS
WEST

© 2018 CBRE, Inc. All rights reserved. This information has been obtained from sources believed reliable, but has not been verified for accuracy or completeness. Any projections, opinions, or estimates are subject to uncertainty. The information may not represent the current or future performance of the property. You and your advisors should conduct a careful, independent investigation of the property and verify all information. Any reliance on this information is solely at your own risk. CBRE and the CBRE logo are service marks of CBRE, Inc. and/or its affiliated or related companies in the United States and other countries. All other marks displayed on this document are the property of their respective owners. Photos herein are the property of their respective owners and use of these images without the express written consent of the owner is prohibited. PMStudio_December2018