



retail SPECIALISTS




FOR SALE

FORMER KRISPY KREME AVAILABLE

1315 SHACKLEFORD ROAD, LITTLE ROCK, AR 72211



- 3,544 SF building on 0.67 (29,185 SF) acre
- Former Krispy Kreme available for sale
- Ideally located near hospital/medical centers and national hotel chains as well as I-430
- Call for pricing and more information

 POPULATION	 MED HH INCOME	 TRAFFIC
134,277	\$54,958	25,000

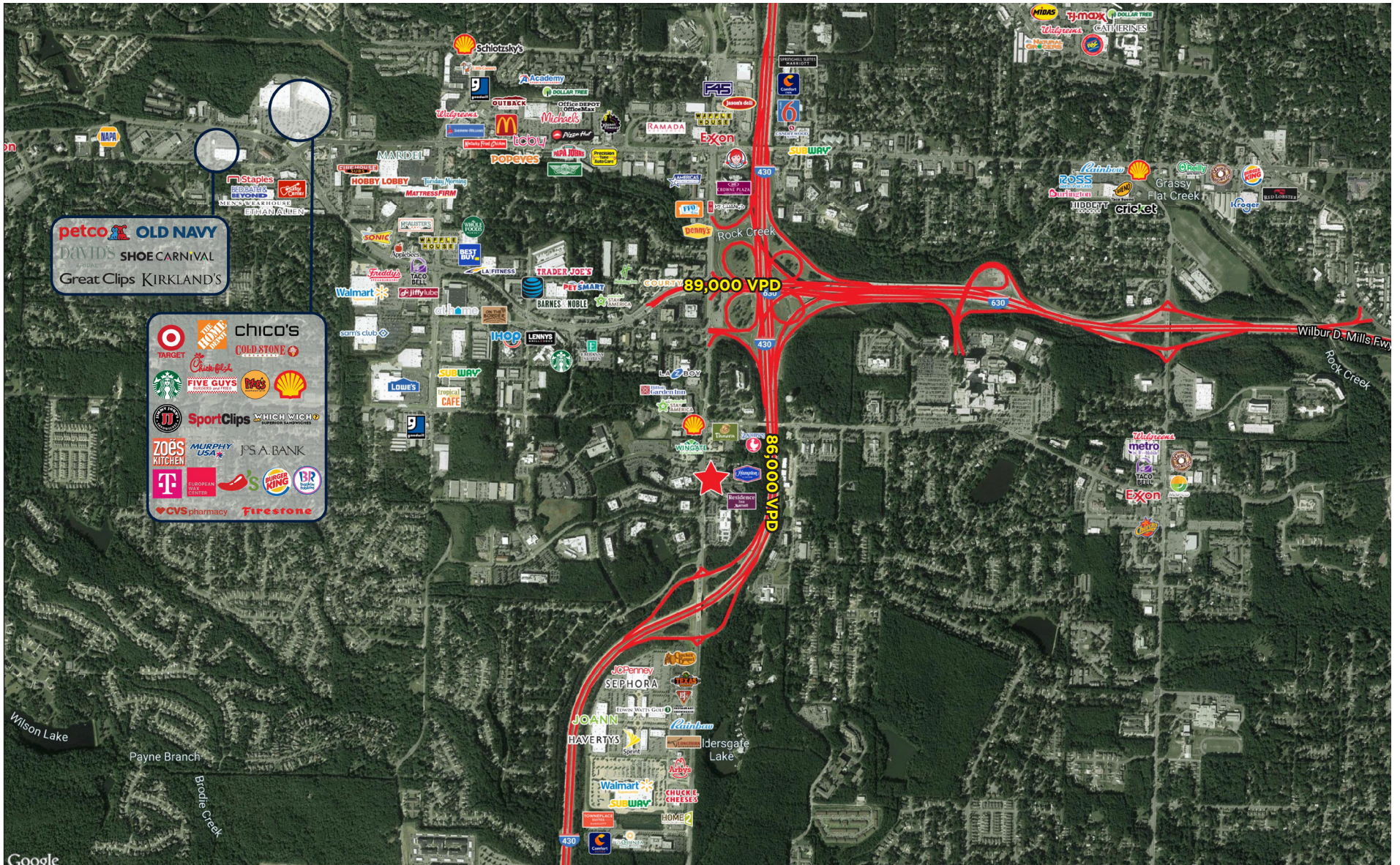
In Cooperation with
Newmark
Moses Tucker Partners

805 S WALTON, SUITE 690
BENTONVILLE, AR 72712

*5 MILE RADIUS | SiteWise Pro | ALDOT

JOE STRAUSS, CCIM | 205.490.2831 | JSTRAUSS@RETAILSPECIALISTS.COM • CLAY CRAFT | 205.588.6568 | CCRAFT@RETAILSPECIALISTS.COM

RETAILSPECIALISTS.COM | BIRMINGHAM ATLANTA



JOE STRAUSS, CCIM | 205.490.2831 | JSTRAUSS@RETAILSPECIALISTS.COM • **CLAY CRAFT** | 205.588.6568 | CCRAFT@RETAILSPECIALISTS.COM
 RETAILSPECIALISTS.COM | BIRMINGHAM • ATLANTA