



FOR LEASE | OFFICE BUILDING
±42,395 RSF AVAILABLE

PROPERTY FEATURES

- Parking Ratio: 6.0/1,000 SF
- Newly Finished Common Area Lobbies
- New Building Entryways
- Recently Added Building Windows
- Flexible floorplans
- High end built-to-suit with offices, conference rooms, lunch area, computer room, restrooms and other amenities.
- Located within Mather Commerce Center
- Mather Airport nearby – offers a full-service fixed base operator
- Outside the 500-year flood plain
- Redundant power and communication infrastructure including back up generator
- Immediate access to Hwy 50 at Mather Field Road
- Restaurants, hotels and retail support services in close proximity

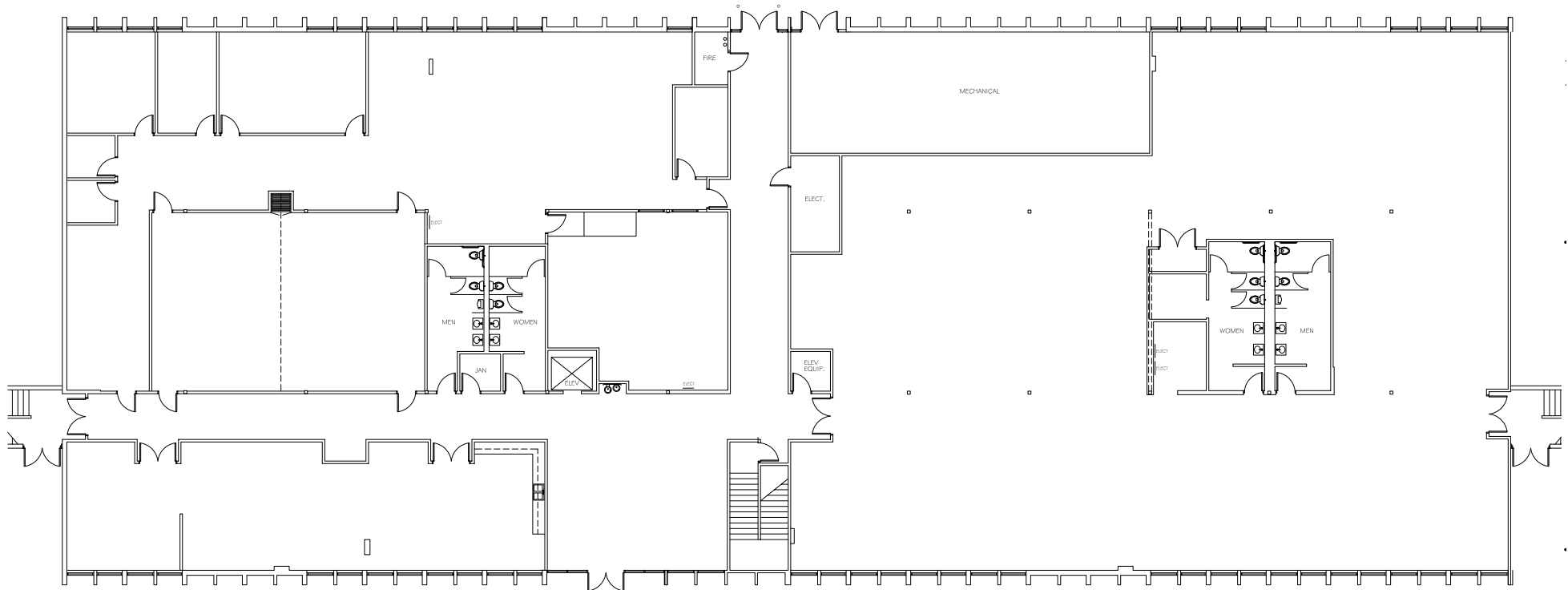
FOR MORE INFO, PLEASE CONTACT:

KEVIN PARTINGTON
Executive Director
+1 916 288 4807
kevin.partington@cushwake.com
LIC #01199010

SEAN MULLEN
Director
+1 916 288 4811
sean.mullen@cushwake.com
LIC #01845406

400 Capitol Mall Suite 1800
Sacramento, CA 95814
+1 916 288 4800
cushmanwakefield.com

Floor Plan / Ground Floor



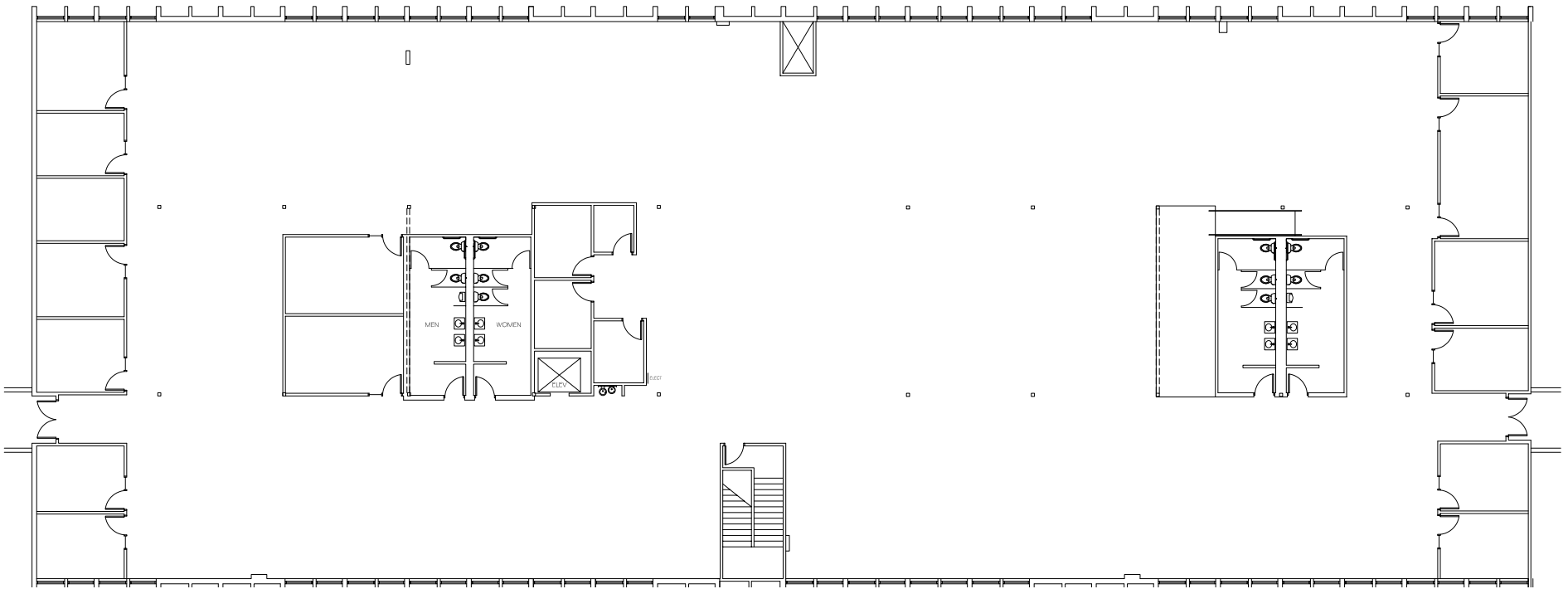
Kevin Partington
Executive Director
+1 916 288 4807
kevin.partington@cushwake.com
LIC #01199010

Sean Mullen
Director
+1 916 288 4811
sean.mullen@cushwake.com
LIC #01845406

Owned & Professionally
Managed by:



Floor Plan / Second Floor



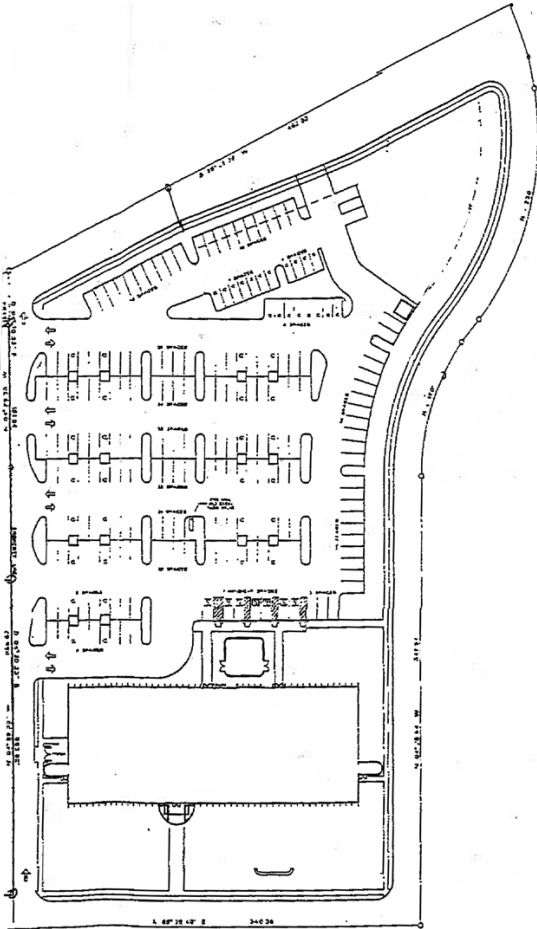
Kevin Partington
Executive Director
+1 916 288 4807
kevin.partington@cushwake.com
LIC #01199010

Sean Mullen
Director
+1 916 288 4811
sean.mullen@cushwake.com
LIC #01845406

Owned & Professionally
Managed by:



PROPERTY SITE PLAN



PROPERTY AERIAL



Kevin Partington
Executive Director
+1 916 288 4807
kevin.partington@cushwake.com
LIC #01199010

Sean Mullen
Director
+1 916 288 4811
sean.mullen@cushwake.com
LIC #01845406

Owned & Professionally
Managed by:

