



# 700 East Main Street Ventura • California

Contact | Call for a Tour: Jeff Becker 805.653-6794 ext. 201 | [jbecker@beckergrp.com](mailto:jbecker@beckergrp.com)

*Iconic Office/Retail Opportunity in Heart of Downtown*



broker  
alert

Real Estate Investments | Property Management

web | [www.beckergrp.com](http://www.beckergrp.com) tele | 805.653.6794 fax | 805.653.6795 street | 40 South Ash Street Ventura, CA 93001 mail | PO Box 23277, Ventura, CA 93002 license | 01213236

The information above has been obtained from sources believed reliable. While we do not doubt it's accuracy, we have not verified it and make no guarantee, warranty or representation about it. It is your responsibility to independently confirm it's accuracy and completeness. Any projections, opinions, assumption or estimates used are for example only and do not represent the current or future performance of the property. The value of this transaction to you depends on tax and other factors which should be evaluated by your tax, financial and legal advisors. You and your advisors should conduct a careful independent investigation of the property to determine to your satisfaction the stability of the property for your needs.





# Iconic Office/Retail Building Opportunity For SALE

Contact: Jeff Becker 805.653-6794 ext. 201 | jbecker@beckergroup.com

700 East Main Street  
Ventura • California

**\$1,975,000**

- Iconic Corner-Situated Multi-Level 1929 Classical/Colonial Revival Office/Retail Building in Historic Downtown
- Approx. 6,984 sf / 7,800 sf lot, 2 Suite Building [Upper 3000 sf/Lower 3984 sf]
- Available for Occupancy [lower]
- Integrate into the Vibrant Downtown Live/Work Community and Join corner neighbors Fluid State, Ventiki with close proximity of the New Boutique Hotel San Buena Under Construction.
- Tenant is Month-to-Month Tenancy



*Located in Historic Downtown – home to many Restaurants, Shops, Theater, Beaches, Pier, City Hall, State Fairgrounds, San Buenaventura Mission, Metrolink, Parks, Post Office + More*

**Real Estate Investments | Property Management**

web | [www.beckergroup.com](http://www.beckergroup.com) tele | 805.653.6794 fax | 805.653.6795 street | 40 South Ash Street Ventura, CA 93001 mail | PO Box 23277, Ventura, CA 93002 license | 01213236

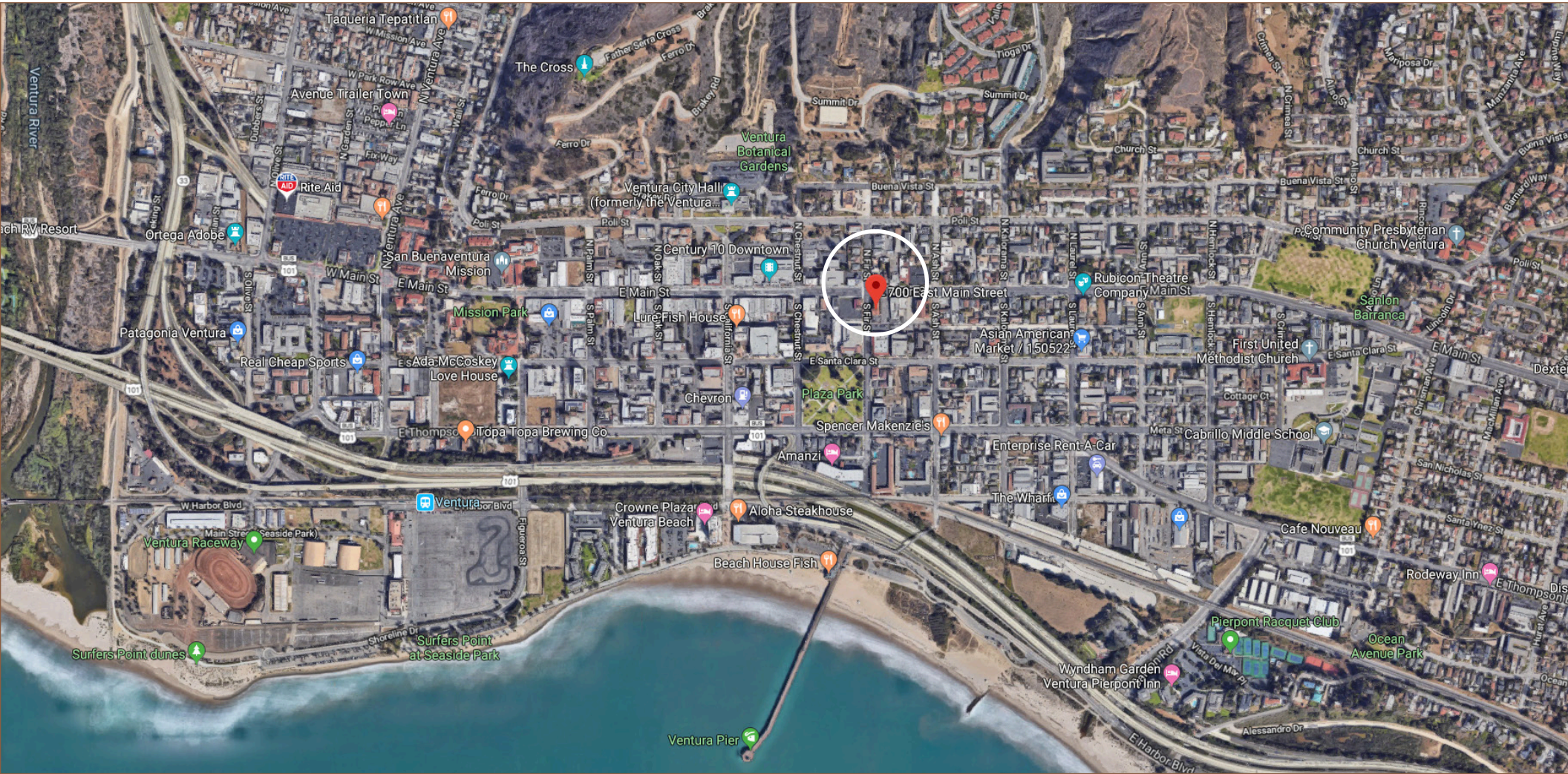
The information above has been obtained from sources believed reliable. While we do not doubt it's accuracy, we have not verified it and make no guarantee, warranty or representation about it. It is your responsibility to independently confirm it's accuracy and completeness. Any projections, opinions, assumption or estimates used are for example only and do not represent the current or future performance of the property. The value of this transaction to you depends on tax and other factors which should be evaluated by your tax, financial and legal advisors. You and your advisors should conduct a careful independent investigation of the property to determine to your satisfaction the stability of the property for your needs.





# 700 East Main Street

aerial map



## Real Estate Investments | Property Management

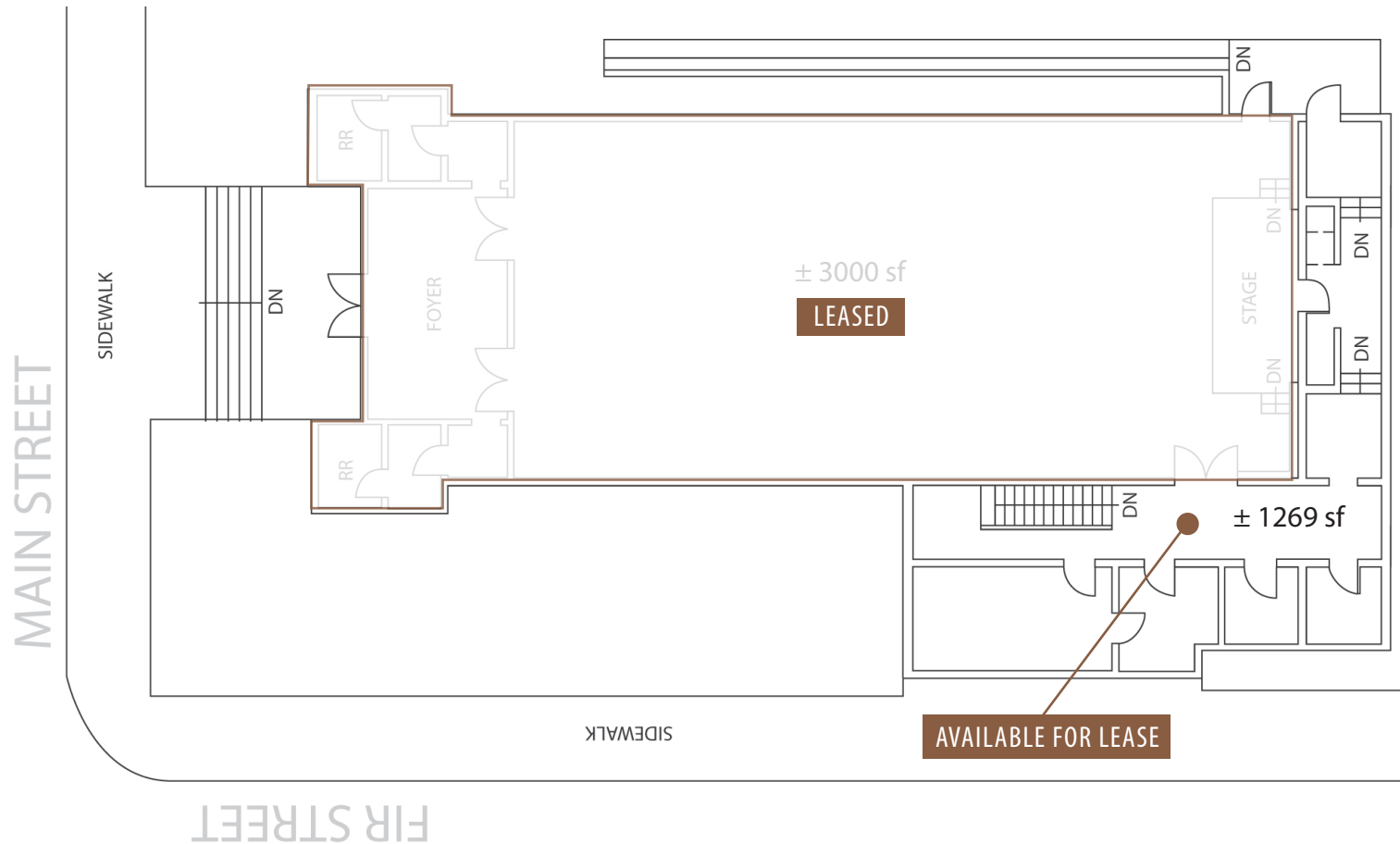
web | [www.beckergroup.com](http://www.beckergroup.com)    tele | 805.653.6794    fax | 805.653.6795    street | 40 South Ash Street Ventura, CA 93001    mail | PO Box 23277, Ventura, CA 93002    license | 01213236

The information above has been obtained from sources believed reliable. While we do not doubt it's accuracy, we have not verified it and make no guarantee, warranty or representation about it. It is your responsibility to independently confirm it's accuracy and completeness. Any projections, opinions, assumption or estimates used are for example only and do not represent the current or future performance of the property. The value of this transaction to you depends on tax and other factors which should be evaluated by your tax, financial and legal advisors. You and your advisors should conduct a careful independent investigation of the property to determine to your satisfaction the stability of the property for your needs.



# 700 East Main Street

upper floorplan – approx useable 4269 sf

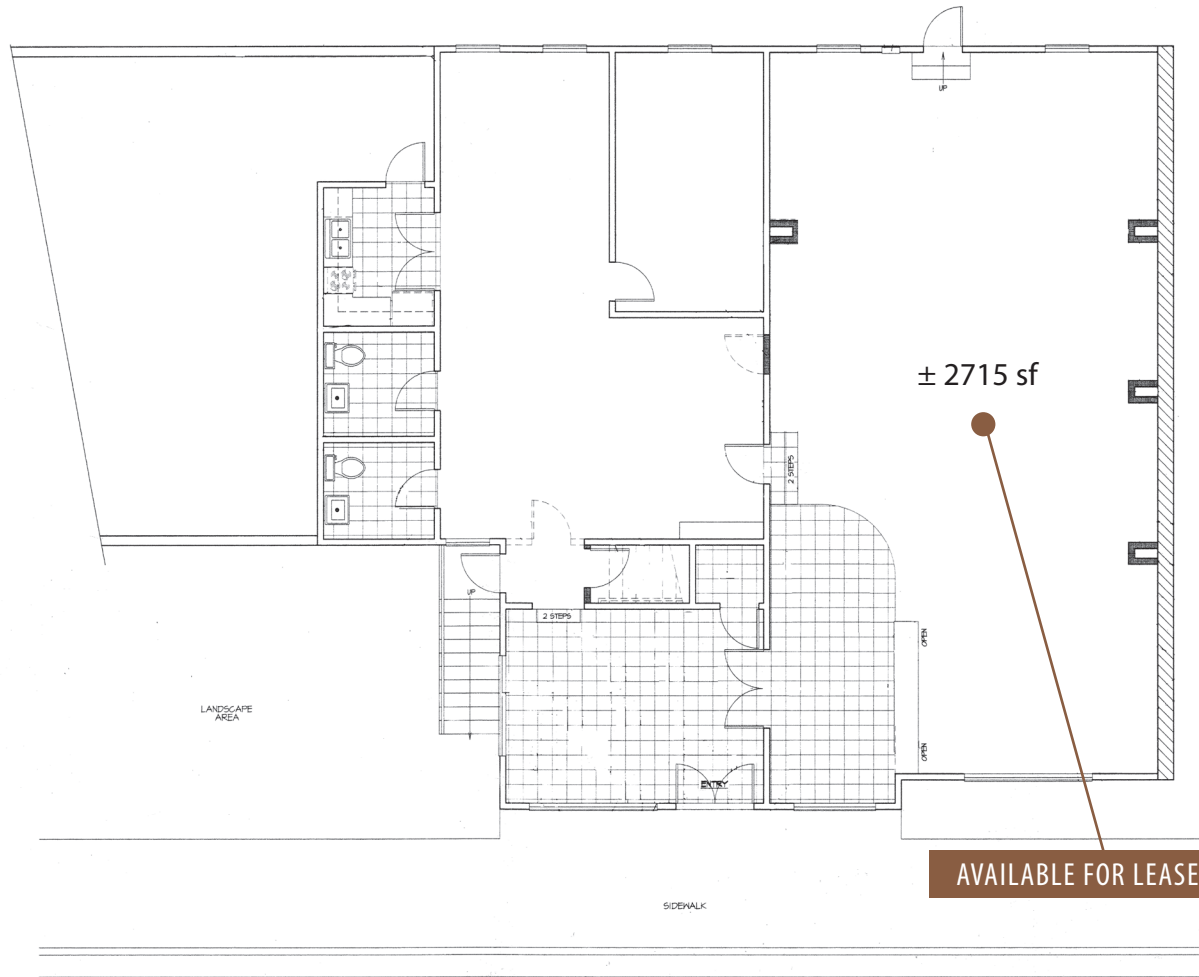


## Real Estate Investments | Property Management

web | [www.beckergrp.com](http://www.beckergrp.com) tele | 805.653.6794 fax | 805.653.6795 street | 40 South Ash Street Ventura, CA 93001 mail | PO Box 23277, Ventura, CA 93002 license | 01213236

# 700 East Main Street

lower floorplan— approx useable 2715 sf



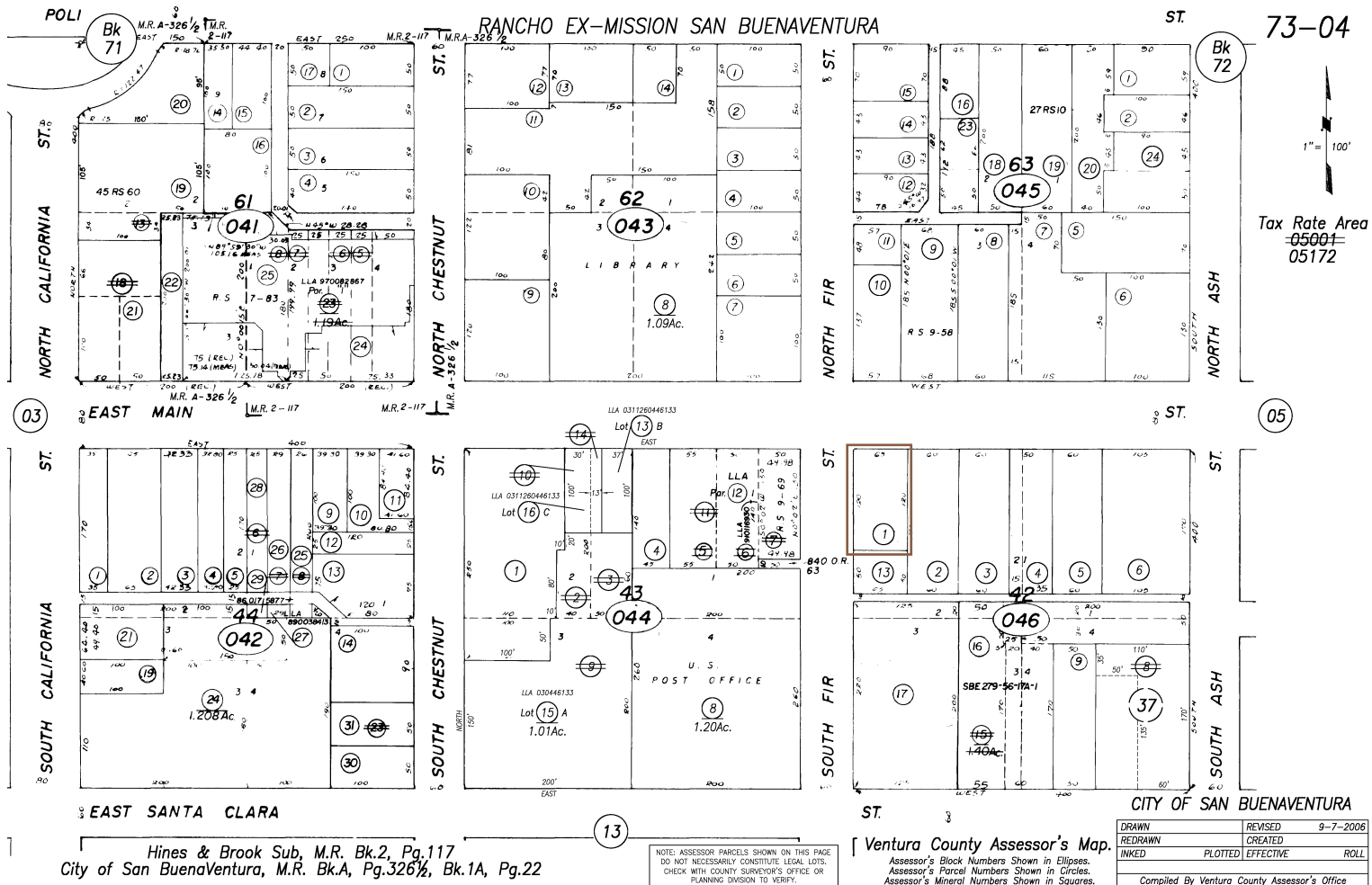
**LOWER LEVEL**  
SCALE: 1/4" = 1'-0" APPROX. 2,715 S.F.  
0' 1' 2' 4' 8'

## Real Estate Investments | Property Management

web | [www.beckergrp.com](http://www.beckergrp.com) tele | 805.653.6794 fax | 805.653.6795 street | 40 South Ash Street Ventura, CA 93001 mail | PO Box 23277, Ventura, CA 93002 license | 01213236

# 700 East Main Street

assessor's map



DATE	REFERENCE DOC.	Code	Substitution	Description	VOID A.P.N.(s)	RESIDUAL A.P.N.(s)	NEW A.P.N.(s)
01-01-07	006038-016147			Genl. Plan	073-0-310-015, 016-105		073-0-310-015, 016-105

## Real Estate Investments | Property Management

web | www.beckergrp.com tele | 805.653.6794 fax | 805.653.6795 street | 40 South Ash Street Ventura, CA 93001 mail | PO Box 23277, Ventura, CA 93002 license | 01213236



# 700 East Main Street

east side of building



stained glass detail

## Real Estate Investments | Property Management

web | [www.beckergrp.com](http://www.beckergrp.com) tele | 805.653.6794 fax | 805.653.6795 street | 40 South Ash Street Ventura, CA 93001 mail | PO Box 23277, Ventura, CA 93002 license | 01213236

The information above has been obtained from sources believed reliable. While we do not doubt it's accuracy, we have not verified it and make no guarantee, warranty or representation about it. It is your responsibility to independently confirm it's accuracy and completeness. Any projections, opinions, assumption or estimates used are for example only and do not represent the current or future performance of the property. The value of this transaction to you depends on tax and other factors which should be evaluated by your tax, financial and legal advisors. You and your advisors should conduct a careful independent investigation of the property to determine to your satisfaction the stability of the property for your needs.





## Real Estate Investments | Property Management

web | [www.beckergrp.com](http://www.beckergrp.com) tele | 805.653.6794 fax | 805.653.6795 street | 40 South Ash Street Ventura, CA 93001 mail | PO Box 23277, Ventura, CA 93002 license | 01213236





# 700 East Main Street

second suite images



## Real Estate Investments | Property Management

web | [www.beckergroup.com](http://www.beckergroup.com) tele | 805.653.6794 fax | 805.653.6795 street | 40 South Ash Street Ventura, CA 93001 mail | PO Box 23277, Ventura, CA 93002 license | 01213236

The information above has been obtained from sources believed reliable. While we do not doubt it's accuracy, we have not verified it and make no guarantee, warranty or representation about it. It is your responsibility to independently confirm it's accuracy and completeness. Any projections, opinions, assumption or estimates used are for example only and do not represent the current or future performance of the property. The value of this transaction to you depends on tax and other factors which should be evaluated by your tax, financial and legal advisors. You and your advisors should conduct a careful independent investigation of the property to determine to your satisfaction the stability of the property for your needs.





# 700 East Main Street

second suite images



## Real Estate Investments | Property Management

web | [www.beckergrp.com](http://www.beckergrp.com) tele | 805.653.6794 fax | 805.653.6795 street | 40 South Ash Street Ventura, CA 93001 mail | PO Box 23277, Ventura, CA 93002 license | 01213236

The information above has been obtained from sources believed reliable. While we do not doubt it's accuracy, we have not verified it and make no guarantee, warranty or representation about it. It is your responsibility to independently confirm it's accuracy and completeness. Any projections, opinions, assumption or estimates used are for example only and do not represent the current or future performance of the property. The value of this transaction to you depends on tax and other factors which should be evaluated by your tax, financial and legal advisors. You and your advisors should conduct a careful independent investigation of the property to determine to your satisfaction the stability of the property for your needs.