



N53W24794 S. Corporate Cir. Sussex, WI

Building Size:	±24,952 SF
Available SF:	±3,136 SF - 14,280 SF
Lease Rate:	\$4.50/SF, NNN - Warehouse \$8.50/SF, NNN - Office

Parcel & Tax Information

Parcel Size:	±2.823 Acres
Tax Key #:	SUXV 0278999008
Taxes - 2016:	\$34,349.72

Property Features

- Located within the Sussex Corporate Center
- Flexible floor plan
- Fully air conditioned

For more information

Mitchell Starczynski

414 395 4692

mks@mlgcommercial.com

Curt Pitzen

414 395 4688

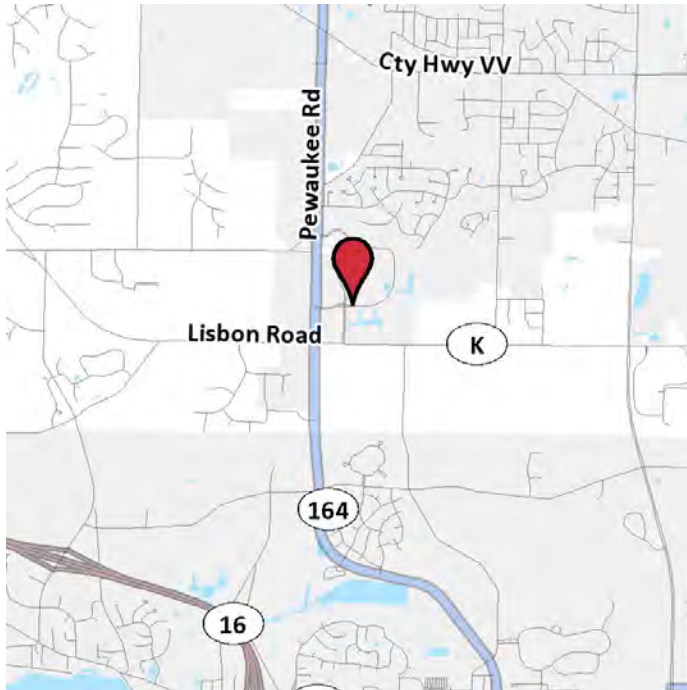
cpitzen@mlgcommercial.com

Information shown herein was provided by the Seller/Lessor and/or other third parties and has not been verified by the broker unless otherwise indicated.

757 North Broadway Street, Suite 700
Milwaukee, WI 53202
414 347 9400
mlgcommercial.com
Offices in Milwaukee and Madison, WI

Building Features

Construction:	Masonry Block
Year Built:	1996
Sprinkler:	Yes
HVAC:	Fully Air Conditioned
Power:	3-Phase, 240V (TBV)
Zoning:	BP-1
Parking:	Ample
Utilities:	Municipal Sewer & Water



Unit A Features

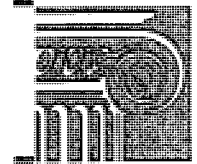
Size:	±8,008 SF
Warehouse SF:	±3,000 SF
Office SF:	±5,008 SF on Two Floors
Ceiling Height:	±19'
Drive In Doors:	1 - 12'x14'
Lighting:	Fluorescent
Floor Drain:	Yes

Unit B Features

Size:	±3,136 SF (All Warehouse)
Ceiling Height:	±19'
Drive In Doors:	1 - 8'x10'
Lighting:	Metal Halide

Unit C Features

Size:	±3,136 SF (All Warehouse)
Ceiling Height:	±19'
Drive In Doors:	1 - 8'x10'
Lighting:	Metal Halide



EPPSTEIN UHEN
ARCHITECTS

240 EAST MICHIGAN STREET
SUITE 700 • P.O. BOX 8070
MILWAUKEE, WISCONSIN 53202-0708
414-371-5200 • FAX: 414-371-7794

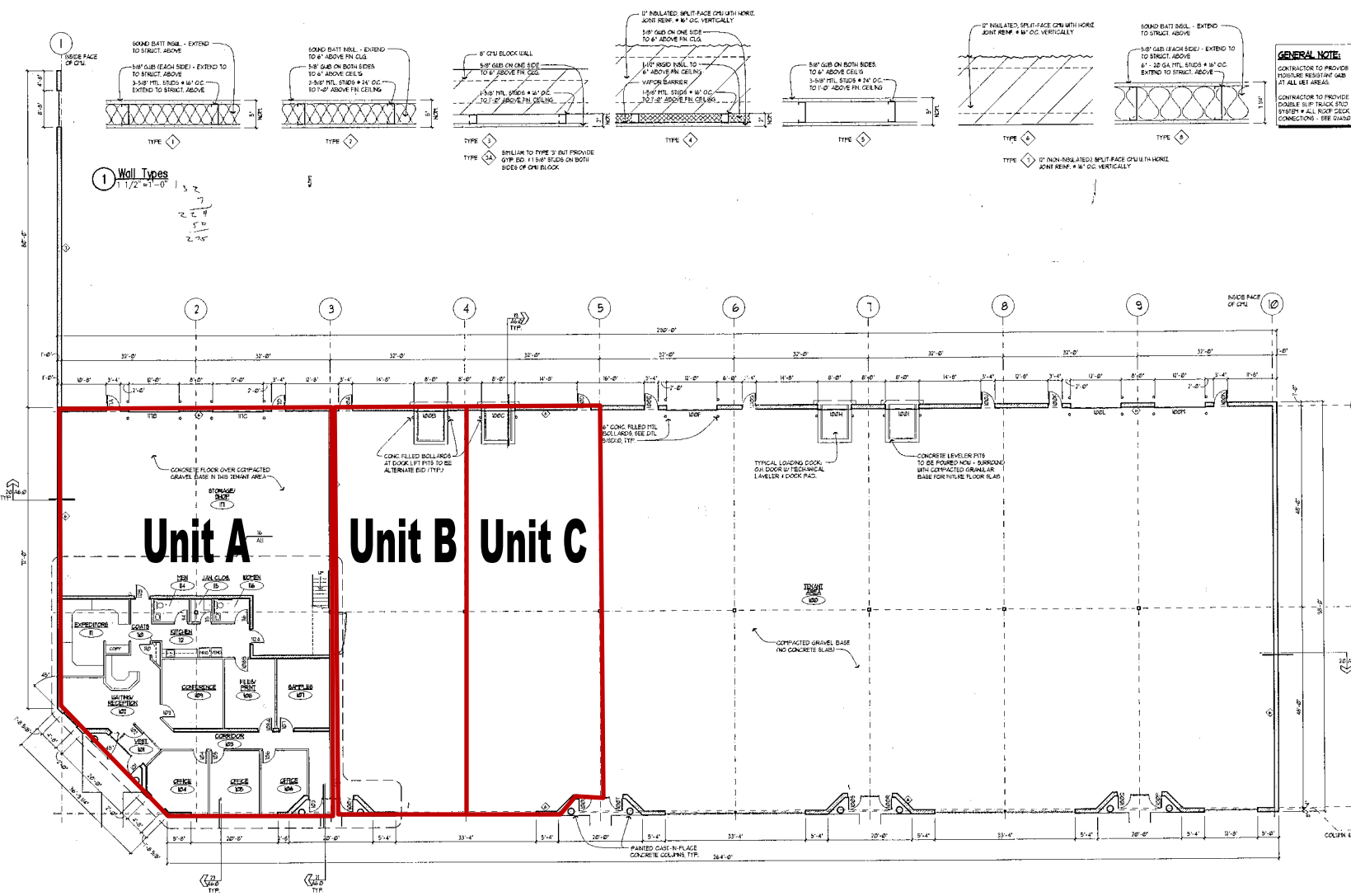
Project
DEMLA SERVICE
CENTER
SUSSEX, WI

Sheet Title
FLOOR PLAN
WALLTYPES

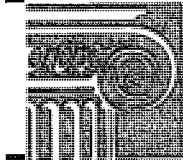
Revisions		
Rev	Date	By
1	FOR CONSTRUCTION 10-23-95	BSH

Project Architect PWP
Drawn By BSH, SJS
Project No. 2-95072-01
Date SEPTEMBER 13, 1995

Sheet No.
A1.0



19 Floor Plan
3/32" = 1'-0"



EPSTEIN UHEN
ARCHITECTS

210 EAST MICHIGAN STREET
SUITE 100 • P.O. BOX 89758
MILWAUKEE, WISCONSIN 53202-0758
414-271-5300 • FAX 271-7794

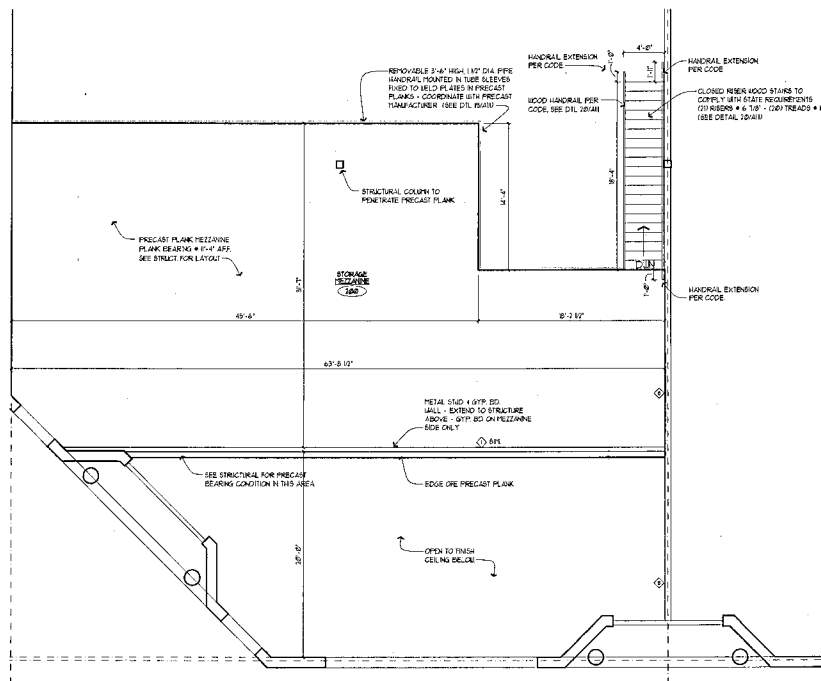
Project
**DEMLANG SERVICE
CENTER
SUSSEX, WI**

Sheet Title
**ENLARGED
FLOOR PLAN
& DETAILS**

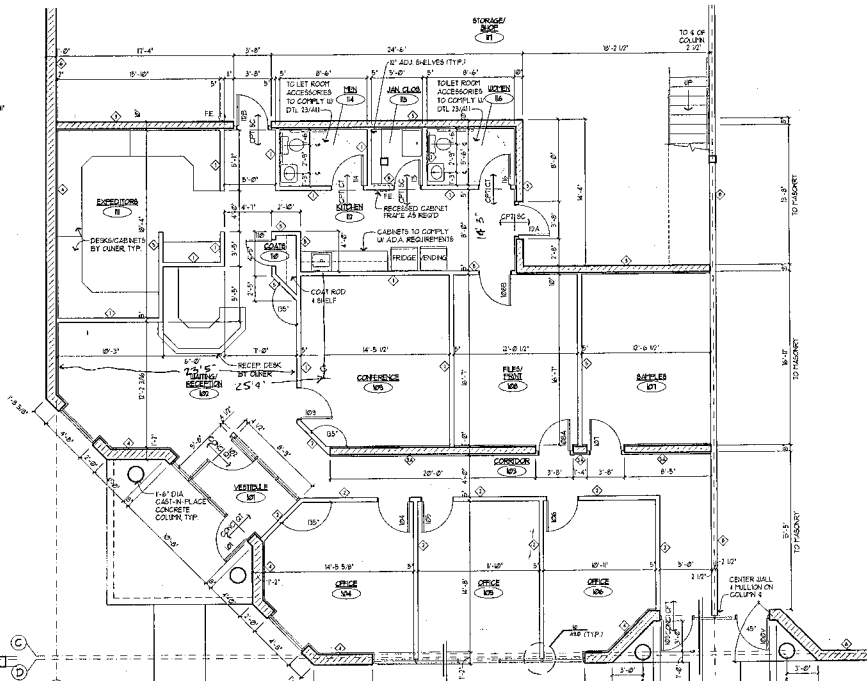
Revisions
Rev. Date By
FOR CONSTRUCTION 10-23-95 BSH

Project Architect PWP
Drawn By BSH, SJS
Project No. 2-95072-01
Date SEPTEMBER 13, 1995
Sheet No.

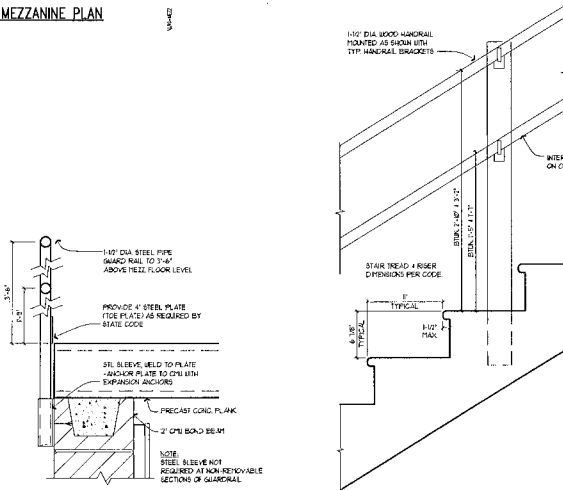
A1.1



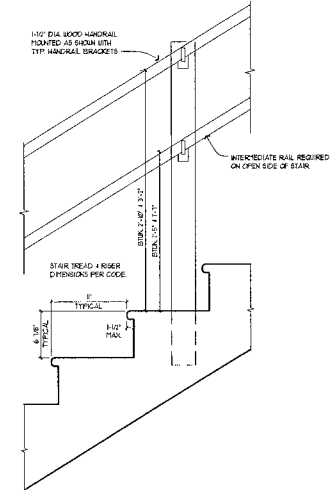
ENLARGED MEZZANINE PLAN
3/16\"/>



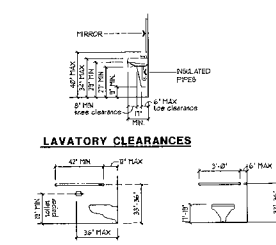
ENLARGED OFFICE PLAN
3/16\"/>



Removable Railing Detail
1 1/2\"/>



Stair Section Detail
1 1/2\"/>



LAVATORY CLEARANCES
SIDE ELEVATION FRONT ELEVATION
Fixture Mounting Heights (ADA Min.)
1/4\"/>



NAI MLG Commercial

COMMERCIAL REAL ESTATE SERVICES WORLDWIDE

Information shown herein was provided by the Seller/Lessor and/or other third parties and has not been verified by the broker unless otherwise indicated.

757 North Broadway Street, Suite 700
Milwaukee, WI 53202
414 347 9400
mlgcommercial.com
Offices in Milwaukee and Madison, WI

State of Wisconsin Broker Disclosure to Non-Residential Customers

Prior to negotiating on your behalf the brokerage firm, or an agent associated with the firm, must provide you the following disclosure statement.

BROKER DISCLOSURE TO CUSTOMERS

You are the customer of the brokerage firm (hereinafter Firm). The Firm is either an agent of another party in the transaction or a subagent of another firm that is the agent of another party in the transaction. A broker or a salesperson acting on behalf of the Firm, may provide brokerage services to you. Whenever the Firm is providing brokerage services to you, the Firm and its brokers and salespersons (hereinafter Agents) owe you, the customer, the following duties:

- The duty to provide brokerage services to you fairly and honestly.
- The duty to exercise reasonable skill and care in providing brokerage services to you.
- The duty to provide you with accurate information about market conditions within a reasonable time if you request it, unless disclosure of the information is prohibited by law.
- The duty to disclose to you in writing certain Material Adverse Facts about a property, unless disclosure of the information is prohibited by law (see "Definition of Material Adverse Facts" below).
- The duty to protect your confidentiality. Unless the law requires it, the Firm and its Agents will not disclose your confidential information or the confidential information of other parties (see "Confidentiality Notice To Customers" below).
- The duty to safeguard trust funds and other property held by the Firm or its Agents.
- The duty, when negotiating, to present contract proposals in an objective and unbiased manner and disclose the advantages and disadvantages of the proposals.

Please review this information carefully. An agent of the Firm can answer your questions about brokerage services, but if you need legal advice, tax advice, or a professional home inspection, contact an attorney, tax advisor, or home inspector.

This disclosure is required by section 452.135 of the Wisconsin statutes and is for information only. It is a plain-language summary of a broker's duties to a customer under section 452.133 (1) of the Wisconsin statutes.

CONFIDENTIALITY NOTICE TO CUSTOMERS

The Firm and its Agents will keep confidential any information given to the Firm or its Agents in confidence, or any information obtained by the Firm or its Agents that a reasonable person would want to be kept confidential, unless the information must be disclosed by law or you authorize the Firm to disclose particular information. The Firm and its

Wisconsin law requires all real estate licensees to give the following information about brokerage services to prospective customers.

Agents shall continue to keep the information confidential after the Firm is no longer providing brokerage services to you.

The following information is required to be disclosed by law:
1. Material Adverse Facts, as defined in section 452.01 (5g) of the Wisconsin statutes (see "definition of material adverse facts" below).

2. Any facts known by the Firm or its Agents that contradict any information included in a written inspection report on the property or real estate that is the subject of the transaction. To ensure that the Firm and its Agents is aware of what specific information you consider confidential, you may list that information below or provide that information to the Firm or its Agents by other means. At a later time, you may also provide the Firm or its Agents with other information that you consider to be confidential.

CONFIDENTIAL INFORMATION: _____

NON-CONFIDENTIAL INFORMATION (The following information may be disclosed by the Firm and its Agents): __

(INSERT INFORMATION YOU AUTHORIZE TO BE DISCLOSED SUCH AS FINANCIAL QUALIFICATION INFORMATION)

SEX OFFENDER REGISTRY

Notice: You may obtain information about the sex offender registry and persons registered with the registry by contacting the Wisconsin Department of Corrections on the Internet at <http://www.doc.wi.gov/> or by phone at 608-240-5830.

DEFINITION OF MATERIAL ADVERSE FACTS

A "Material Adverse Fact" is defined in Wis. Stat. 452.01 (5g) as an adverse fact that a party indicates is of such significance, or that is generally recognized by a competent licensee as being of such significance to a reasonable party, that it affects or would affect the party's decision to enter into a contract or agreement concerning a transaction or affects or would affect the party's decision about the terms of such a contract or agreement.

An "Adverse Fact" is defined in Wis. Stat. 452.01 (1e) as a condition or occurrence that a competent licensee generally recognizes will significantly and adversely affect the value of the property, significantly reduce the structural integrity of improvements to real estate, or present a significant health risk to occupants of the property; or information that indicates that a party to a transaction is not able to or does not intend to meet his or her obligations under a contract or agreement made concerning the transaction.

No representation is made as to the legal validity of any provision or the adequacy of any provision on any specific transaction