

CENTRAL EASTSIDE COMMERCIAL INDUSTRIAL PRODUCTION KITCHENS

Mt. Whitney Building 602 SE 11th Avenue, Portland OR 97214

FOR LEASE



Mt. Whitney is a 11,711 sq. ft. building with 4 fully equipped production kitchen suites. Each suite is Multnomah County Health Department approved and is plug-and-play ready for catering, restaurant support, ghost, cloud, or production use. Features include a mezzanine level for storage or office use, private restroom, truck loading area, and parking space.

You will be in good culinary company . . . join Pacific Foods and Campbells Soup who are leasing Mt. Whitney kitchens. Sign a lease today and get cooking tomorrow.

Tricia Anderson
tricia@northrimpx.com | 503.525.1927



northrimpx.com

819 SE Morrison Street, Ste 110, Portland OR 97214 | 503.525.1925
Matthew Schweitzer | matt@northrimpx.com | 503.381.3134



Suite 100 Features and Amenities

- Equipped commercial production kitchen
- Mezzanine level for office storage
- Unisex restroom and storage closet
- Designated parking space
- Locally owned, maintained, and managed

New Commercial Equipment

- 8'x10' Walk-in cooler
- 6-Burner gas range with oven
- 10' Exhaust hood
- Gas convection oven
- Deep Fryer
- 2 & 3 compartment sinks
- Upright ventless dishwasher
- Hand sink
- Dish table
- Mop sink in janitor closet
- Grease trap

Location Details

- Easy access to downtown bridges, I-5 & I-84
- Close to multiple TriMet stops



Virtual Tour

tinyurl.com/WhitneyKitchen100



CENTRAL EASTSIDE COMMERCIAL INDUSTRIAL PRODUCTION KITCHENS

Mt. Whitney Building 602 SE 11th Avenue, Portland OR 97214

FOR LEASE

Tricia Anderson

tricia@northrimpx.com | 503.525.1927



northrimpx.com

819 SE Morrison Street, Ste 110, Portland OR 97214 | 503.525.1925
Matthew Schweitzer | matt@northrimpx.com | 503.381.3134

Suite 200 Features and Amenities

- Equipped commercial production kitchen
- Roll-up door
- Mezzanine level for office storage
- Unisex restroom and storage closet
- Designated parking space
- Locally owned, maintained, and managed

New Commercial Equipment

- 8'x10' Walk-in cooler
- 6-Burner gas range with oven
- 10' Exhaust hood
- Gas convection oven
- Deep Fryer
- 2 & 3 compartment sinks
- Upright ventless dishwasher
- Hand sink
- Dish table
- Mop sink in janitor closet
- Grease trap

Location Details

- Easy access to downtown bridges, I-5 & I-84
- Close to multiple TriMet stops



Virtual Tour

tinyurl.com/WhitneyKitchen200



CENTRAL EASTSIDE COMMERCIAL INDUSTRIAL PRODUCTION KITCHENS

Mt. Whitney Building 602 SE 11th Avenue, Portland OR 97214

FOR LEASE

Tricia Anderson

tricia@northrimpx.com | 503.525.1927



northrimpx.com

819 SE Morrison Street, Ste 110, Portland OR 97214 | 503.525.1925
Matthew Schweitzer | matt@northrimpx.com | 503.381.3134



MEZZANINE SUITE #200



KITCHEN SUITE #100



KITCHEN SUITE #200

CENTRAL EASTSIDE COMMERCIAL INDUSTRIAL PRODUCTION KITCHENS
Mt. Whitney Building 602 SE 11th Avenue, Portland OR 97214

FOR LEASE

Tricia Anderson
tricia@northrimpx.com | 503.525.1927



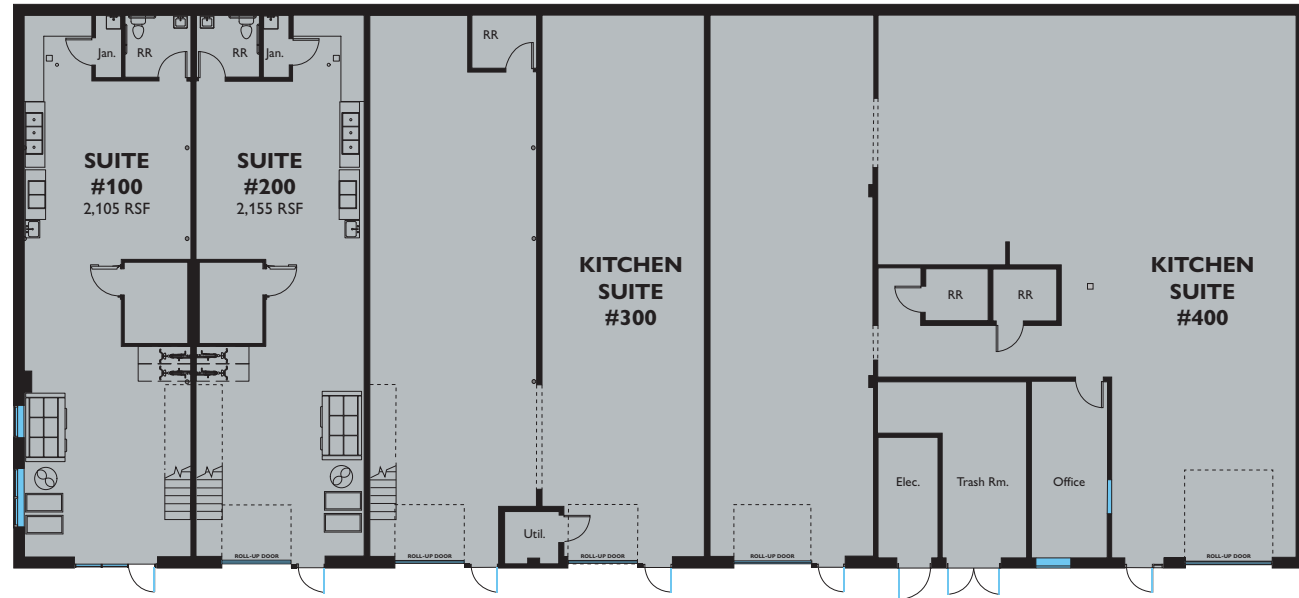
northrimpx.com

819 SE Morrison Street, Ste 110, Portland OR 97214 | 503.525.1925
Matthew Schweitzer | matt@northrimpx.com | 503.381.3134

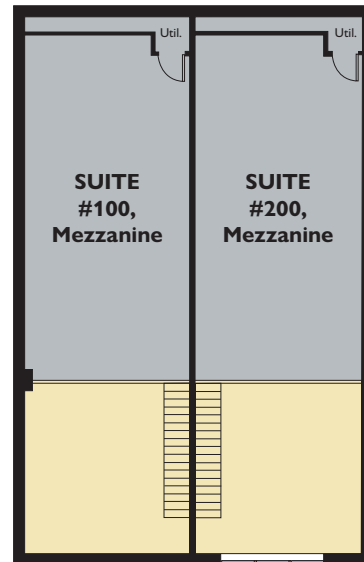
The information contained in this package has been obtained from sources we believe to be reliable. While we do not doubt its accuracy, we have not verified it and make no guarantee, warranty or representation about it. It is your sole responsibility to independently confirm its accuracy and completeness. Any projections, opinions, assumptions or estimates used are for example only and do not represent the current or future performance of the property. ©2023 North Rim Commercial Properties

Floor Plan

FIRST FLOOR



SECOND FLOOR



Tricia Anderson
tricia@northrimpx.com | 503.525.1927



northrimpx.com

819 SE Morrison Street, Ste 110, Portland OR 97214 | 503.525.1925
Matthew Schweitzer | matt@northrimpx.com | 503.381.3134



CENTRAL EASTSIDE COMMERCIAL INDUSTRIAL PRODUCTION KITCHENS

Mt. Whitney Building 602 SE 11th Avenue, Portland OR 97214

FOR LEASE

Tricia Anderson
tricia@northrimpx.com | 503.525.1927



northrimpx.com

819 SE Morrison Street, Ste 110, Portland OR 97214 | 503.525.1925
 Matthew Schweitzer | matt@northrimpx.com | 503.381.3134