

Village Shoppes of Madison

12050-12120 County Line Road, Madison, AL 35756

Description:

Publix Anchored Center

143,543 sf specialty retail center

Site frontage on County Line Road and Browns Ferry Road with traffic counts exceeding 30,000 cars per day

Truly a neighborhood retail center, with no competition from other credit anchored centers in the local vicinity

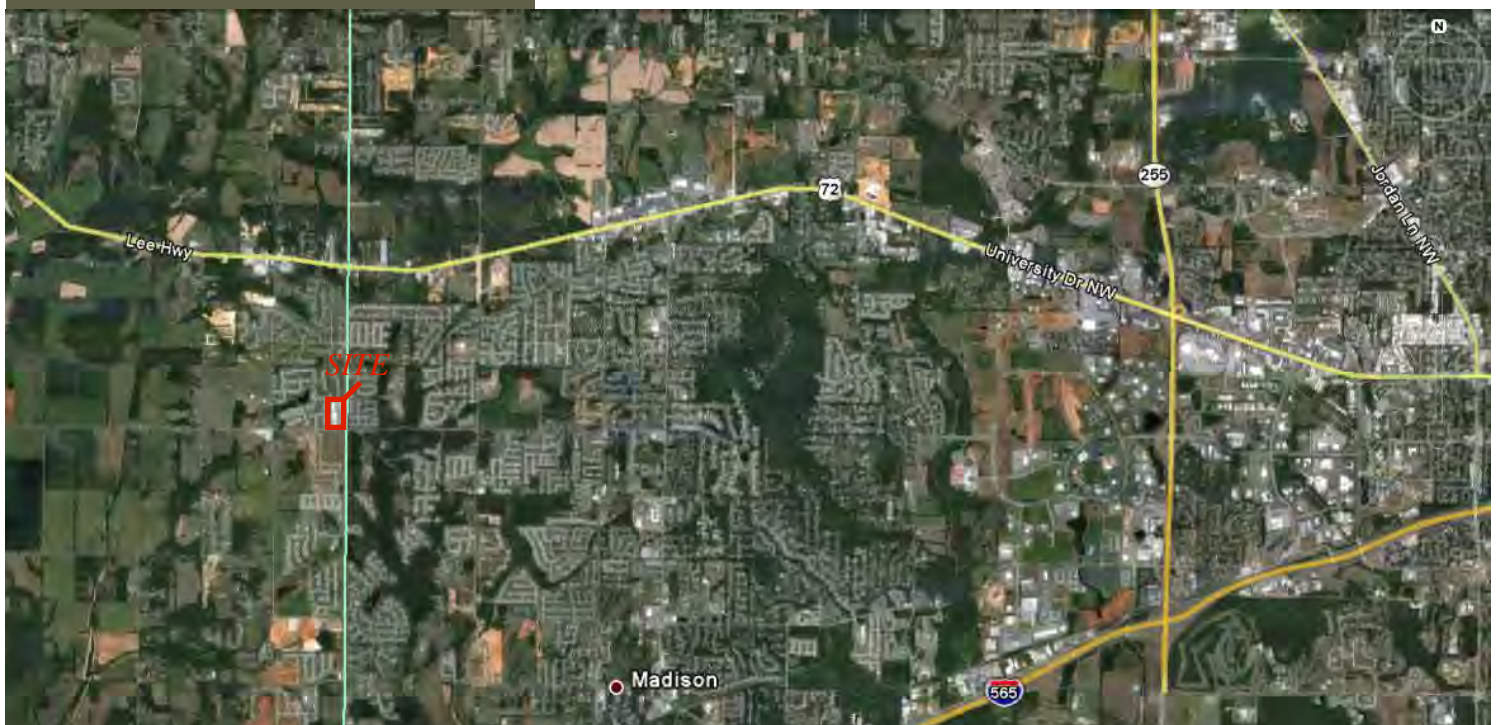
Two Elementary schools, a middle school and a high school all within three miles of the shopping center

For more information:
1-888-342-9378

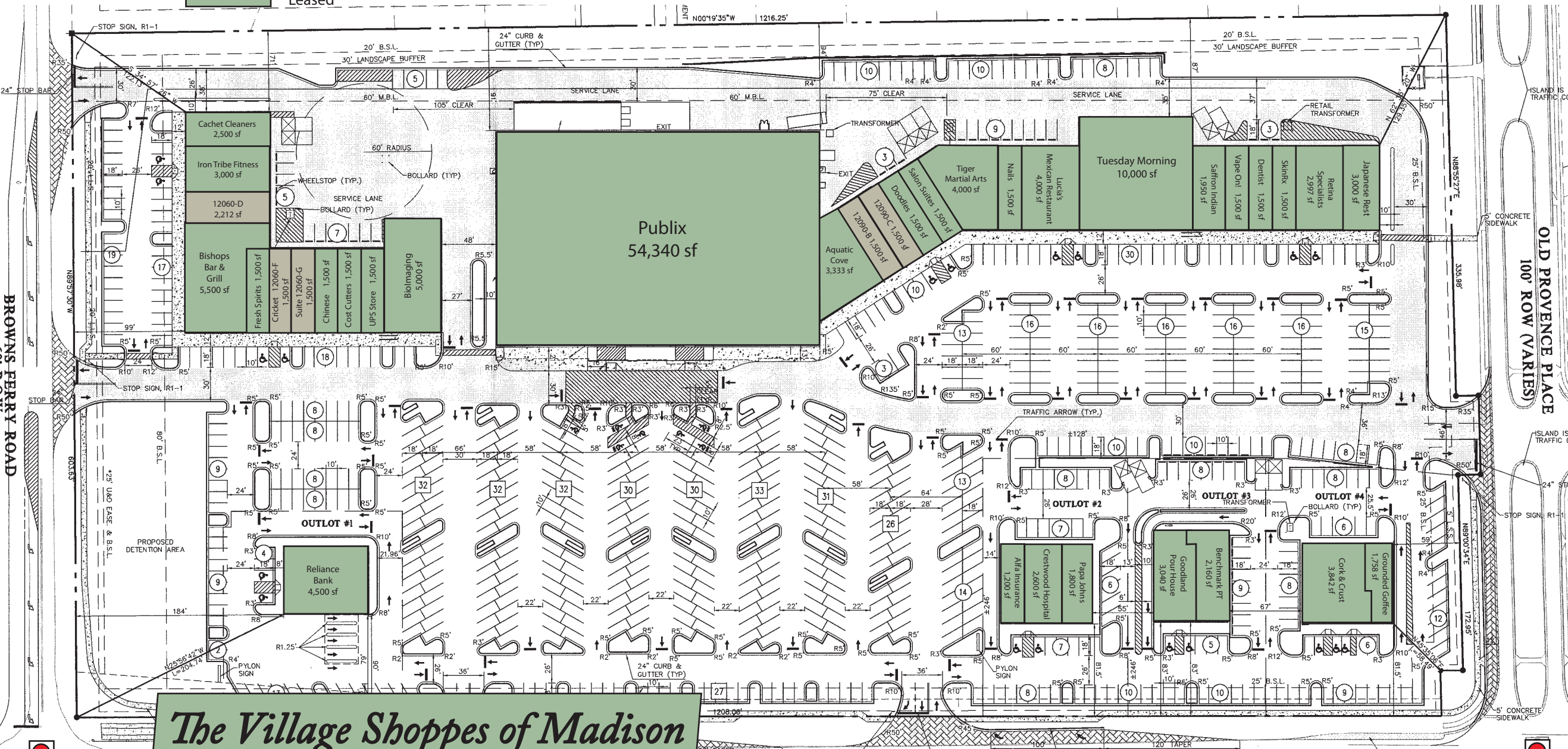


The Village Shoppes of Madison located in Madison, Alabama (a suburb of Huntsville) is a Publix anchored development, the only grocery anchored center in the area, surrounded by high end residential. The beautiful center encompasses 143,543 square feet of space including four outparcels along County Line Road. Space is available immediately. Join Tuesday Morning, Reliance Bank and other specialty retailers.

| | <u>1 mile radius</u> | <u>3 mile radius</u> | <u>5 mile radius</u> |
|-------------------|----------------------|----------------------|----------------------|
| 2010 Population | 8,494 | 27,452 | 64,403 |
| 2018 Population | 9,742 | 30,387 | 71,496 |
| Total Households | 3,326 | 11,068 | 27,527 |
| Average HH Income | \$158,376 | \$137,233 | \$130,069 |



Available
Leased



The Village Shoppes of Madison

COUNTY LINE ROAD
120' R.O.W.



EXISTING TRAFFIC LIGHT



EXIST TRAF LIGHT

BROWNS FERRY ROAD
60' R.O.W.

OLD PROVENCE PLACE
100' ROW (VARIES)

REMOVE ASPHALT AS NECESSARY FOR PIPE INSTALLATION UP TO EDGE OF TRAVEL LANE

REMOVE ASPHALT AS NECESSARY FOR PIPE INSTALLATION UP TO EDGE OF TRAVEL LANE