

2017 E. 9TH STREET OFFICES @

THE 9

CLEVELAND, OHIO

JIM KRIVANEK
Vice President
216.525.1498
jkrivanek@crecorealestate.com

RICO A. PIETRO, SIOR
Principal
216.525.1473
rpietro@crecorealestate.com

 **CUSHMAN &
WAKEFIELD**

 **CRESCO**
Real Estate

2017 E. 9TH STREET

AREA / NEIGHBORHOOD AMENITIES

- EXCELLENT ACCESS TO ALL MAJOR FREEWAY SYSTEMS AND PUBLIC TRANSPORTATION
- GROWING RESIDENTIAL COMMUNITY
- HOME TO ALMOST 3,000 RESIDENTS
- 15 HOTELS WITH OVER 3,300 ROOMS CURRENTLY AVAILABLE IN OR ADJACENT TO THE CBD

WITHIN WALKING DISTANCE TO THE FOLLOWING

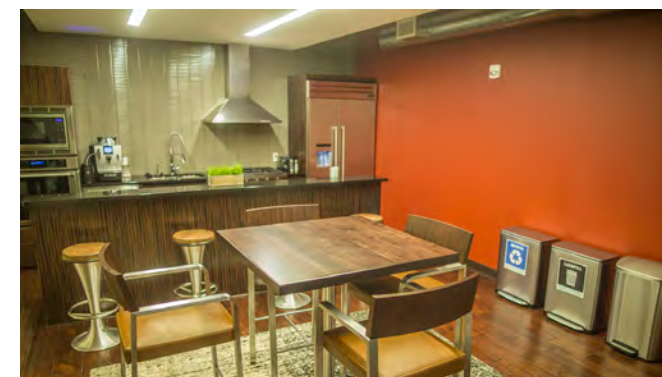
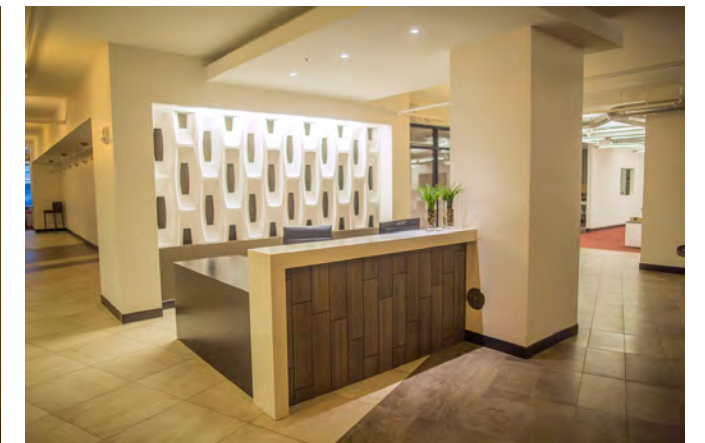
- THE 9 METROPOLITAN SIGNATURE HOTEL
- RTA CENTRAL STATION
- HEINEN'S GROCERY STORE
- QUICKEN LOANS ARENA
- PROGRESSIVE FIELD
- GREATER CLEVELAND AQUARIUM
- JACOBS PAVILION AT NAUTICA
- JACK CLEVELAND CASINO
- PLAYHOUSE SQUARE DISTRICT, HOME TO NUMEROUS ENTERTAINMENT & THEATRE VENUES AND RESTAURANTS
- RETAIL SHOPS
- ROCK & ROLL HALL OF FAME & MUSEUM
- GREAT LAKES SCIENCE CENTER
- ENDLESS DINING OPTIONS
- LAKE ERIE

2017 E. 9th Street is a thirteen (13) story office building located in a historic property renovated into an Autograph Collection Marriot Hotel and luxury apartments. The building overlooks the newly renovated Public Square. Large windows provide beautiful views of downtown Cleveland and the Flats. 8,653 SF of high end finished office space is currently available for lease. The space offers open areas, conferencing, private offices and access to the Metropolitan and Living at The 9 amenities.



2017 E. 9TH STREET

MOVE-IN



READY.

SECOND FLOOR • SUITE 200 • TOTAL | 8,653 RSF



2ND

2017 E. 9TH STREET

Huntington Convention Center of Cleveland
9 minutes

JACK Cleveland Casino
2 minutes

Cleveland Arcade
4 minutes

Playhouse Square
15 minutes

Public Square
2 minutes

The Flats
10 minutes

Settler's Landing
8 minutes

Tower City Center
2 minutes

Progressive Field
5 minutes

Wolstein Center
15 minutes

Canal Basin Park

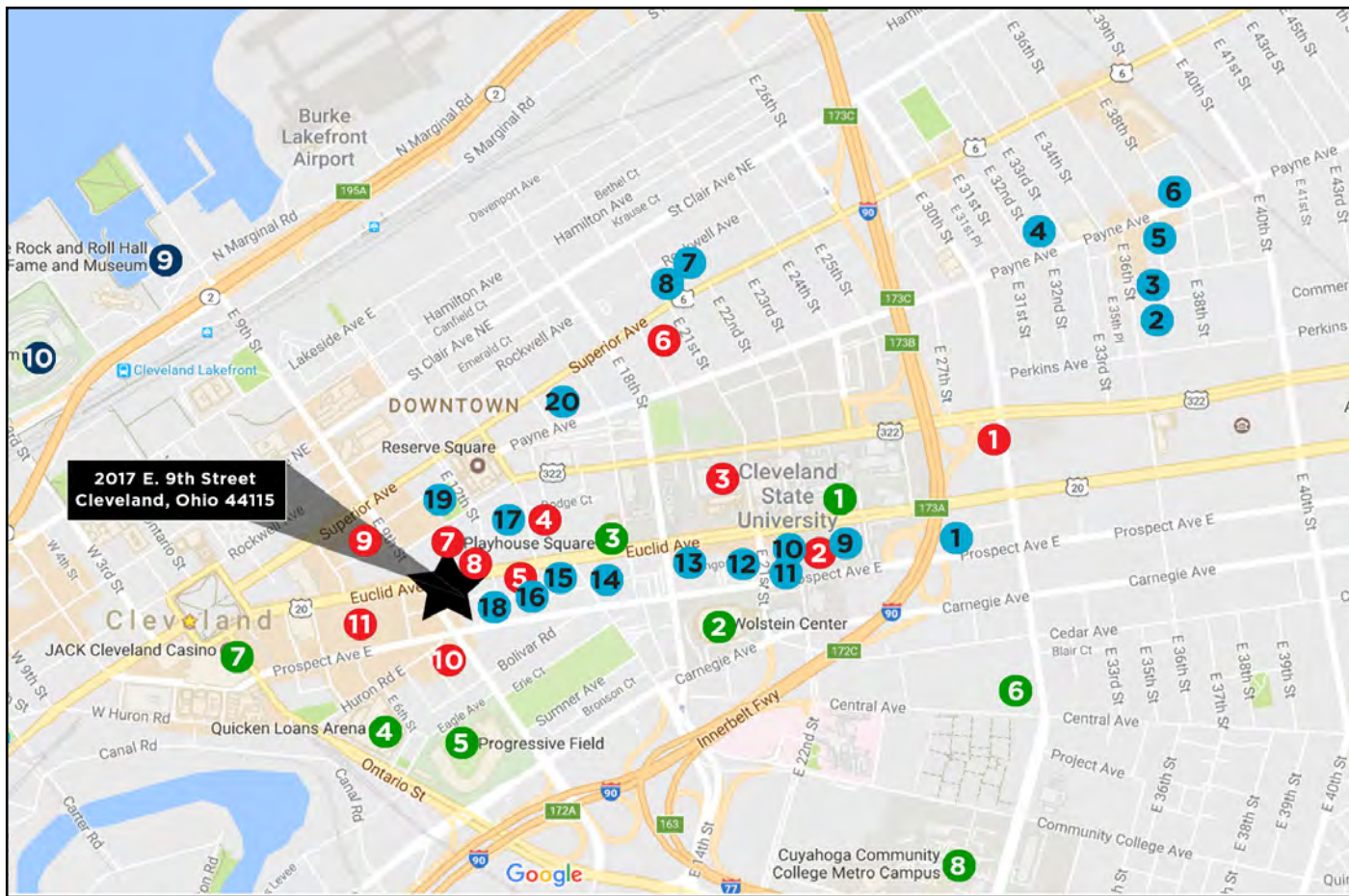
- RESTAURANTS
4TH STREET**
- Chinato
 - Butcher & the Brewer
 - Mabel's BBQ
 - Lola
 - Pickwick & Frolic
 - Harry Buffalo
 - Chocolate Bar
 - Red The Steakhouse
 - Saigon Restaurant & Bar
 - Hilarities
 - House of Blues
 - Flannery's Pub
 - The Greenhouse Tavern
 - Wonder Bar
- 3 minutes**

2017 E. 9TH STREET

Centrally Located in the Cleveland Central Business District

Urban Vibe, Vibrant Night-life, Access to Greenspace & Public Transportation: A Growing Destination

Art, history and luxury blend seamlessly at our iconic downtown Cleveland hotel, Metropolitan at The 9 – a masterpiece of style and technology. Savor a unique travel experience full of character and bold design, with distinctive amenities and a cutting-edge community. A member of the Marriott's Autograph Collection, our daring property features dynamic modern luxury, with live entertainment in Alex Theater, historic bank vaults for wining and dining, a rooftop lounge, an award-winning restaurant, an indoor dog park and sumptuous hotel rooms and suites.



FACILITIES

1. Cleveland State University
2. Wolstein Center
3. Playhouse Square
4. Quicken Loans Arena
5. Progressive Field
6. Cleveland Public Library
7. JACK Cleveland Casino
8. Cuyahoga Community College Metro Campus
9. Rock & Roll Hall of Fame & Museum
10. First Energy Stadium

CAFE

1. Java Island
2. Cafe Ah-Roma
3. Joe Maxx Coffee
4. Moko Coffee
5. Starbucks
6. Artefino Cafe
7. Vintage Tea & Coffee
8. Copper Moon
9. Phoenix Coffee
10. A. J. Roccas
11. Pour Cleveland

RESTAURANTS

1. Southern Comfort Cuisine
2. Tink Holl Seafood Restaurant, Inc.
3. Szechuan Gourmet
4. Wonton Gourmet & BBQ
5. Map of Thailand
6. Hansol
7. Emperor's Palace
8. The Lancer on 21
9. Elements Bistro
10. Rascal House
11. Bombay Chaat
12. Cafe Bon Appetit
13. Pedros Pedros
14. Sung's House
15. Otto Mosers Restaurant
16. District
17. Cowell & Hubbard
18. Encore Restaurant & Blue Bar
19. Great Taste Chinese Restaurant
20. Hofbrauhaus Cleveland



CLEVELAND METROPARKS

THE CLEVELAND ARCADE

ADEGA RESTAURANT

METROPOLITAN AT THE 9

PLAYHOUSE SQUARE

PUBLIC SQUARE

Work. Play. Live.

Cleveland's Central Business District offers tenants access to a historic downtown feel with today's modern elements. With an expansive mix of restaurants, shopping and fun, the CBD is the best place to work.

ROCK & ROLL HALL OF FAME

THE VAULT

CONFERENCE AVAILABILITY

AZURE ROOFTOP

PARKING



Key Parking Data Points

- Lots range in cost from \$7.00 to \$50.00 per day and \$130.00 to \$230.00 per month
- Average daily rate = starting at \$6.00
- Average monthly rate = \$145.00
- Early Bird daily prices range from \$7.00 to \$9.00 per day
- 11 lots are gated and manned
- Valet and shuttle services available

Play. Live.

Everything you need, on and off the clock.

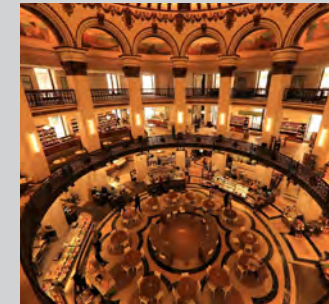
At 2017 E. 9th Street, everything you need is at your fingertips. You can work, eat, shop and relax, all within the neighborhood. Here's what your average weekday might look like.



8:30a

STARBUCKS COFFEE

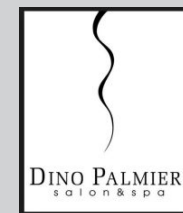
Grab a quick morning coffee on your way in the office at Starbucks, which is conveniently located in Tower City, attached to 100 Public Square.



10:00a

HEINENS

Located directly in the building, Heinens is conveniently located so you can grab a mid-morning snack or healthy breakfast.



10:30a

STUDIO PALMIERI

Area service in the Warehouse District to stop in for a quick cut midway through your work day.



11:30a

LUNCH AT ADEGA

Enjoy lunch at ADEGA, a trendy on-site restaurant with authentic, modern mediterranean cuisine.



5:30p

LEDGER BAR

Tucked above the lobby, this intimate lounge is made for conversation and people watching. Relish artisan cocktails and classic recipes along with local craft beer and special wines from around the world.



7:30p

VAULT

Enjoy over 30 handcrafted cocktails fashioned by resident mixologists, small plate menu offerings and exceptional service in the city's premium bar and speakeasy.



**Discover a whole
new way to work.**

2017 E. 9TH STREET

JIM KRIVANEK

Vice President

216.525.1498

jkrivanek@crescorealestate.com

RICO A. PIETRO, SIOR

Principal

216.525.1473

rpietro@crescorealestate.com



**CUSHMAN &
WAKEFIELD**



3 Summit Park Drive, Suite 200

Cleveland, Ohio 44131

216.520.1200

crescorealestate.com