



CAPITOL  
EQUITIES

# FOR LEASE

View all of our properties at [capitolequities.com](http://capitolequities.com)

305 W. NATIONWIDE BLVD. COLUMBUS, OHIO 43215

GREAT BRANDING OPPORTUNITY!



## RARE FREE-STANDING BUILDING!

- AVAILABLE SPACE:** 10,000 square feet
- NET RENTAL RATE:** \$20.00/SF
- OPERATING EXPENSES:** \$5.25 per square foot (Tenant pays utilities)
- PARKING:** 43 on-site spaces available at \$150/space/month

### AMENITIES:

- Terrific location directly across from Huntington Park and Nationwide Arena
- Restaurants, entertainment and parks all in walking distance
- Abundant signage offers a great branding opportunity
- Located on a corner at a full traffic light with excellent visibility
- 16'-17' vaulted ceilings
- Loft office with exposed brick

## LIKE TO GET MORE INFO?

We'd love to hear from you.

**J.R. Kern**

[jrkern@capitolequities.com](mailto:jrkern@capitolequities.com)

P: 614.760.5660 x 124

**Ed Fellows**

[efellows@capitolequities.com](mailto:efellows@capitolequities.com)

P: 614.760.5660 x 123

**Capitol Equities Realty**

P: 614.760.5660

F: 614.798.0015

580 N. Fourth Street, Suite 120  
Columbus, Ohio 43215

[capitolequities.com](http://capitolequities.com)



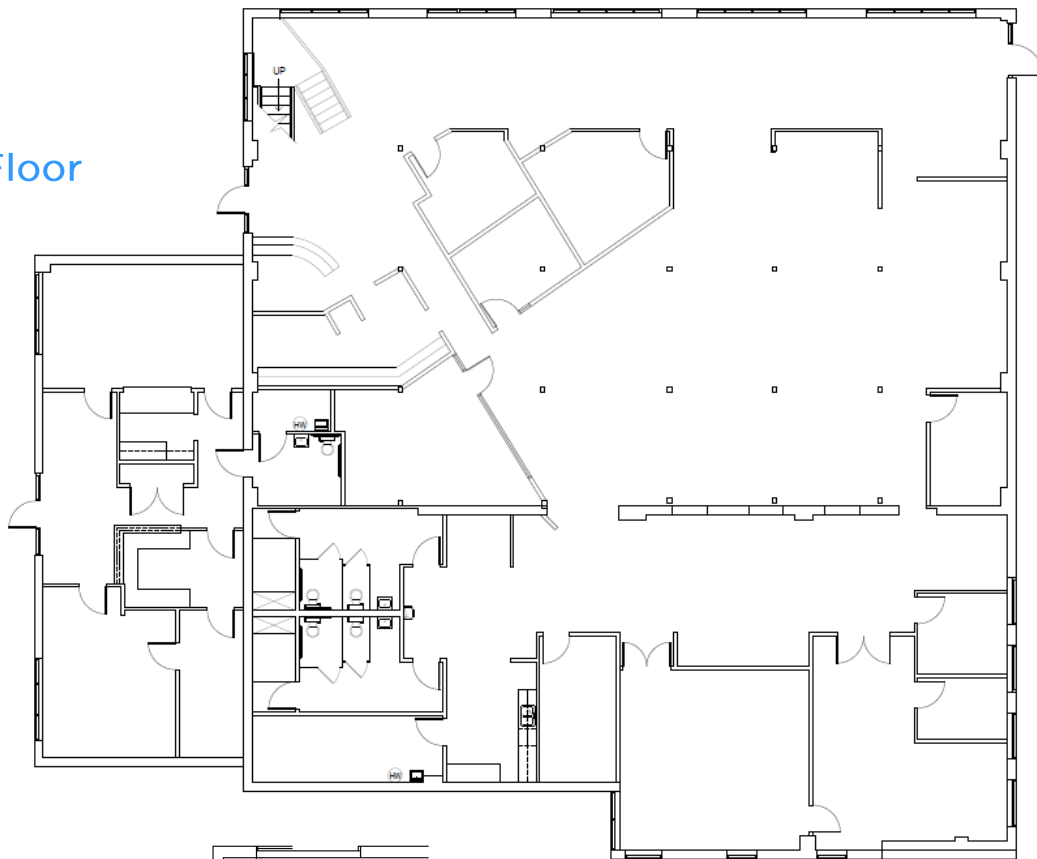
CAPITOL  
EQUITIES

FOR LEASE

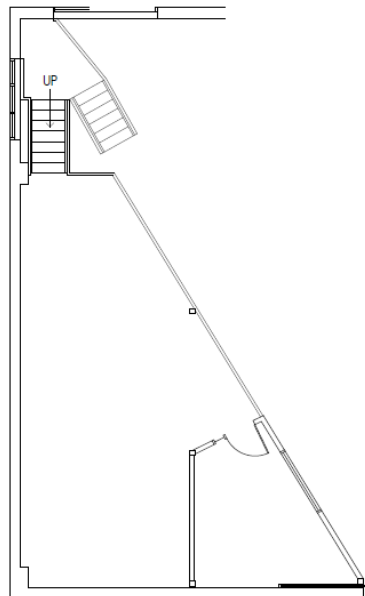
305 W NATIONWIDE BLVD. COLUMBUS, OHIO 43215

FLOOR PLAN

First Floor



Mezzanine







CAPITOL  
EQUITIES

FOR LEASE

305 W NATIONWIDE BLVD. COLUMBUS, OHIO 43215

Interior Photos





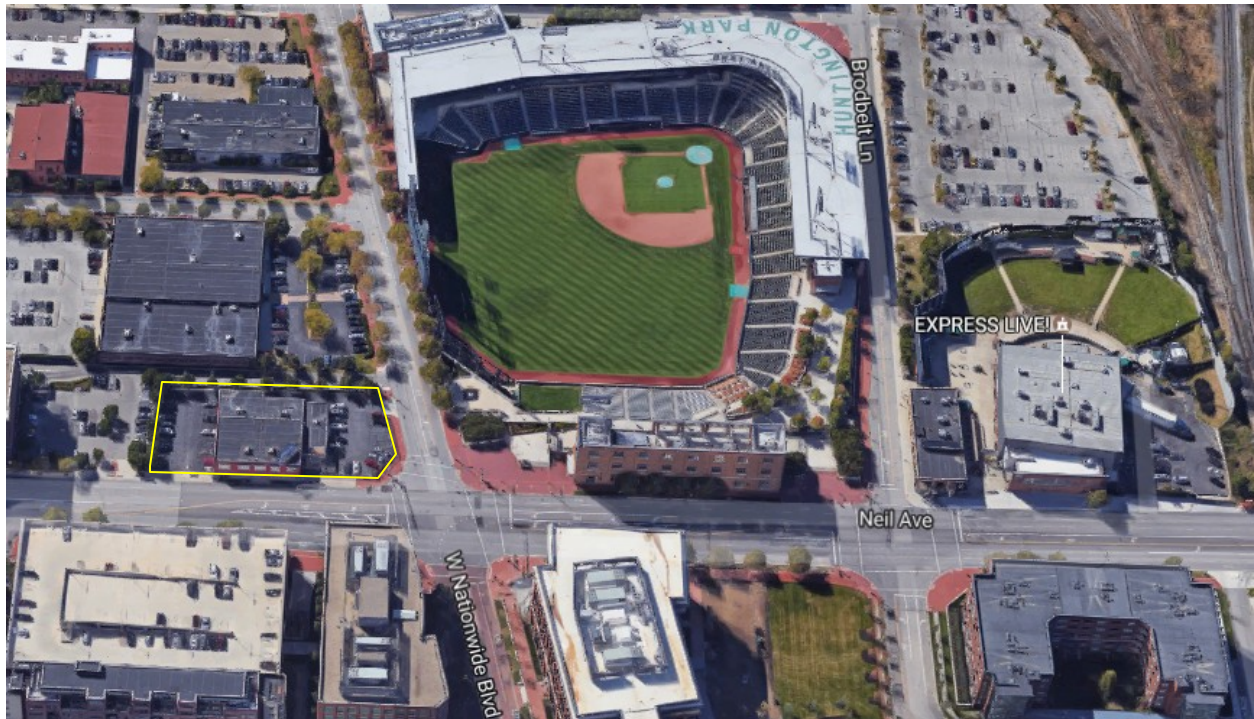


CAPITOL  
EQUITIES

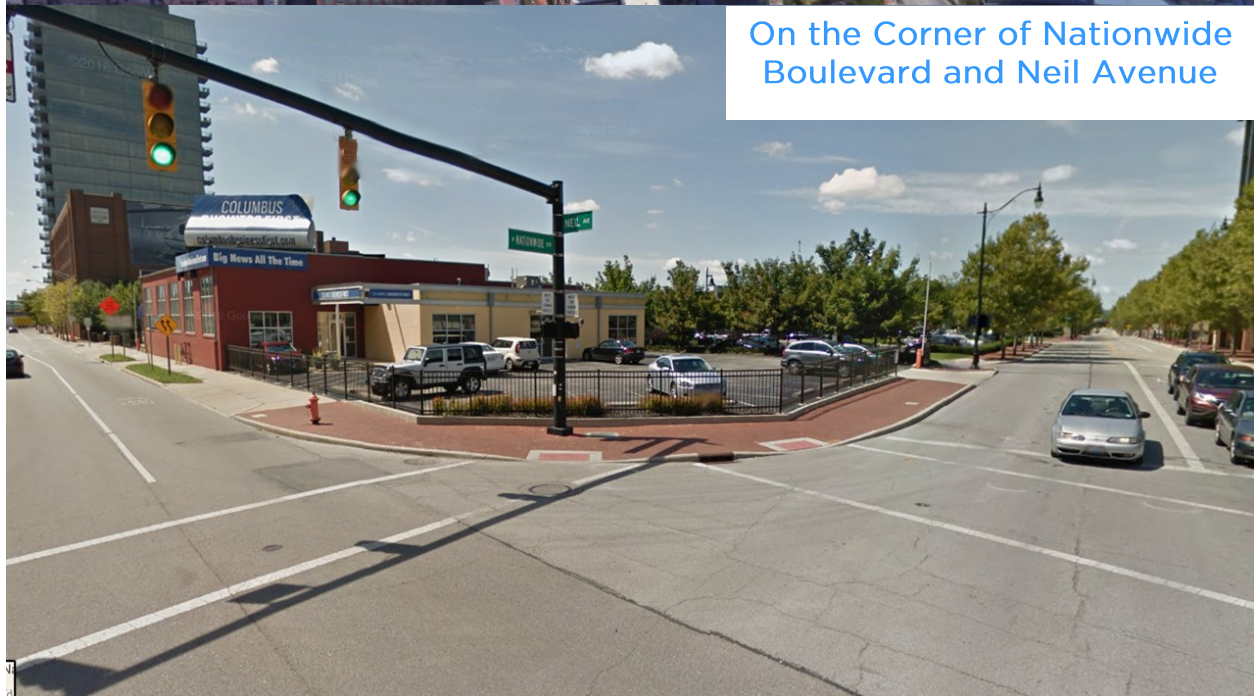
FOR LEASE

305 W NATIONWIDE BLVD. COLUMBUS, OHIO 43215

Great location with tremendous branding opportunity!



On the Corner of Nationwide  
Boulevard and Neil Avenue





CAPITOL  
EQUITIES

FOR LEASE

305 W NATIONWIDE BLVD. COLUMBUS, OHIO 43215

Excellent Access to all Arena District Amenities!

