

# STIMSON RANCH #3

# FOR SALE

1,583 Acres

Bradley, CA  
Monterey County

\$2,800,000

Prime Monterey County Land for Sale! 1,583.7 acres of mixed terrain ranch land for sale in southern Monterey County. Property contains 9 tax parcels along Jolon Road. Included is a ranch headquarters with workers home, barn and corals. Ranch has been operated as a spring feeder ranch as conditions permit. 160 acres of the ranch is located adjacent to a producing vineyard with matching soil and water conditions. Property contains excellent hunting habitat with populations of deer, pig, quail and dove.

## TRI Outdoor Properties

LAND BROKERAGE / Recreational · Agricultural · Conservation

A Division of TRI Commercial Real Estate

*Building Great Relationships Between People and the Outdoors*

SERVING  
NORTHERN & CENTRAL  
CALIFORNIA

# STIMSON RANCH #3



*Great multi-use property grazing gorgeous land, potential vineyard land and recreation land.*

**TRI** *Outdoor Properties*

LAND BROKERAGE / Recreational · Agricultural · Conservation

A Division of TRI Commercial Real Estate

*Building Great Relationships Between People and the Outdoors*

SERVING  
NORTHERN & CENTRAL  
CALIFORNIA

# STIMSON RANCH #3



*Property contains an old Ranch headquarters with a worker's home, barn, shed and corrals.*

**TRI** *Outdoor Properties*

LAND BROKERAGE / Recreational · Agricultural · Conservation

A Division of TRI Commercial Real Estate

*Building Great Relationships Between People and the Outdoors*

SERVING  
NORTHERN & CENTRAL  
CALIFORNIA

# STIMSON RANCH #3



*Ranch has great habitat for deer, pigs and game birds.*

**TRI** *Outdoor Properties*

LAND BROKERAGE / Recreational · Agricultural · Conservation

A Division of TRI Commercial Real Estate

*Building Great Relationships Between People and the Outdoors*

SERVING  
NORTHERN & CENTRAL  
CALIFORNIA

Frudden Road  
Bradley, CA 93426

# STIMSON RANCH #3

Cross Street: Jolon Road

APN: 423-071-030; 423-071-055;  
423-071-054; 423-071-052;  
423-071-051; 423-071-046;  
423-071-049; 423-071-050;  
423-091-030

Acres: 1,583.7

Elevation Minimum/Maximum:  
885 Feet - 847' - 1,648 Feet

Latitude: 35.900769  
Longitude: -120.931354

House SF: 960

Zoning: RGIGO: F40 & F80  
MLS# on Realtor.com: 1504340

Price: \$2,800,000

Terms: Cash or submit terms.

Amenities: Mixed Use Property, 160  
Acres suitable for vineyard, good  
roads throughout; easy access; fenced  
for grazing; good hunting and recre-  
ation property.



**TRI** *Outdoor Properties*  
LAND BROKERAGE / Recreational · Agricultural · Conservation  
A Division of TRI Commercial Real Estate  
*Building Great Relationships Between People and the Outdoors*

SERVING  
NORTHERN & CENTRAL  
CALIFORNIA

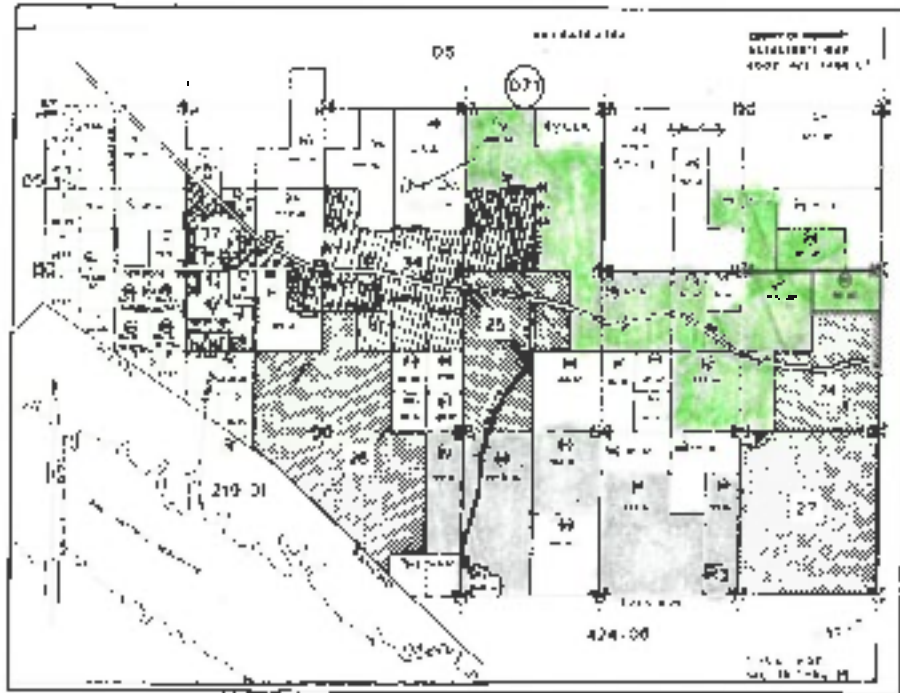
# STIMSON RANCH #3



First American

FirstAm Tax Map

CA



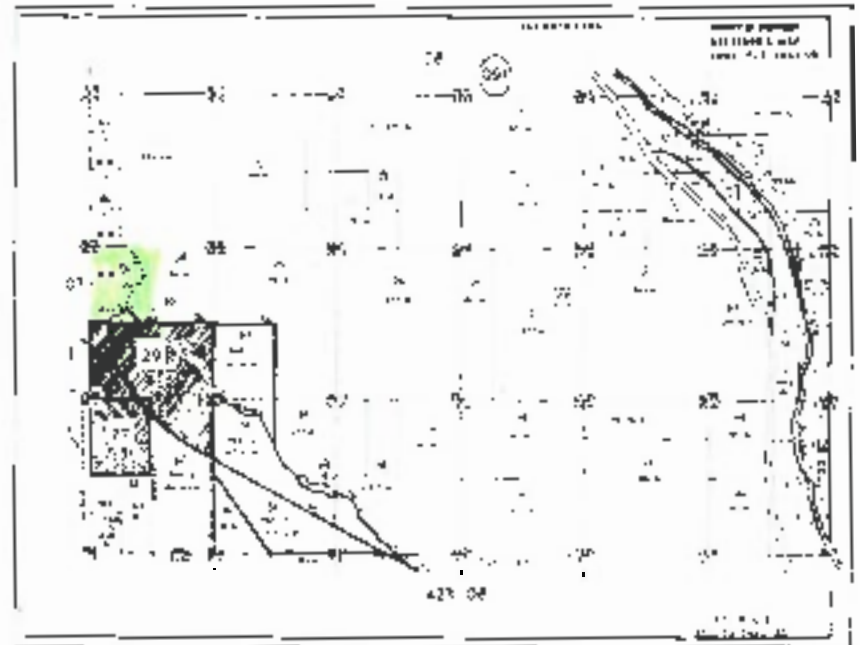
**IMPORTANT - READ CAREFULLY:** THIS PORTAL IS NOT AN OFFICIAL RECORD. IT IS MERELY AN REPRESENTATION OF THE CONDITION OF THE PUBLIC RECORDS AS OF THE DATE THIS PORTAL WAS GENERATED. THE JURISDICTION OF THE PUBLIC RECORDS OF THE COUNTY OF SAN DIEGO IS LIMITED TO THE PUBLIC RECORDS. THIS PORTAL IS NOT A SUBSTITUTE FOR THE PUBLIC RECORDS AND MAY NOT BE USED AS EVIDENCE IN ANY COURT OF LAW. THE PUBLIC RECORDS OF THE COUNTY OF SAN DIEGO ARE AVAILABLE AT THE COUNTY CLERK'S OFFICE, 1000 G STREET, SAN DIEGO, CA 92101. FOR MORE INFORMATION, VISIT [www.sandiego.gov/clerk](http://www.sandiego.gov/clerk). THIS PORTAL IS PROVIDED AS IS AND WITHOUT WARRANTY OF ANY KIND, INCLUDING WARRANTIES OF MERCHANTABILITY, FITNESS FOR A PARTICULAR PURPOSE, AND NON-INFRINGEMENT. THE COUNTY OF SAN DIEGO DOES NOT WARRANT THE ACCURACY, COMPLETENESS, OR QUALITY OF THE INFORMATION PROVIDED HEREIN. THE COUNTY OF SAN DIEGO DOES NOT WARRANT THAT THE INFORMATION PROVIDED HEREIN IS UP-TO-DATE OR THAT THE INFORMATION PROVIDED HEREIN WILL NOT BE SUPERSEDED BY OTHER INFORMATION. THE COUNTY OF SAN DIEGO DOES NOT WARRANT THAT THE INFORMATION PROVIDED HEREIN WILL NOT BE SUPERSEDED BY OTHER INFORMATION. THE COUNTY OF SAN DIEGO DOES NOT WARRANT THAT THE INFORMATION PROVIDED HEREIN WILL NOT BE SUPERSEDED BY OTHER INFORMATION.



First American

FirstAm Tax Map

CA



**IMPORTANT - READ CAREFULLY:** THIS PORTAL IS NOT AN OFFICIAL RECORD. IT IS MERELY AN REPRESENTATION OF THE CONDITION OF THE PUBLIC RECORDS AS OF THE DATE THIS PORTAL WAS GENERATED. THE JURISDICTION OF THE PUBLIC RECORDS OF THE COUNTY OF SAN DIEGO IS LIMITED TO THE PUBLIC RECORDS. THIS PORTAL IS NOT A SUBSTITUTE FOR THE PUBLIC RECORDS AND MAY NOT BE USED AS EVIDENCE IN ANY COURT OF LAW. THE PUBLIC RECORDS OF THE COUNTY OF SAN DIEGO ARE AVAILABLE AT THE COUNTY CLERK'S OFFICE, 1000 G STREET, SAN DIEGO, CA 92101. FOR MORE INFORMATION, VISIT [www.sandiego.gov/clerk](http://www.sandiego.gov/clerk). THIS PORTAL IS PROVIDED AS IS AND WITHOUT WARRANTY OF ANY KIND, INCLUDING WARRANTIES OF MERCHANTABILITY, FITNESS FOR A PARTICULAR PURPOSE, AND NON-INFRINGEMENT. THE COUNTY OF SAN DIEGO DOES NOT WARRANT THE ACCURACY, COMPLETENESS, OR QUALITY OF THE INFORMATION PROVIDED HEREIN. THE COUNTY OF SAN DIEGO DOES NOT WARRANT THAT THE INFORMATION PROVIDED HEREIN IS UP-TO-DATE OR THAT THE INFORMATION PROVIDED HEREIN WILL NOT BE SUPERSEDED BY OTHER INFORMATION. THE COUNTY OF SAN DIEGO DOES NOT WARRANT THAT THE INFORMATION PROVIDED HEREIN WILL NOT BE SUPERSEDED BY OTHER INFORMATION.

## TRI Outdoor Properties

LAND BROKERAGE / Recreational · Agricultural · Conservation

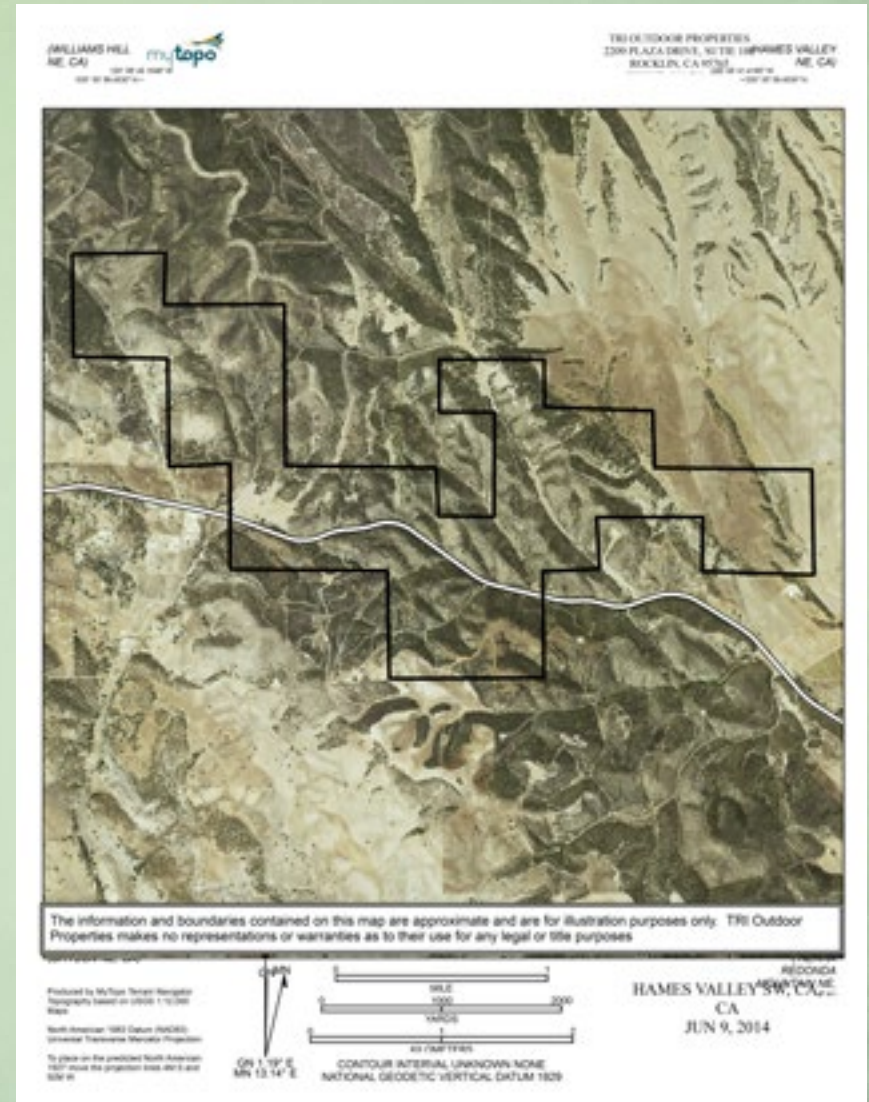
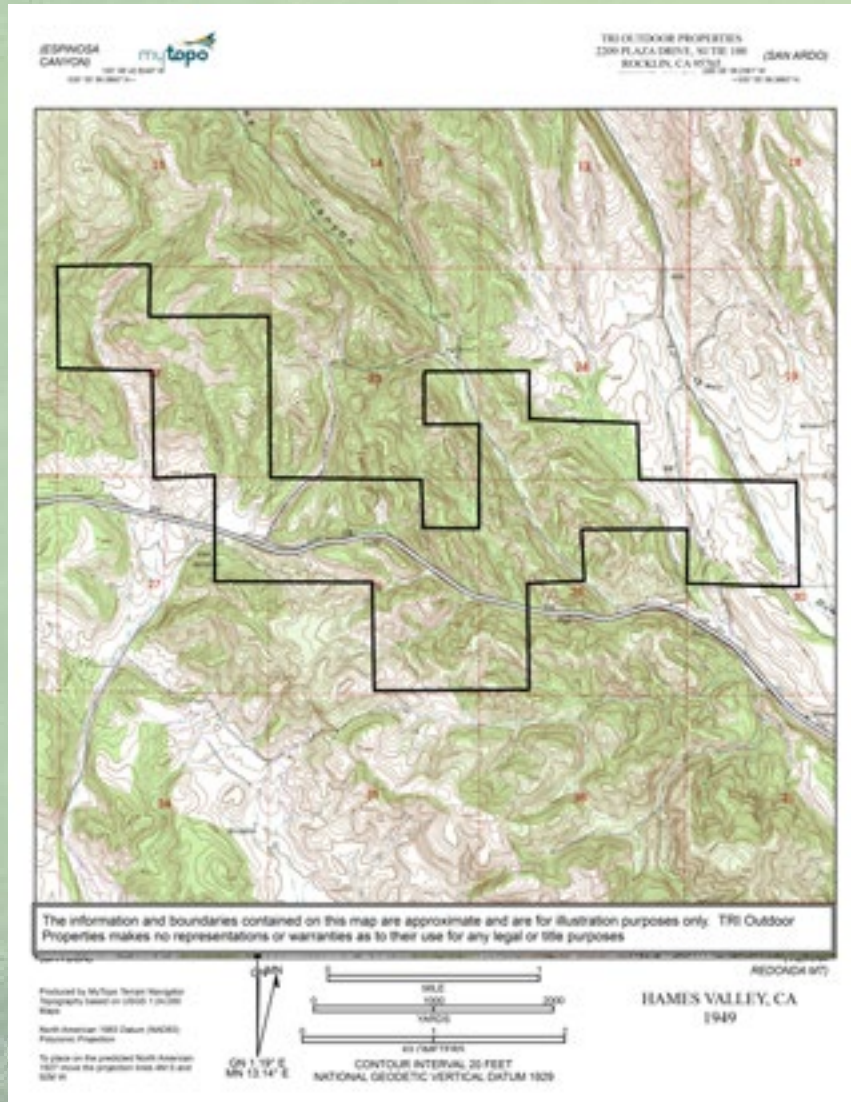
A Division of TRI Commercial Real Estate

Building Great Relationships Between People and the Outdoors

SERVING  
NORTHERN & CENTRAL  
CALIFORNIA

# STIMSON RANCH #2

## Monterey County



# TRI Outdoor Properties

LAND BROKERAGE / Recreational · Agricultural · Conservation

A Division of TRI Commercial Real Estate

*Building Great Relationships Between People and the Outdoors*

SERVING  
NORTHERN & CENTRAL  
CALIFORNIA

# STIMSON RANCH #2

## Monterey County



Contact:

**Mike Kuppenbender**, SIOR, CCIM, ALC  
BRE: 00811112

**Olen Zirkle**, ALC  
BRE: 01190000

Tel: 866.761.7930

Fax: 916.960.5799

2209 Plaza Drive, Suite 100  
Rocklin, CA 95765

[www.trioutdoorproperties.com](http://www.trioutdoorproperties.com)

# TRI Outdoor Properties

LAND BROKERAGE / Recreational · Agricultural · Conservation  
A Division of TRI Commercial Real Estate

*Building Great Relationships Between People and the Outdoors*

SERVING  
NORTHERN & CENTRAL  
CALIFORNIA