

OFFICE SPACE AVAILABLE – 21628 Midland Drive, Shawnee, KS 66218



- Approximately 1,000 SF available for lease at Shawnee Mission Parkway and Monticello
- Includes kitchen shared by all co-tenants
- Close access to K-7 and I-435 via Shawnee Mission Parkway
- Many restaurant options nearby, including Nick & Jake's, Starbucks, Goodcents, Twisted Fresh, Tanner's, McDonald's, Wendy's, Subway, Sombrero's

LEASE RATE: \$21/RSF (15% shared load + \$1.50/RSF utilities)

Jill S. Bergthold, CCIM

jbergthold@fishmancommercial.com

913.782.9000 O | 913.961.0600 C



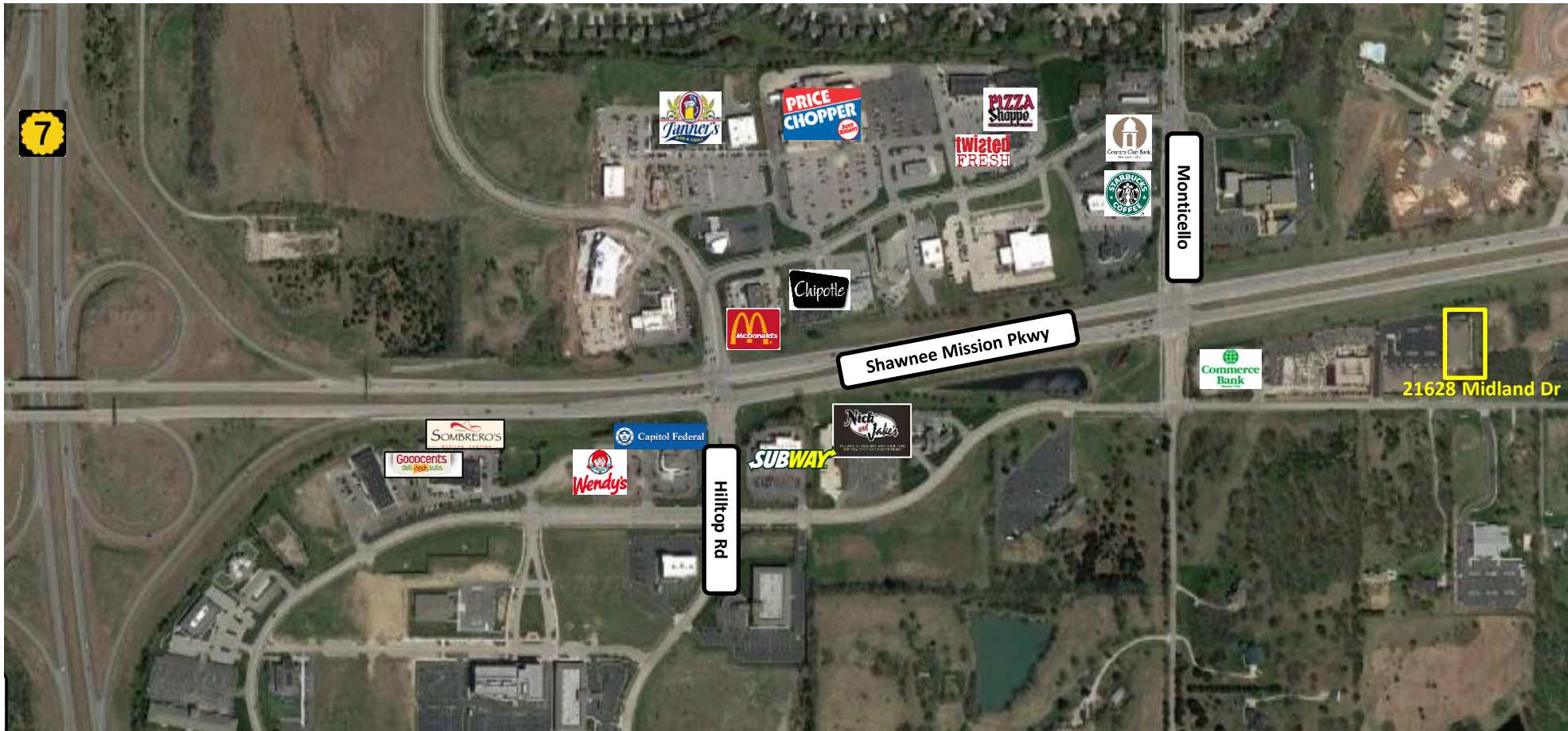
OFFICE SPACE AVAILABLE – 21628 Midland Drive, Shawnee, KS 66218



Jill S. Bergthold, CCIM
jbergthold@fishmancommercial.com
913.782.9000 O | 913.961.0600 C



OFFICE SPACE AVAILABLE – 21628 Midland Drive, Shawnee, KS 66218



Jill S. Bergthold, CCIM

jbergthold@fishmancommercial.com

913.782.9000 O | 913.961.0600 C

