

SOUTHPOINT

OFFICE ♦ CENTER



NOW LEASING | RECENTLY UPDATED BLOOMINGTON OFFICE SPACE

BUILDING HIGHLIGHTS:

 366,807 SF
(3 BUILDINGS)

 14 FLOORS IN
TOWER

 ENERGY STAR
RATING

 LEED SILVER



features + amenities



Lobby café featuring fresh, healthy choices with made-to-order options and grab n' go concept



New gourmet coffee and espresso bar



Outdoor garden space with collaborative seating and games



Renovated fitness center with studio room and group classes



Third space tenant lounge with WiFi and integrated media



Free covered ramp parking and executive parking available



Training and conference rooms

RECENT UPDATES



1650 W 82ND ST | BLOOMINGTON, MN



Close proximity to dining, entertainment and shopping



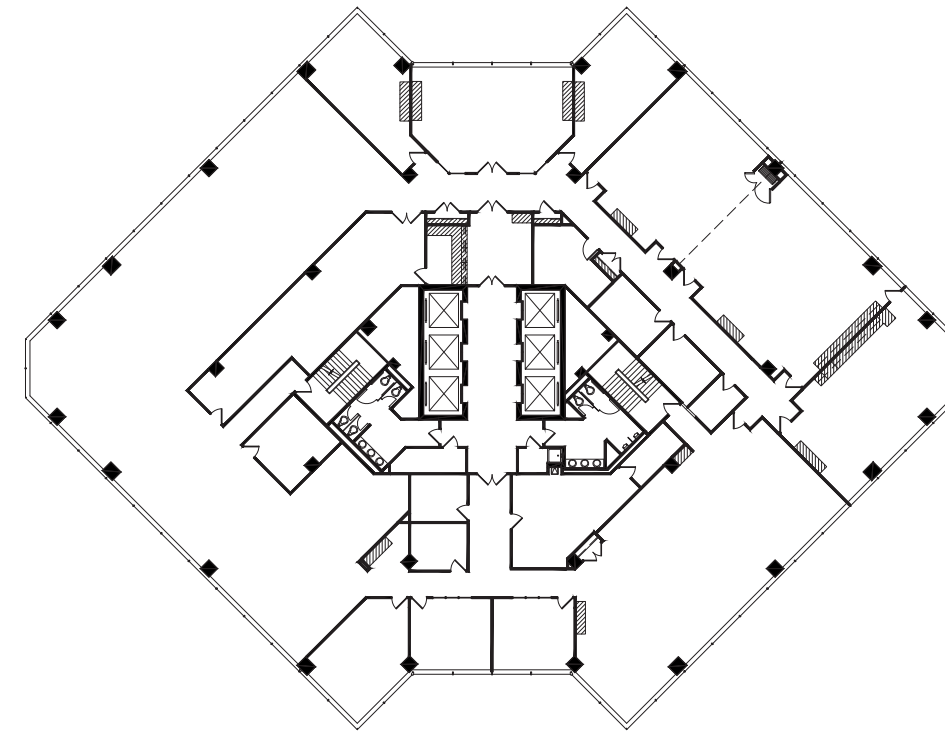
Excellent freeway accessibility via I-494 and I-35W



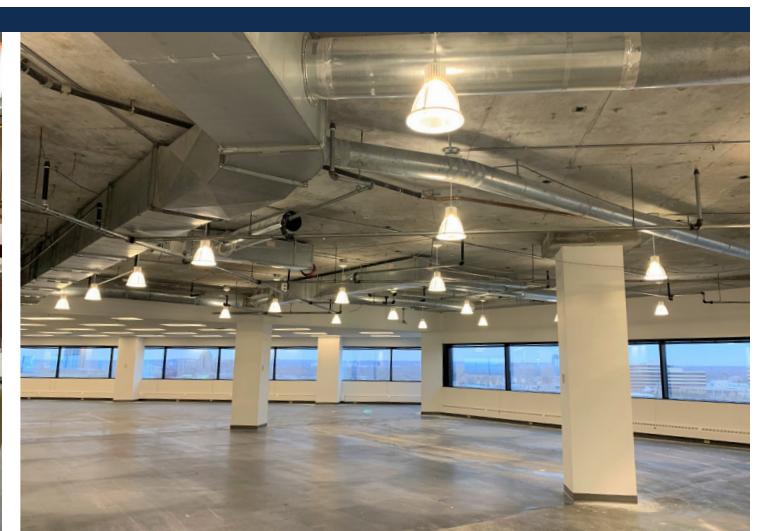
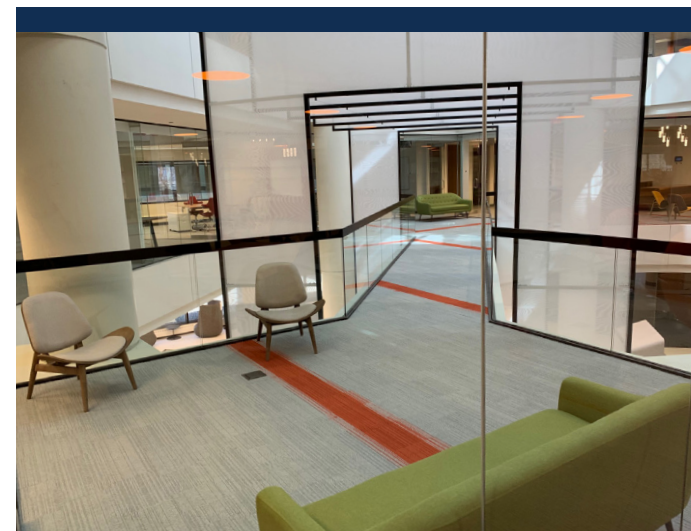
NEW | State-of-the-art fitness center with lockers and showers



AVAILABILITIES OF UP TO 17,294 RSF, INCLUDING FULL FLOORS



typical floor plate



SOUTHPOINT

OFFICE ♦ CENTER

For more information, contact:

STEVE SHEPHERD SIOR
Managing Director

T +1 612 430 9973
steve.shepherd@ngkf.com

MATT ELDER CCIM
Associate Director

T +1 612 430 9974
matt.elder@ngkf.com

NEWMARK

100 South 5th Street #2100
Minneapolis, MN 55402



SouthpointOffice.com

The information contained herein has been obtained from sources deemed reliable but has not been verified and no guarantee, warranty or representation, either express or implied, is made with respect to such information. Terms of sale or lease and availability are subject to change or withdrawal without notice.