

SALT LAKE PAVED AND FENCED YARD FOR LEASE

1050 SOUTH 200 WEST, SALT LAKE CITY, UTAH 84101









PROPERTY HIGHLIGHTS

- 0.95 Acres Available for Lease
- Fenced and Paved Yard
- Warehouse Space Potentially Available
- Possible Rail
- Zoning: CG (General Commercial)
- Easy Access to I-15

LEASE RATE:
\$5,000.00/MONTH

TRAVEL TIMES

	TRAX STATION 1300 SOUTH	1 MIN
	I-15 ACCESS	2 MINS
	I-80 ACCESS	5 MINS
	S.R. 201 ACCESS	5 MINS
	DOWNTOWN SALT LAKE	8 MINS
	SALT LAKE INTERNATIONAL AIRPORT	12 MINS

CONTACT
801.617.1700

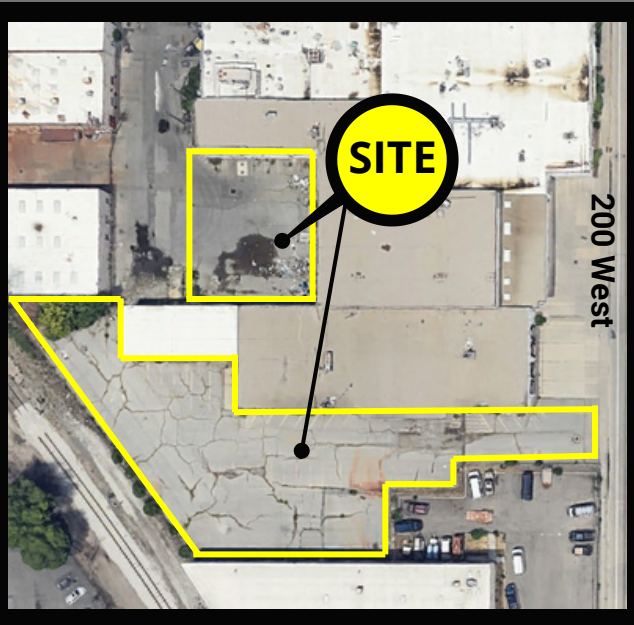
DEREK KLOPFER |
COLTER SMITH |

DEREK.KLOPFER@CRCNATIONWIDE.COM
COLTER.SMITH@CRCNATIONWIDE.COM



SALT LAKE PAVED AND FENCED YARD FOR LEASE

1050 SOUTH 200 WEST, SALT LAKE CITY, UTAH 84101



This information is given with the understanding that all negotiations and/or real estate activity related to the property described above shall be conducted through this cRc Nationwide office. The above information while not guaranteed, was obtained from sources we believe to be reliable.

CONTACT

801.617.1700

DEREK KLOPFER |

DEREK.KLOPFER@CRCNATIONWIDE.COM

COLTER SMITH |

COLTER.SMITH@CRCNATIONWIDE.COM