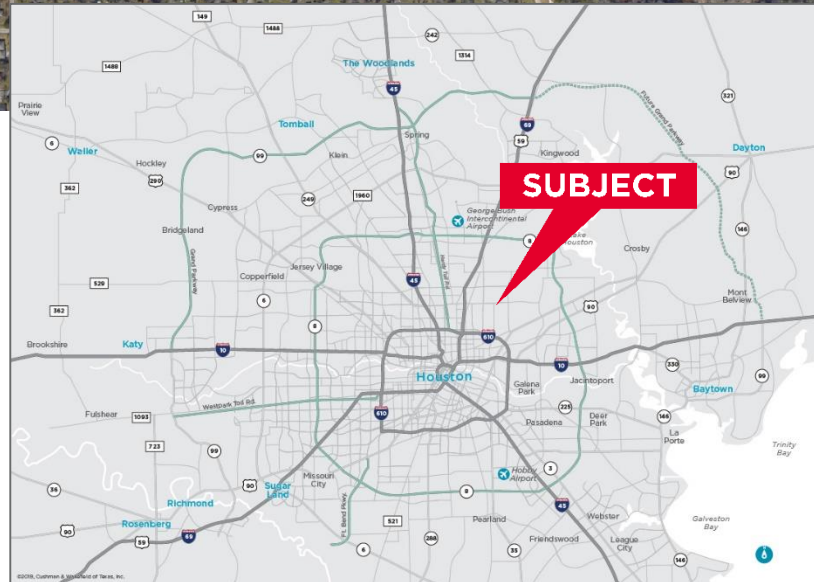
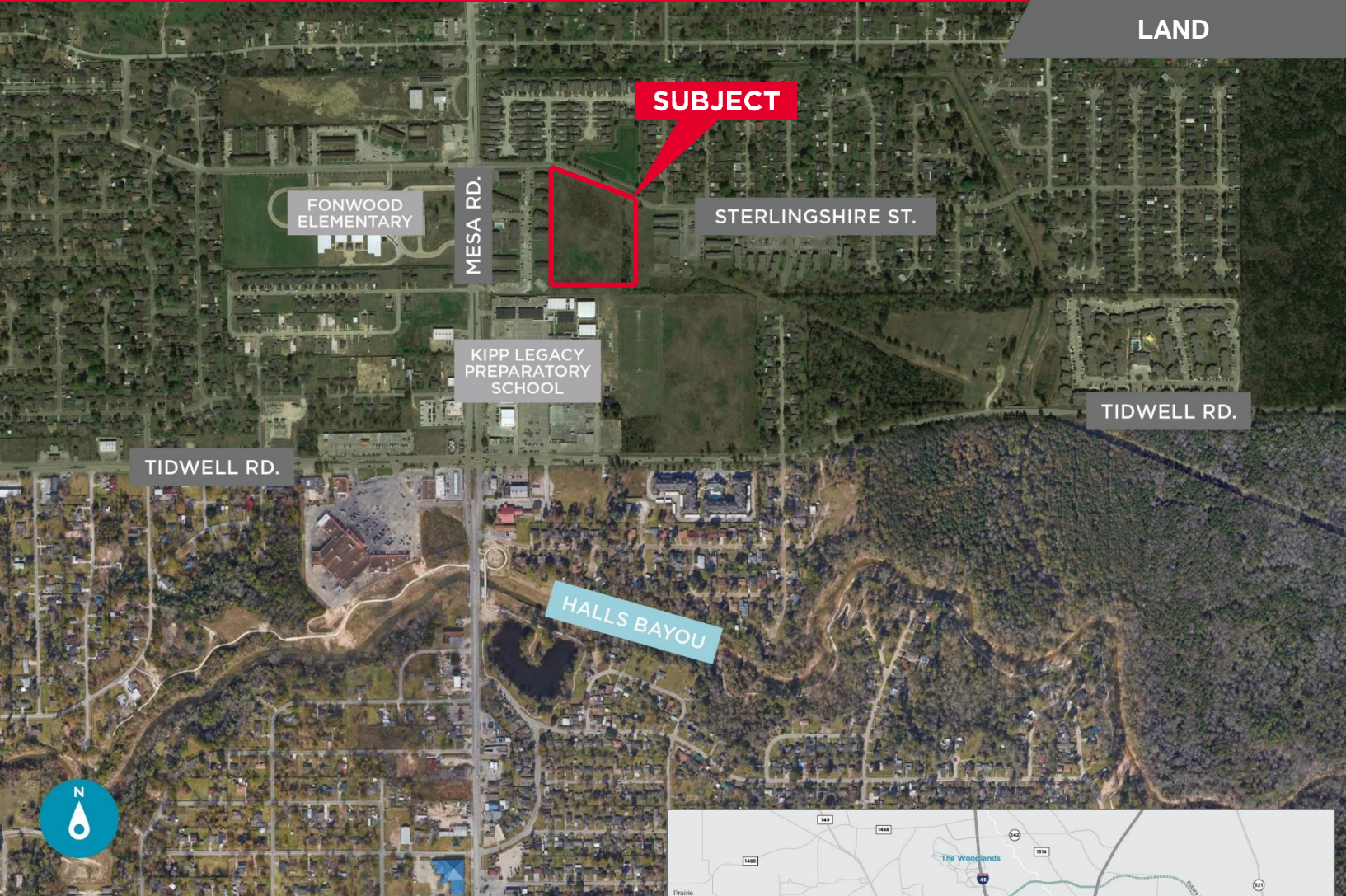


±6.7 ACRES

Tidwell, Just East of Mesa Rd.

Houston, TX 77078

LAND

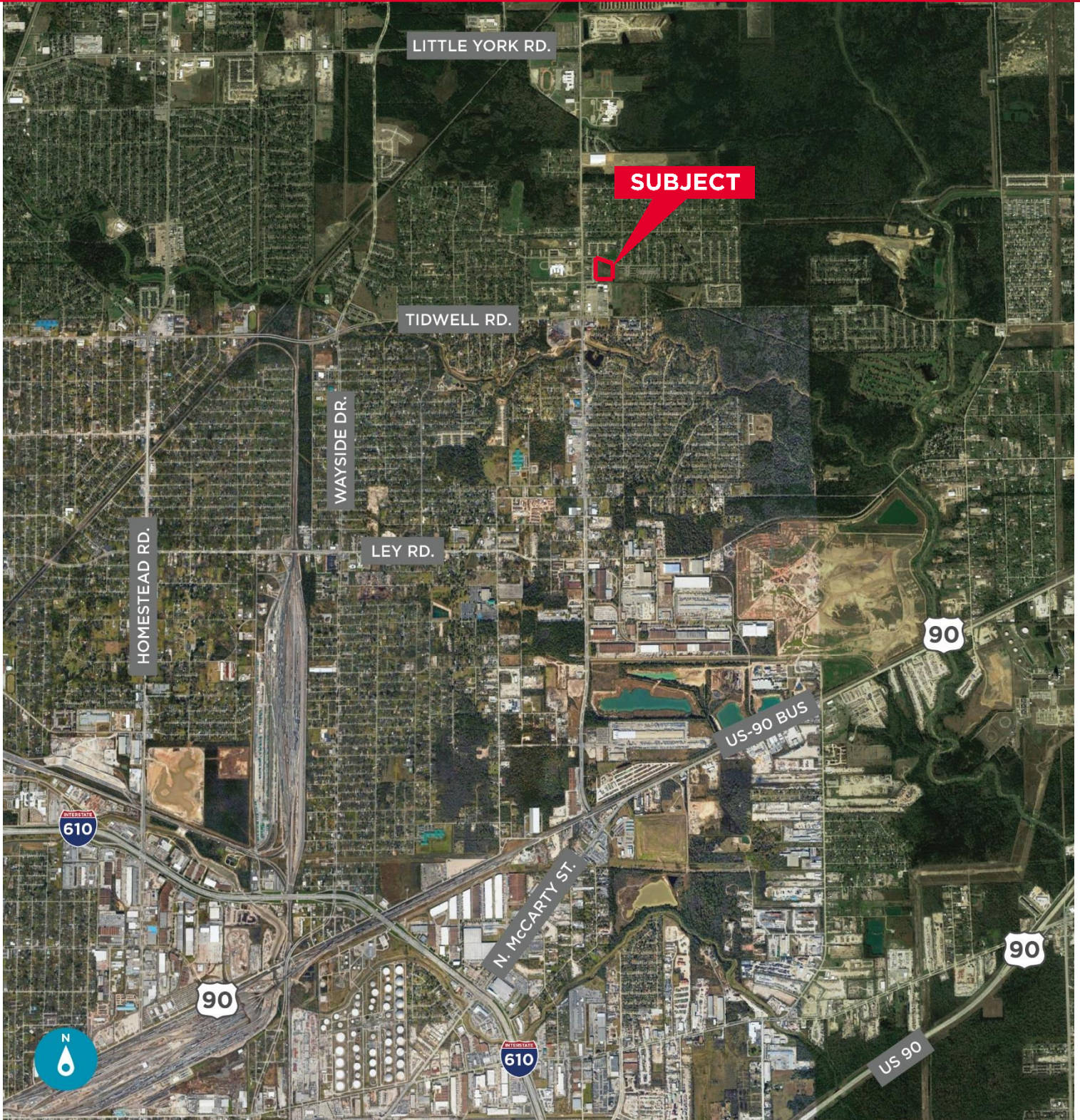


- ±6.7 acres
- Utilities on Tidwell
- Adjacent to KIPP K-8
- Excellent multi-family or single-family development opportunity
- Not in flood plain
- \$3.00/sq. ft.

For more information, please contact:

Stephen Schneidau
Senior Director
+1 713 963 2822
Stephen.schneidau@cushwake.com

CUSHMAN & WAKEFIELD OF TEXAS, INC.
1330 Post Oak Boulevard, Suite 2700
Houston, TX 77056
phone: +1 713 877 1700



For more information, please contact:

Stephen Schneidau
Senior Director
+1 713 963 2822
Stephen.schneidau@cushwake.com

CUSHMAN & WAKEFIELD OF TEXAS, INC.
1330 Post Oak Boulevard, Suite 2700
Houston, TX 77056
phone: +1 713 877 1700