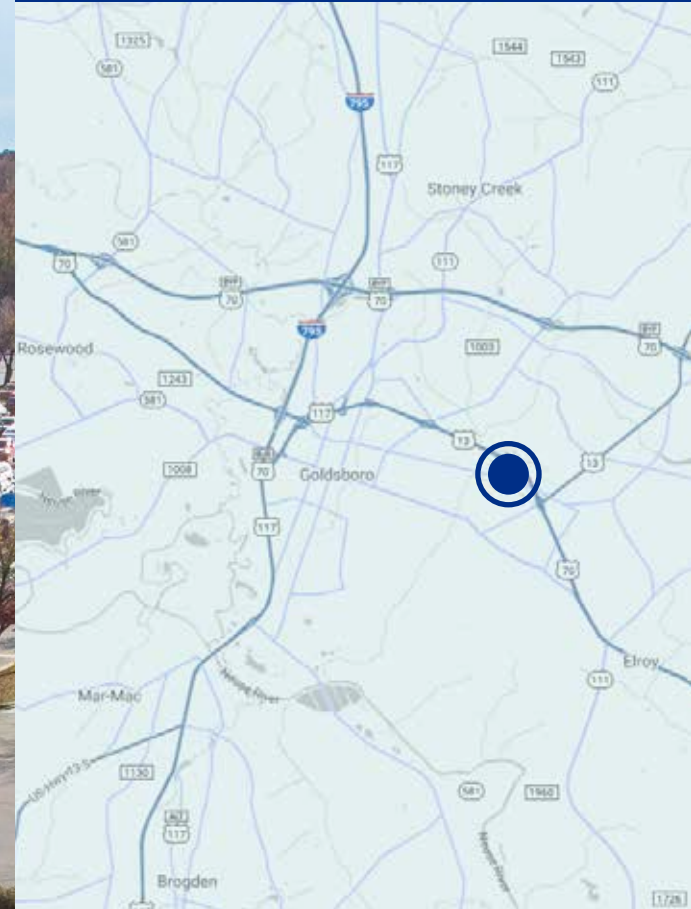


PINEWOOD SQUARE

**N. SPENCE AVE.
& US-70**

GOLDSBORO, NC 27534



BRIAN GRABOWSKI

bgrabowski@trademarkproperties.com

919.227.5698 direct 919.349.3569 mobile

1001 Wade Avenue, Suite 300

Raleigh, NC 27605

trademarkproperties.com

919.782.5552

ABOUT THE PROPERTY

- Located at the interchange of N. Spence Avenue & US-70
- Excellent visibility with a full service traffic light at main entrance
- Part of the retail hub of Wayne County
- Easy access to Seymour Johnson Air Force Base and growing suburbs
- The success of the center is indicated in tenant sales, with several tenants consistently in percentage rent



UNIT	TENANT	SF
A	Walmart	153,755
1	Jewelry Unlimited	2,046
3	Dollar Tree	11,506
8	Best Mart	3,000
10	Brooklyn Pizzeria	2,400
12	Sally Beauty Supply	1,600
14	GameStop	1,822
16	Nail Salon	1,378
18	Century Finance	2,400
20	Tobacco Station	1,440
21	Cricket Mobile	1,360
22	Available (Former Great Clips)	1,360
24	CDJ Express	1,360



BRIAN GRABOWSKI

bgrabowski@trademarkproperties.com

919.227.5698 direct 919.349.3569 mobile

1001 Wade Avenue, Suite 300, Raleigh, NC 27605 • trademarkproperties.com • 919.782.5552

The information contained herein was obtained from sources believed reliable; however, TradeMark Properties makes no guarantees, warranties, or representations as to the completeness or accuracy thereof. The presentation of this property is submitted subject to errors, omissions, changes of price or conditions prior to sale or lease, or withdrawal without notice.

LOCATION AERIAL



BRIAN GRABOWSKI

bgrabowski@trademarkproperties.com

919.227.5698 direct 919.349.3569 mobile

1001 Wade Avenue, Suite 300, Raleigh, NC 27605 • trademarkproperties.com • 919.782.5552

The information contained herein was obtained from sources believed reliable; however, TradeMark Properties makes no guarantees, warranties, or representations as to the completeness or accuracy thereof. The presentation of this property is submitted subject to errors, omissions, changes of price or conditions prior to sale or lease, or withdrawal without notice.