



1710 North Franklin Street

Pittsburgh, PA 15233



Building & Property Size

- 47,000 SF
- 1.82 Acres

Available Premises

- 40,000 SF - 1st Floor (Available 4/19)

Lease Rate

- \$6.50 - \$7.50/SF NNN
- Real Estate Taxes - \$1.00/SF
- Insurance - \$0.16/SF

Property Highlights

- Eight (8) covered loading docks - six (6) with seals and levelers
- One (1) grade level door (12' x 11')
- 19' clear height in warehouse
- 7,000 SF office area / HVAC in office
- Gas fired radiant heat in warehouse / 240V 3p power / Sprinkler system
- Security system with video monitoring (Sonitrol)
- Exterior signage and monument signage available
- New T5 high output warehouse lighting
- Back-up emergency generator (natural gas)
- Ample free parking
- Excellent access to I-376, Parkway North, Route 28 and Route 51 via Route 65

For more information please contact:

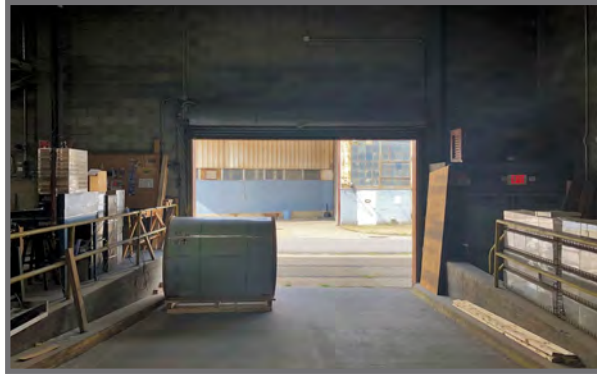
Joseph F. Tosi
Senior Vice President
Oxford Realty Services, Inc.
412.261.0200, ext 3471
jtosi@oxfordrealtyservices.com



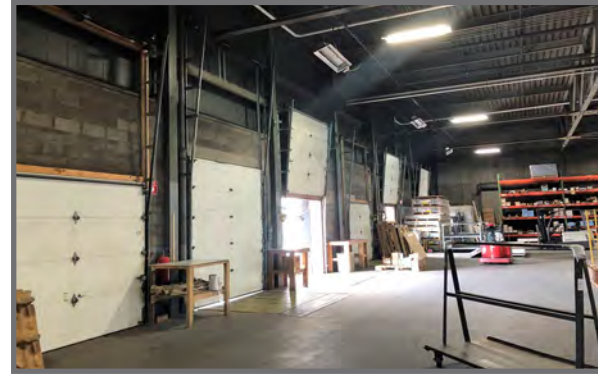
One Oxford Centre
301 Grant Street - Suite 400
Pittsburgh, PA 15219
www.oxfordrealtyservices.com

Although all information furnished regarding property for sale, rental or financing is from sources deemed reliable, such information has not been verified, and no express representation is made nor is any to be implied as to the accuracy thereof, and it is submitted subject to errors, omissions, change of price, rental or other conditions, prior sale, lease or financing, or withdrawal without notice. Rental terms and all dimensions are approximate and specifications are subject to change without notice. Oxford Realty Services, Inc., an independent real estate services company.

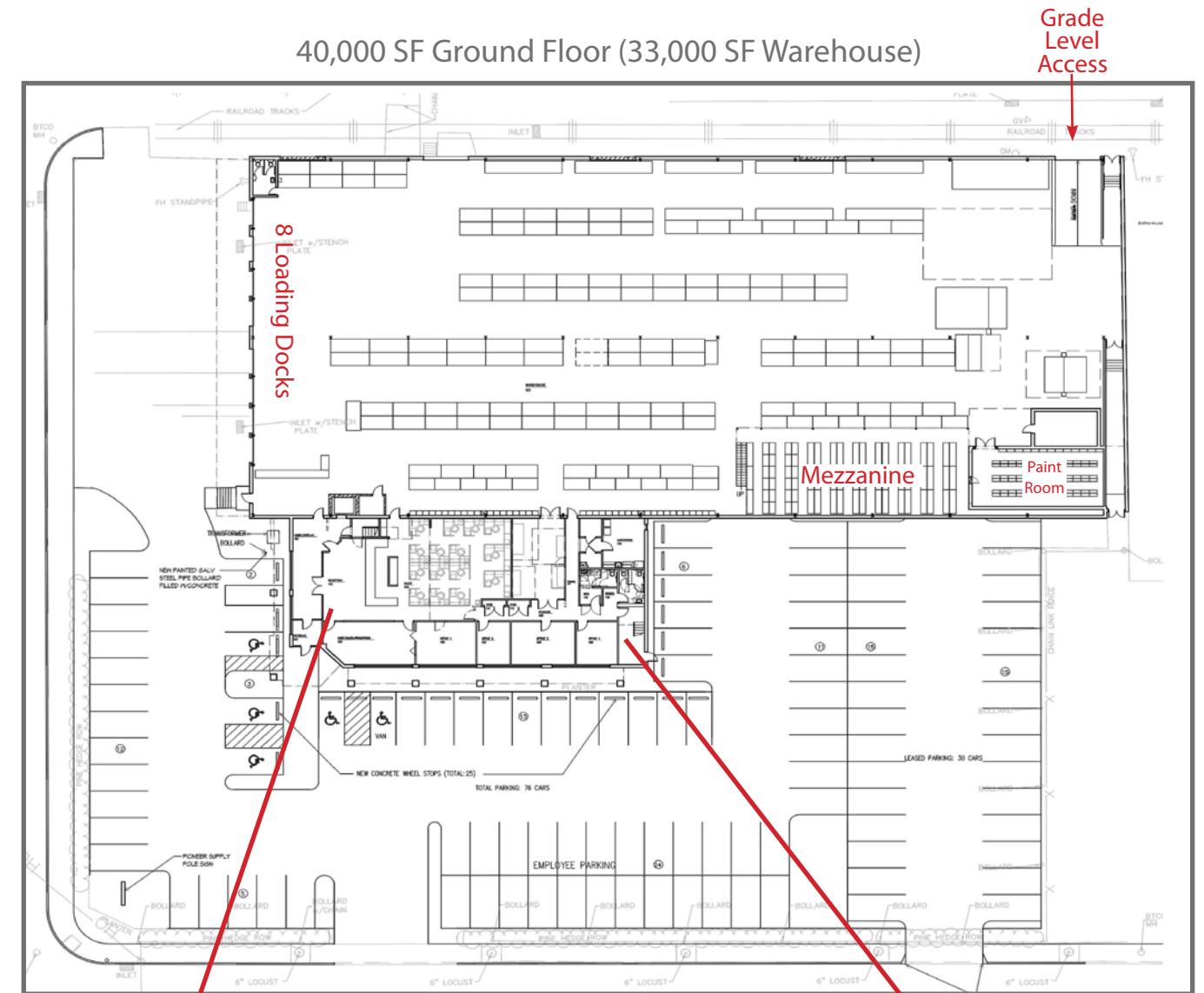
Large Grade Level Door (12'x11')



8 Loading Docks



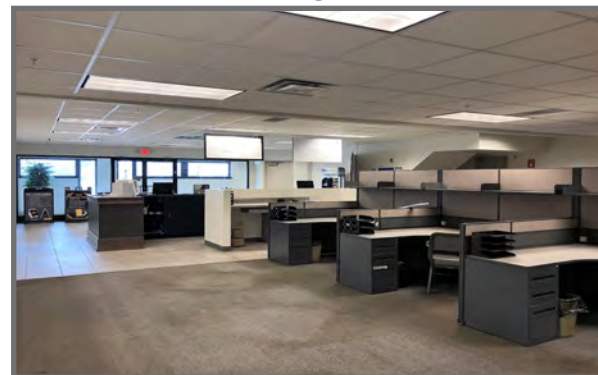
40,000 SF Ground Floor (33,000 SF Warehouse)



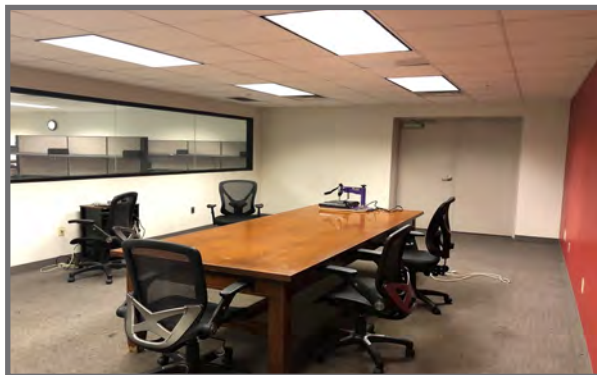
Truck Court



7,000 SF Office Contiguous to Warehouse



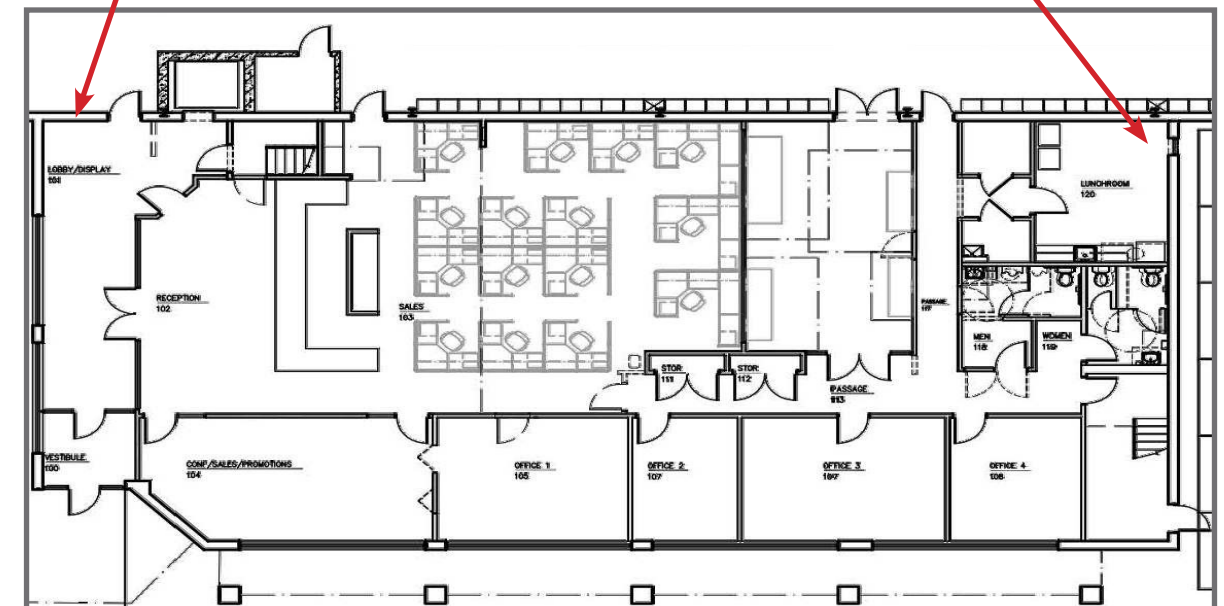
Conference Room



Kitchen Area



7,000 SF Office



Open Warehouse Area



Open Warehouse Area

