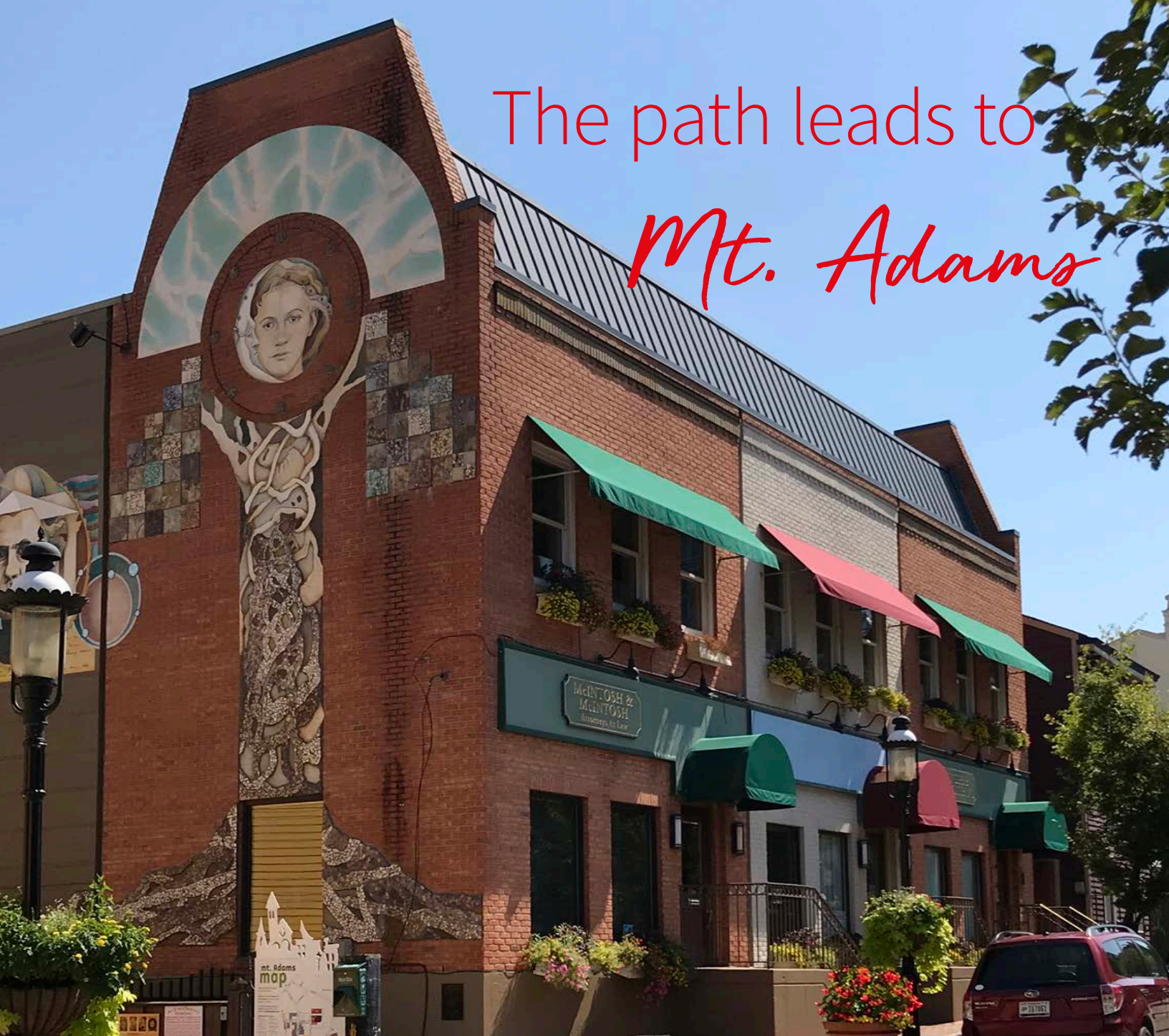


The path leads to  
*Mt. Adams*



*For Lease*

**Prime Mt. Adams office location**

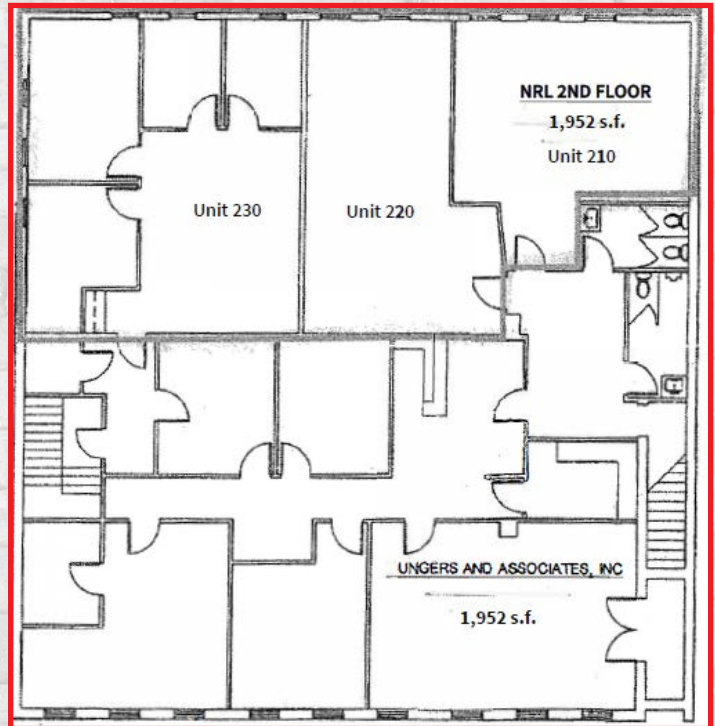
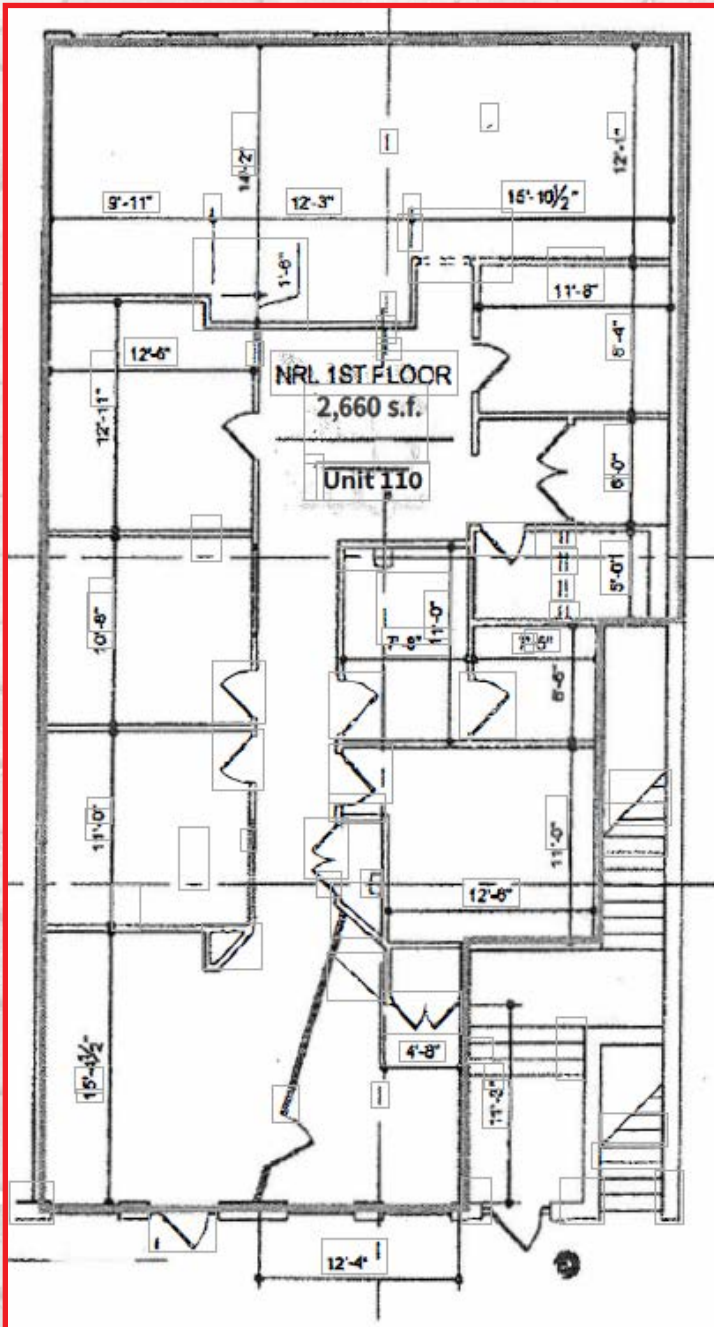
- Up to 6,564 s.f. available on first and second floors
- Charming Mt. Adams location provides ideal office setting
- Covered on-site parking
- Fitness center available to tenants
- Wonderful amenities of Mt. Adams
- Close proximity to downtown, Columbia Parkway and I-71
- Towne Properties ownership and management

1136 St. Gregory Street  
Cincinnati, Ohio

David Ottenjohn  
+1 513 252 2160  
david.ottenjohn@am.jll.com



# The path leads to... *Ideal Floorplans*



## **Available Space:**

**First Floor: 2,660 s.f.**

**Second Floor: 3,904 s.f.**

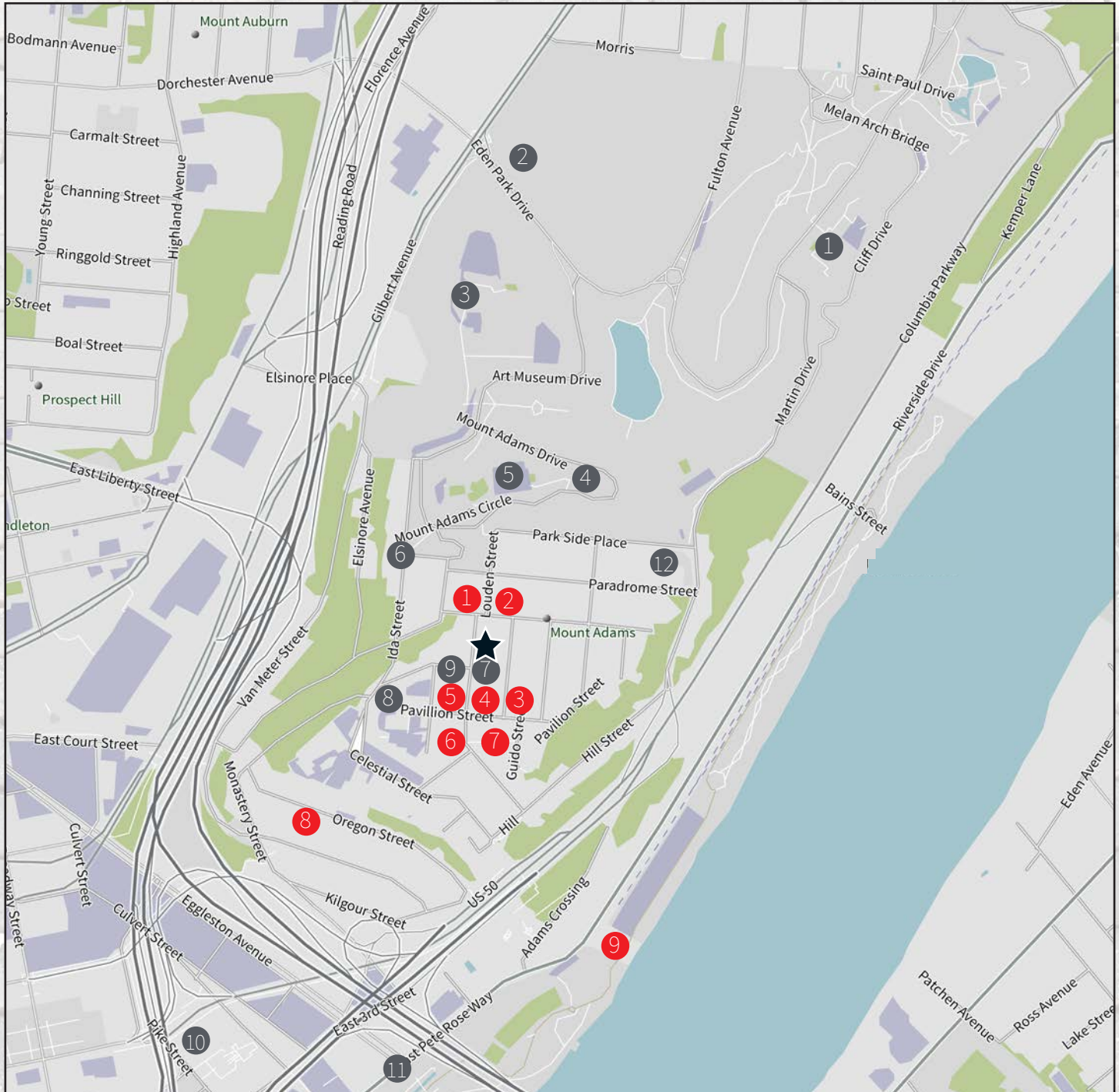
The path leads to... *Charming Space*



# The path leads to... *Amenities*



# The path leads to... *Amenities*



## Dining

- ① The Blind Lemon
- ② Mt. Adams Bar & Grill
- ③ Crowley's Highland House Cafe
- ④ Monk's Cove
- ⑤ Bow Tie Cafe
- ⑥ Bub's Pizza Bar
- ⑦ Mt. Adams Pavilion
- ⑧ City View Tavern
- ⑨ Montgomery Inn  
The Boathouse

## Arts, Entertainment and Retail

- ① Krohn Conservatory
- ② Eden Park
- ③ Cincinnati Art Museum
- ④ Mt. Adams Pool
- ⑤ Playhouse in the Park
- ⑥ Best of New York
- ⑦ United Dairy Farmers
- ⑧ The Monastery Event Center
- ⑨ North Side Bank
- ⑩ Taft Museum of Art
- ⑪ Sawyer Point Park
- ⑫ Cincinnati Art Club Center

★ 1136 St. Gregory Street

The path leads to...

*1136 St. Gregory Street*

**1136 St. Gregory Street  
Cincinnati, Ohio**

---

**David Ottenjohn**  
+1 513 252 2160  
david.ottenjohn@am.jll.com

---

