

39 W LEXINGTON, BALTIMORE, MD 21201

850 SF OF GROUND-FLOOR READY TO LEASE



### GROUND-FLOOR LEASE IN HISTORIC 39 W LEXINGTON!

- 850 SF of ground-floor office available in luxurious and historic 39 W Lexington!
- Prominent & dedicated entry just left of main entrance, visible to busy pedestrian traffic and to all building tenants.
- Lavishly appointed office ready for occupancy. Other non-office uses considered.
- Next to main entry for over 180 apartment tenants in nearly 100% occupied Class A building!
- On-site property management.



**Coleman Tirone**  
443.921.9328  
ctirone@troutdaniel.com

**Gilbert R. Trout**  
443.921.9332  
gtrout@troutdaniel.com

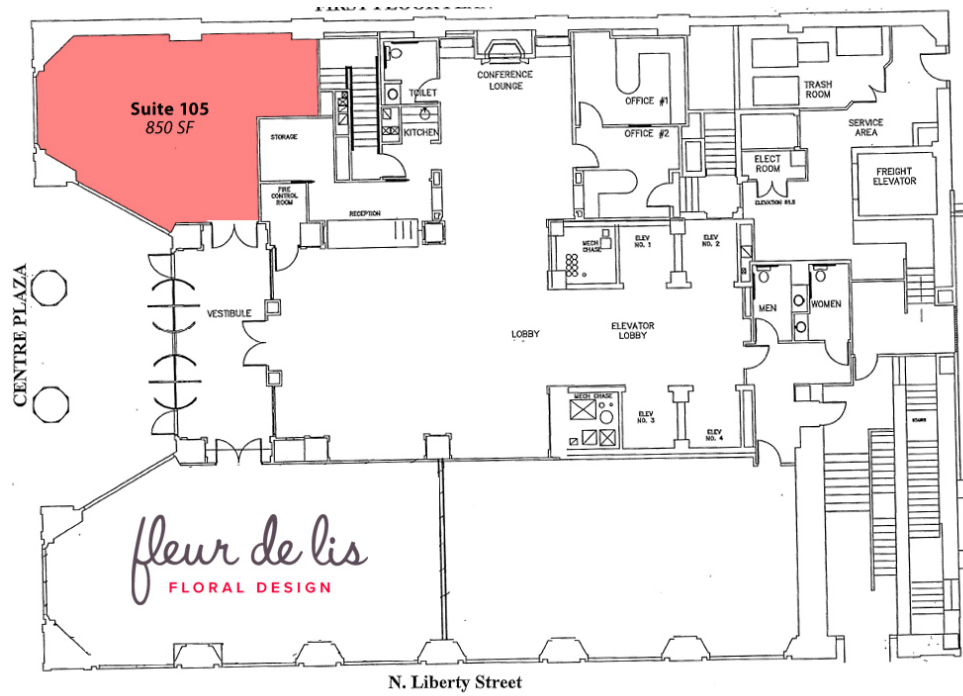
The information contained in this marketing brochure has been obtained from sources we believe to be reliable; however, Trout Daniel & Associates LLC has not verified, and will not verify any of the information contained herein, nor has Trout Daniel & Associates LLC conducted any investigation regarding these matters and makes no warranty or representation whatsoever regarding the accuracy or completeness of the information provided. An agent indicated by an asterisk (\*) has a direct or indirect ownership interest in this property.

39 W LEXINGTON, BALTIMORE, MD 21201

850 SF OF GROUND-FLOOR READY TO LEASE



FLOOR PLANS



Suite 105 - Available



Office view



Office entrance - Easy accessibility, attached to lobby

Coleman Tirone

443.921.9328

ctirone@troutdaniel.com

Gilbert R. Trout

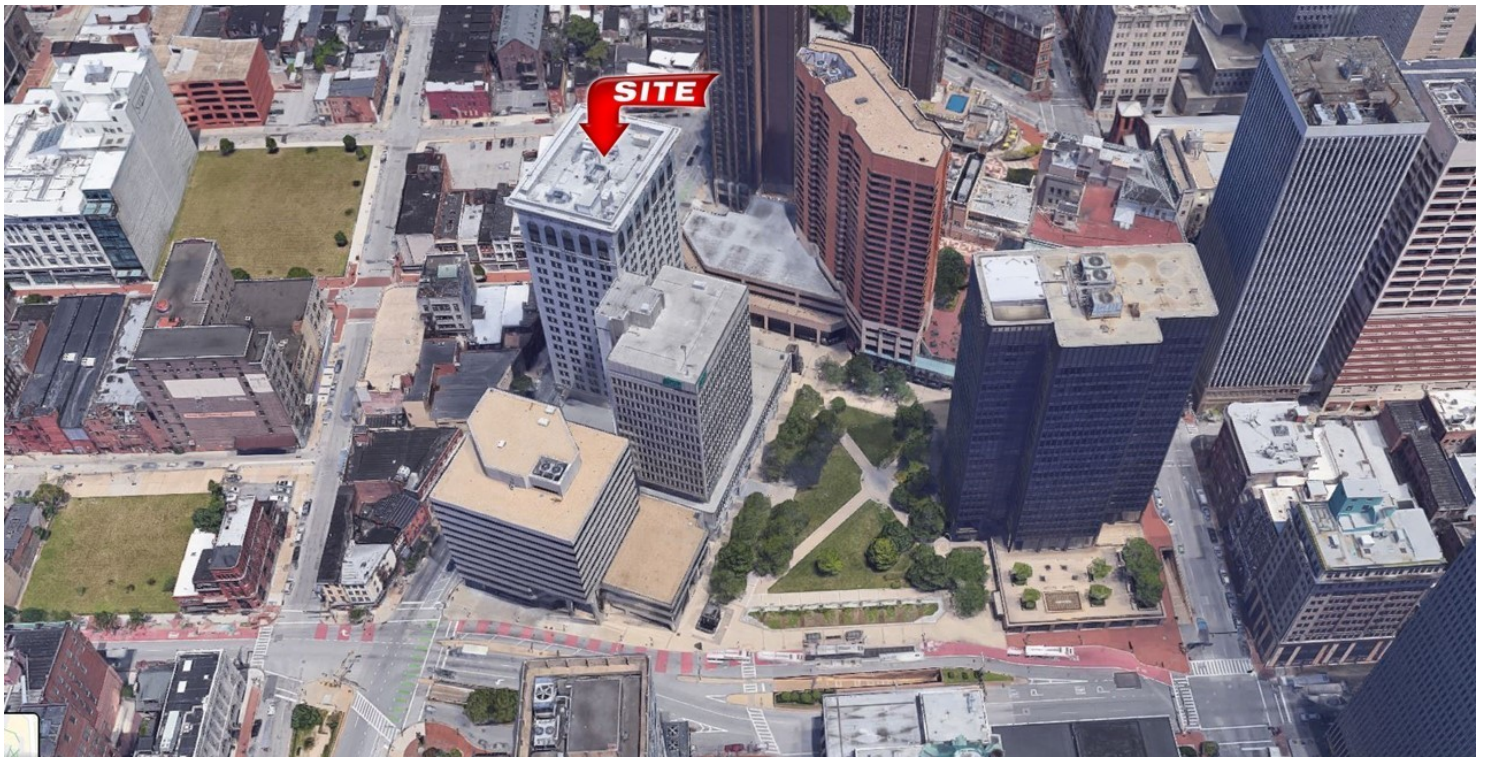
443.921.9332

gtrout@troutdaniel.com

The information contained in this marketing brochure has been obtained from sources we believe to be reliable; however, Trout Daniel & Associates LLC has not verified, and will not verify any of the information contained herein, nor has Trout Daniel & Associates LLC conducted any investigation regarding these matters and makes no warranty or representation whatsoever regarding the accuracy or completeness of the information provided. An agent indicated by an asterisk (\*) has a direct or indirect ownership interest in this property.

39 W LEXINGTON, BALTIMORE, MD 21201

39 W LEXINGTON



**Coleman Tirone**

443.921.9328

[ctirone@troutdaniel.com](mailto:ctirone@troutdaniel.com)

**Gilbert R. Trout**

443.921.9332

[gtrout@troutdaniel.com](mailto:gtrout@troutdaniel.com)

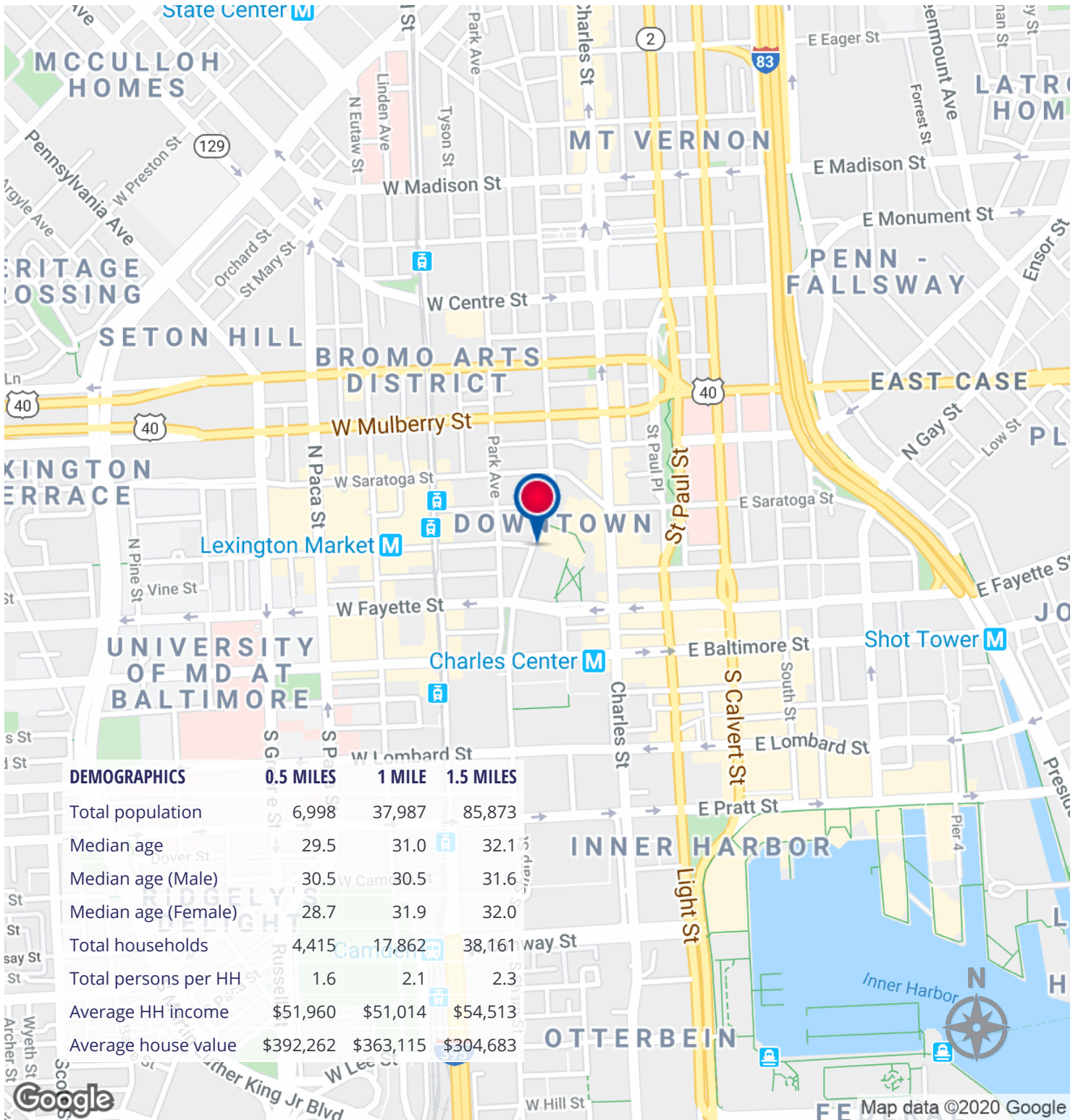
The information contained in this marketing brochure has been obtained from sources we believe to be reliable; however, Trout Daniel & Associates LLC has not verified, and will not verify any of the information contained herein, nor has Trout Daniel & Associates LLC conducted any investigation regarding these matters and makes no warranty or representation whatsoever regarding the accuracy or completeness of the information provided. An agent indicated by an asterisk (\*) has a direct or indirect ownership interest in this property.

39 W LEXINGTON, BALTIMORE, MD 21201

850 SF OF GROUND-FLOOR READY TO LEASE



TROUT DANIEL & ASSOCIATES



Coleman Tirone

443.921.9328

ctirone@troutdaniel.com

Gilbert R. Trout

443.921.9332

gtrout@troutdaniel.com

The information contained in this marketing brochure has been obtained from sources we believe to be reliable; however, Trout Daniel & Associates LLC has not verified, and will not verify any of the information contained herein, nor has Trout Daniel & Associates LLC conducted any investigation regarding these matters and makes no warranty or representation whatsoever regarding the accuracy or completeness of the information provided. An agent indicated by an asterisk (\*) has a direct or indirect ownership interest in this property.