



DUBLIN VILLAGE

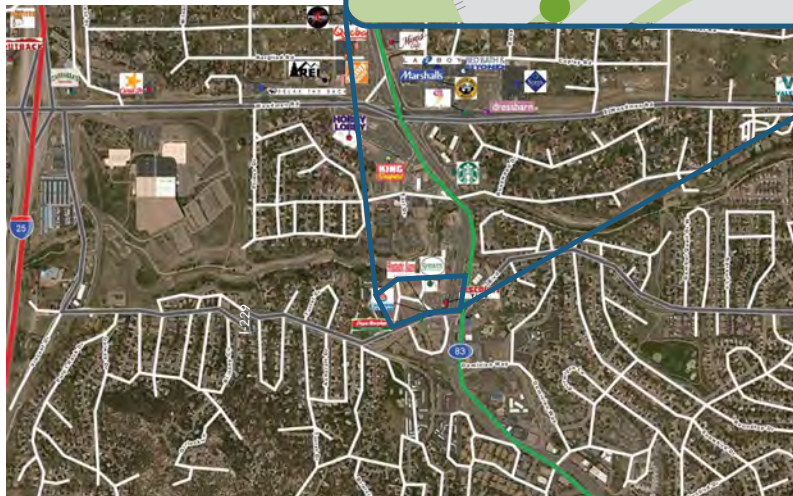
1710 DUBLIN, BLVD. - COLORADO SPRINGS, CO 80918

VACANT **OCCUPIED**

BAY 1	1,496 SF	STONEGATE HOMES
BAY 2	1,379 SF	AVAILABLE
BAY 3	1,400 SF	AVAILABLE
BAY 4	2,228 SF	CLASSIC LIQUOR
BAY 5	1,830 SF	SILVERHAWK TEA
BAY 6	1,965 SF	BOARD AND BRUSH
BAY 7	1,120 SF	BUDGET FRAMER
BAY 8	1,400 SF	DUBLIN COIN LAUNDRY
BAY 9	1,400 SF	AVAILABLE
BAY 10 -12	5,872 SF	SHERWIN WILLIAMS
BAY 13 - 14	6,032 SF	FASCINATIONS
BAY 15A	1,513 SF	AVAILABLE
BAY 15B	1,540 SF	GJ HOMES
BAY 16	1,540 SF	CRICKET
BAY 17	1,760 SF	JUN JAPANESE RESTAURANT

OWNED BY OTHERS

PIKES PEAK MOTORSPORTS	42,269 SF
SPROUTS	27,500 SF
DISCOUNT TIRE	
GREASE MONKEY	



DEMOGRAPHICS

PRIMARY MARKET RADIUS

Miles	Population	Households
1 Mile Radius	9,446	4,086
3 Mile Radius	87,146	34,890
5 Mile Radius	214,895	85,542

INCOME PER HOUSEHOLD

Miles	Average HHI	Medium HHI
1 Mile Radius	\$70,431	\$60,469
3 Mile Radius	\$79,627	\$67,655
5 Mile Radius	\$80,439	\$69,677

MEDIAN AGE

Miles	Age
1 Mile Radius	37.5
3 Mile Radius	36.3
5 Mile Radius	36.7

OTHER INFORMATION

Total Leasable SF	32,475
Parking Ratio per 1,000 SF	5:1
Traffic Count (Est. Daily Average)	4,858