

Partnership. Performance.



PROPERTY HIGHLIGHTS

**ACREAGE**  
±10.9 AC

**FLOOD PLAIN**  
None

**SCHOOL DISTRICT**  
Pasadena ISD

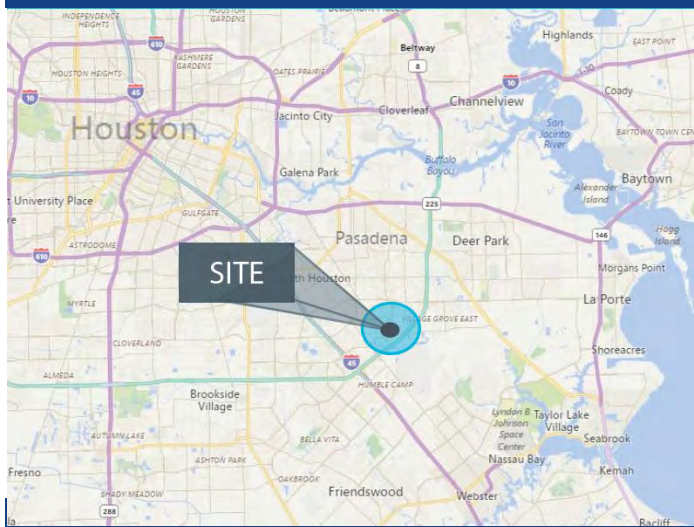
**ASKING PRICE**  
\$4.25 PSF

**PIPELINES**  
Pipelines bisect the Property

**UTILITIES**  
Available via City of Houston

**COMMENTS**  
Ellington Airport Land Use - Tier II  
Residential use permitted

Genoa Red Bluff Rd  
Houston | TX



**TOMMY LEBLANC** | Principal  
Avison Young  
D 713.993.7178  
tommy.leblanc@avisonyoung.com

**JOHN-MICHAEL KAMEL** | Associate  
Avison Young  
D 713.993.7157  
jm.kamel@avisonyoung.com

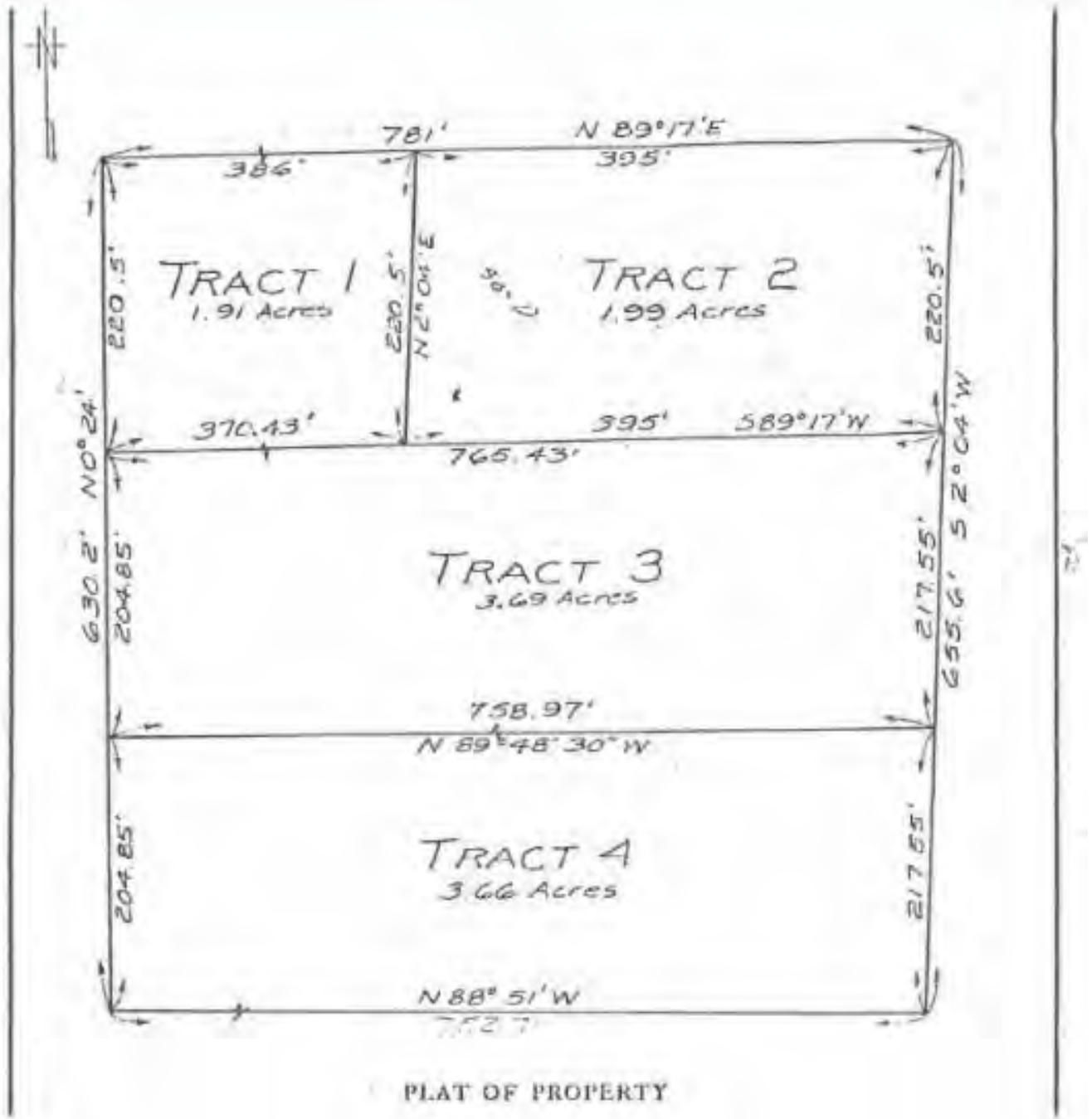


FOR SALE

Partnership. Performance.



*\* Tract has been reduced by at least 0.302 acres by the ROW Department \**



*\* Tract has been reduced by at least 0.302 acres by the ROW Department \**