

# 66 Bovet



**James Lees**  
602.769.3520  
jlees@kiddermathews.com  
LIC #00683028

**Sandy Rodriguez**  
650.769.3528  
sandy@kiddermathews.com  
LIC #01249030



66 BOVET RD, SAN MATEO, CA

# 66 Bovet



The building exterior was recently renovated with new hardscape and landscape, paint and stonework, a new monument sign, exterior lighting, and a deck with seating and wi-fi. The building lobby was completely renovated with new flooring, ceiling, lighting, new electronic tenant directory, seating, water feature and artwork.



**James Lees**  
602.769.3520  
jlees@kiddermathews.com  
LIC #00683028

**Sandy Rodriguez**  
650.769.3528  
sandy@kiddermathews.com  
LIC #01249030

**km Kidder Mathews** kiddermathews.com

This information supplied herein is from sources we deem reliable. It is provided without any representation, warranty or guarantee, expressed or implied as to its accuracy. Prospective Buyer or Tenant should conduct an independent investigation and verification of all matters deemed to be material, including, but not limited to, statements of income and expenses. Consult your attorney, accountant, or other professional advisor.



# 66 BOVET RD, SAN MATEO, CA

# 66 Bovet



66 Bovet is located in the heart of the San Francisco Peninsula office market, in a highly desirable area known as the "92/101 corridor". Companies located here have the ability to attract and retain employees from a wide labor pool. This location provides immediate access to Highway 101 and Interstate 280 via Highway 92, which provides access from the East Bay (San Mateo Bridge) and the coast. San Francisco International Airport is a short 15 minute drive away. The Hayward Park CalTrain station is within easy walking distance. Numerous dining and other amenities are within walking distance or a short drive.

**James Lees**  
602.769.3520  
jlees@kiddermathews.com  
LIC #00683028

**Sandy Rodriguez**  
650.769.3528  
sandy@kiddermathews.com  
LIC #01249030

**km Kidder Mathews** kiddermathews.com

# 66 Bovet

## Availabilities

<b>SUITE 200</b>	±3,084 RSF	To be improved to new building standards* with conference room, 4 private offices, kitchen, storage and open area
<b>SUITE 250</b>	±1,843 RSF	Newly improved to new building standards* with conference room, 2 private offices, kitchen, storage and open area
<b>SUITE 300</b>	±2,709 RSF	To be improved to new building standards* with conference room, 3 private offices, kitchen, server, storage and open area
<b>SUITE 353</b>	±1,979 RSF	2 private offices and open area
<b>SUITE 370</b>	±763 RSF	2 private offices and open area

\*New building standards include LED lighting, full-height brushed aluminum frames with sidelights and maple doors and carpet tile



**James Lees**  
602.769.3520  
jlees@kiddermathews.com  
LIC #00683028

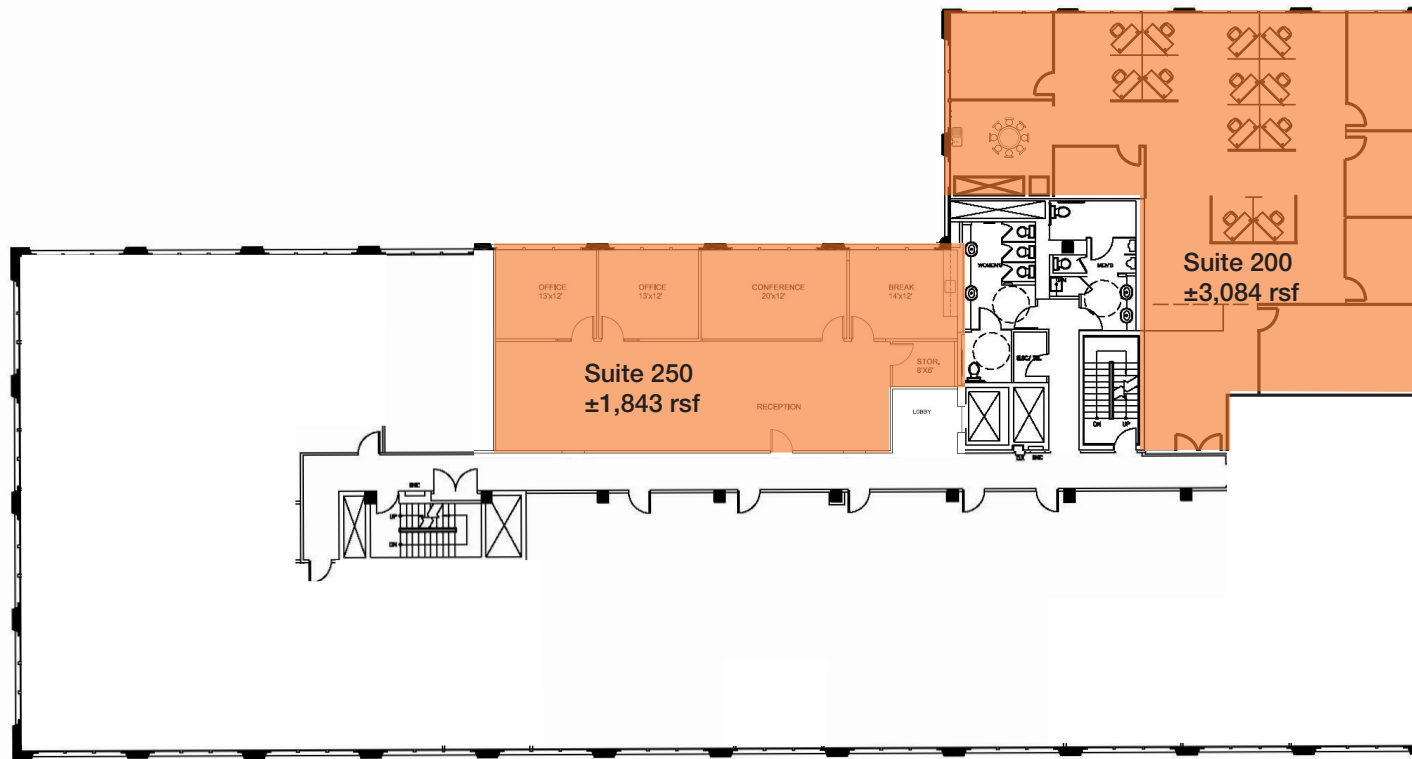
**Sandy Rodriguez**  
650.769.3528  
sandy@kiddermathews.com  
LIC #01249030

 **Kidder  
Mathews** kiddermathews.com



66 BOVET RD, SAN MATEO, CA

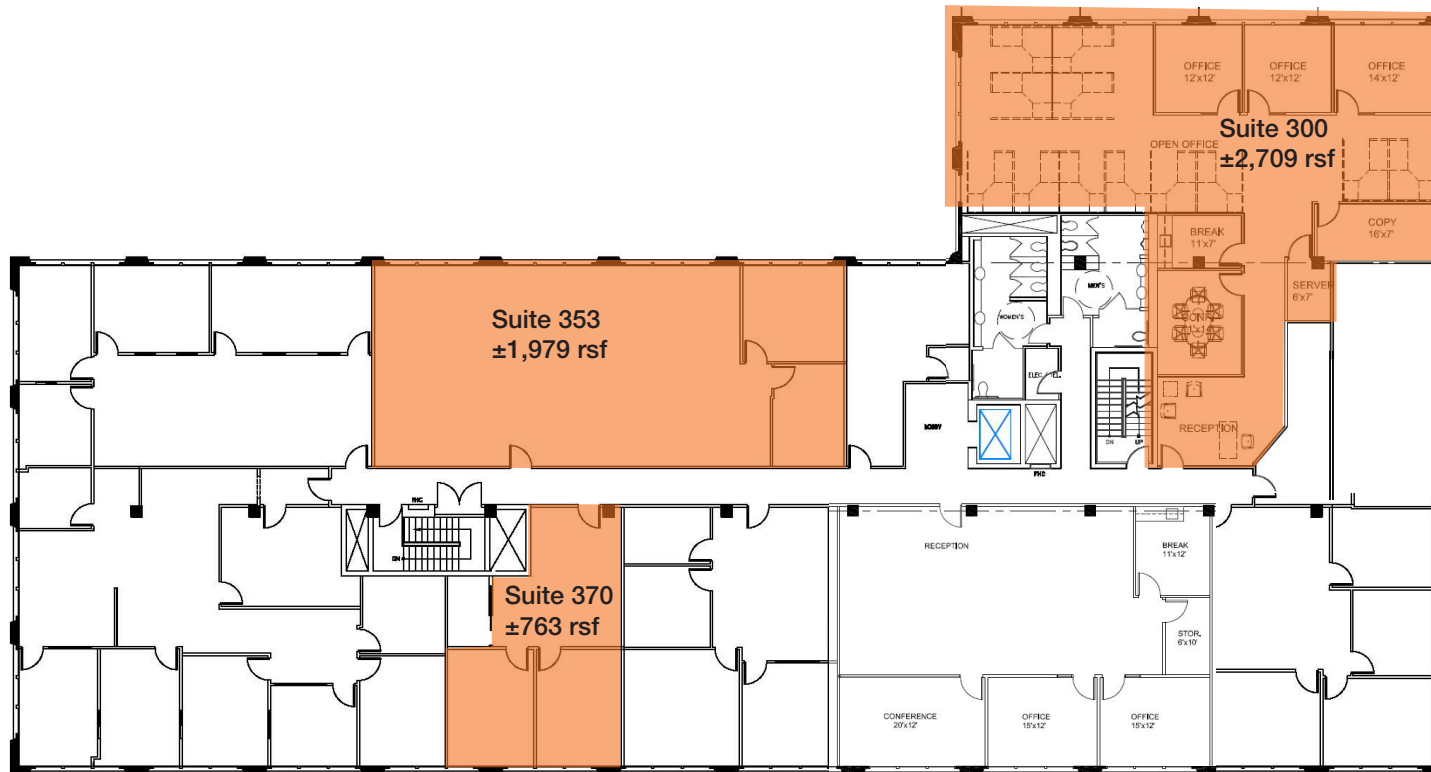
# 66 Bovet



**James Lees**  
602.769.3520  
jlees@kiddermathews.com  
LIC #00683028

**Sandy Rodriguez**  
650.769.3528  
sandy@kiddermathews.com  
LIC #01249030

**km Kidder Mathews** kiddermathews.com



**James Lees**  
602.769.3520  
jlees@kiddermathews.com  
LIC #00683028

**Sandy Rodriguez**  
650.769.3528  
sandy@kiddermathews.com  
LIC #01249030

**km Kidder Mathews** [kiddermathews.com](http://kiddermathews.com)