



AVAILABLE FOR LEASE

910 Kimberly Drive

Carol Stream, IL



For more information, please contact:

Britt Casey
Vice Chairman
+1 847 518 3280
britt.casey@cushwake.com

Al Caruana
Senior Director
+1 847 720 1326
al.caruana@cushwake.com

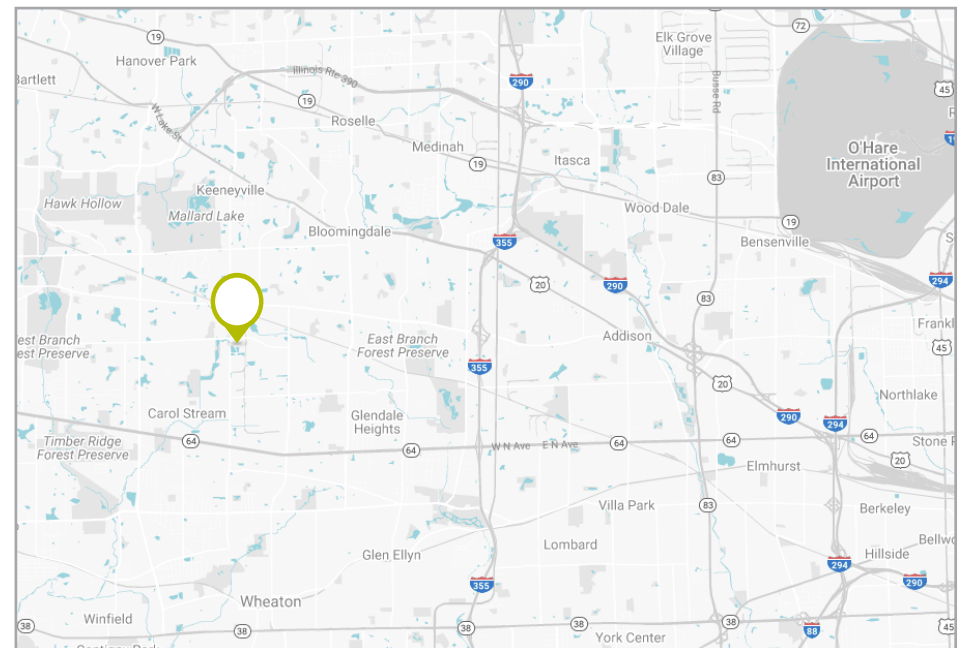
www.cushmanwakefield.com

90,773 SF Available For Lease

Asking Lease Rate: \$4.95 p.s.f. net

Property Highlights

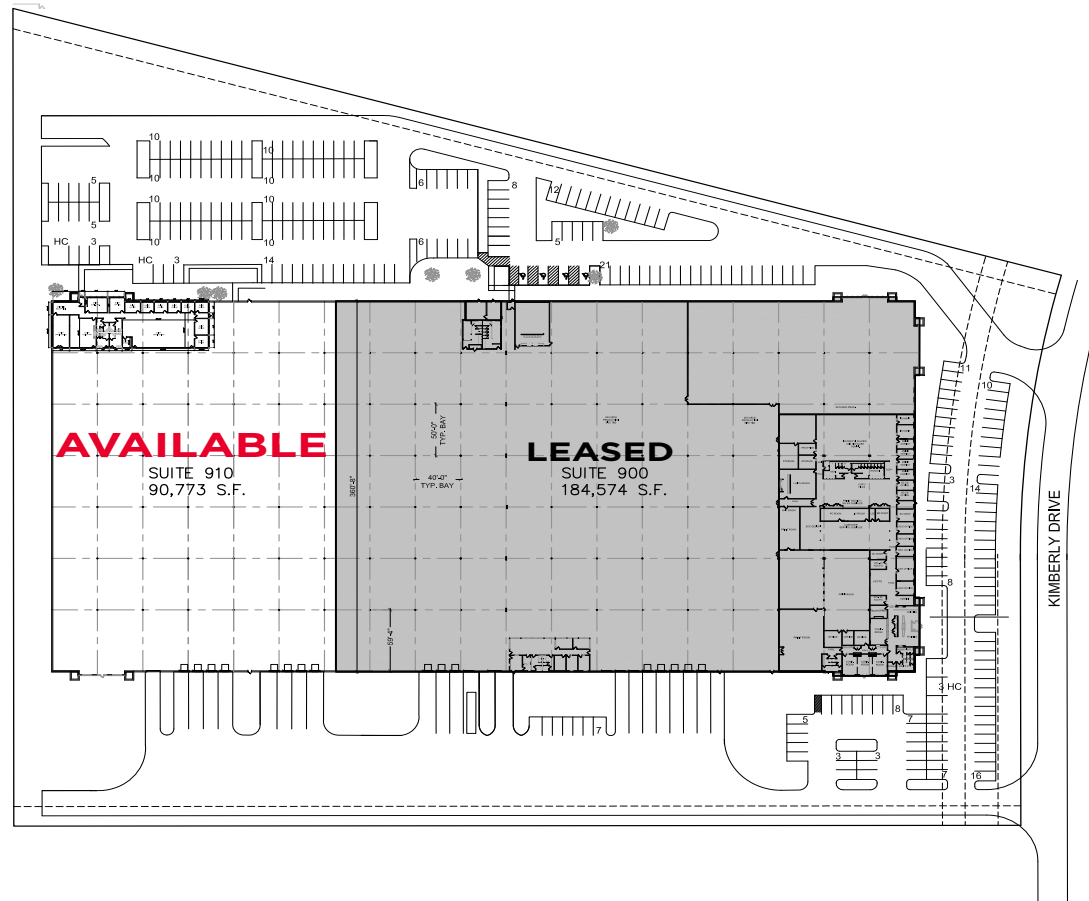

Available Space	90,773 SF
Office Size	6,577 SF
Building Size	275,347 SF
Truck Docks	8 exterior docks equipped with levelers, seals, lights (expandable)
Drive-in Doors	One (12' x 14') drive-in door
Bay Sizes	40' x 50' 40' x 60' staging bay
Clear Height	30' clear
Sprinklers	ESFR System
Power	800 amps, 480 volt, 3-phase
Rail Service	Canadian National (potential)
Heating	Positive Pressure Units
Parking	29 car parking (expandable)
Zoning	I - Industrial District
Real Estate Taxes	\$1.34 p.s.f.
CAM	\$0.60 p.s.f.



For more information, please contact:

Britt Casey
Vice Chairman
+1 847 518 3280
britt.casey@cushwake.com

Al Caruana
Senior Director
+1 847 720 1326
al.caruana@cushwake.com

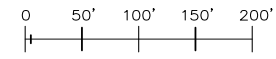



A+M ARCHITECTS, LLC
40 Lansdowne Parkway, Suite 3
Howthorne Woods, Illinois 60047
TEL: 847.726.9517
FAX: 847.726.9516



**CUSHMAN &
WAKEFIELD**

910 KIMBERLY DR.
CAROL STREAM, IL



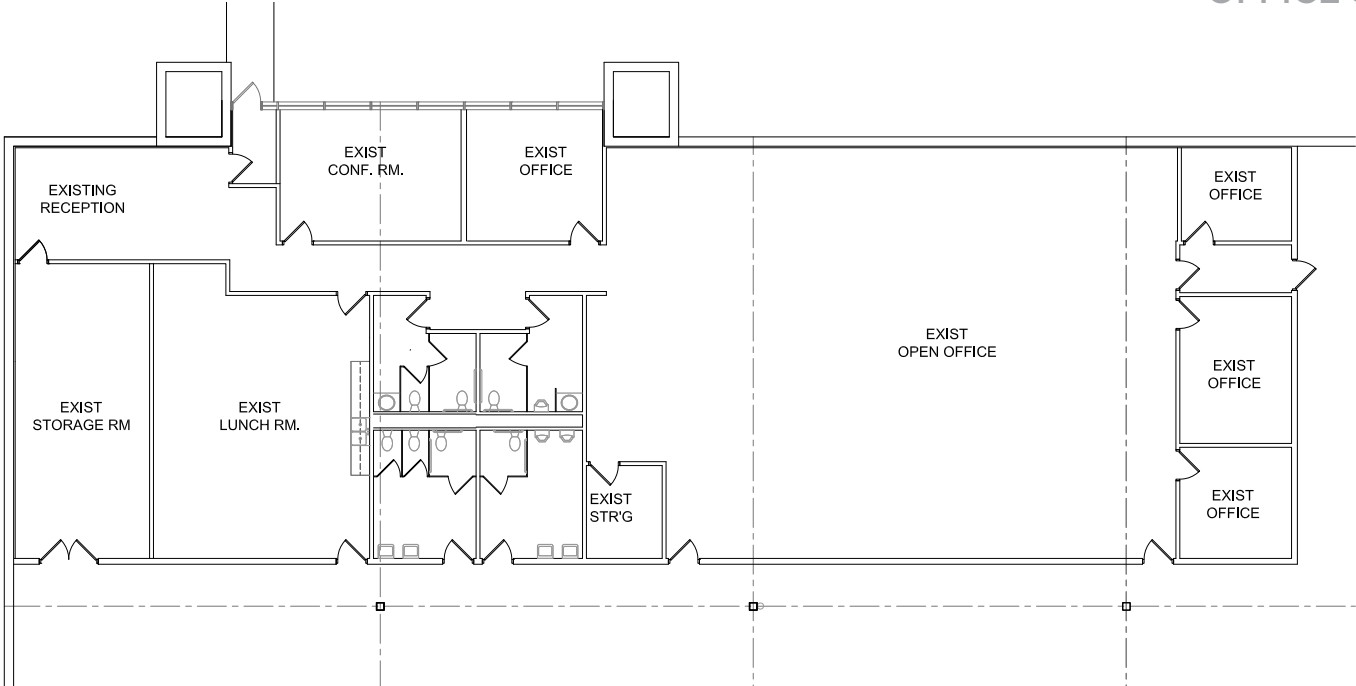
Date: 02-10-17
Dwg: 17-007
Drawn by: STAFF
© 2017 A+M Architects, LLC

For more information, please contact:

Britt Casey
Vice Chairman
+1 847 518 3280
britt.casey@cushwake.com

Al Caruana
Senior Director
+1 847 720 1326
al.caruana@cushwake.com

OFFICE SIZE: 6,577 SQ. FT.



For more information, please contact:

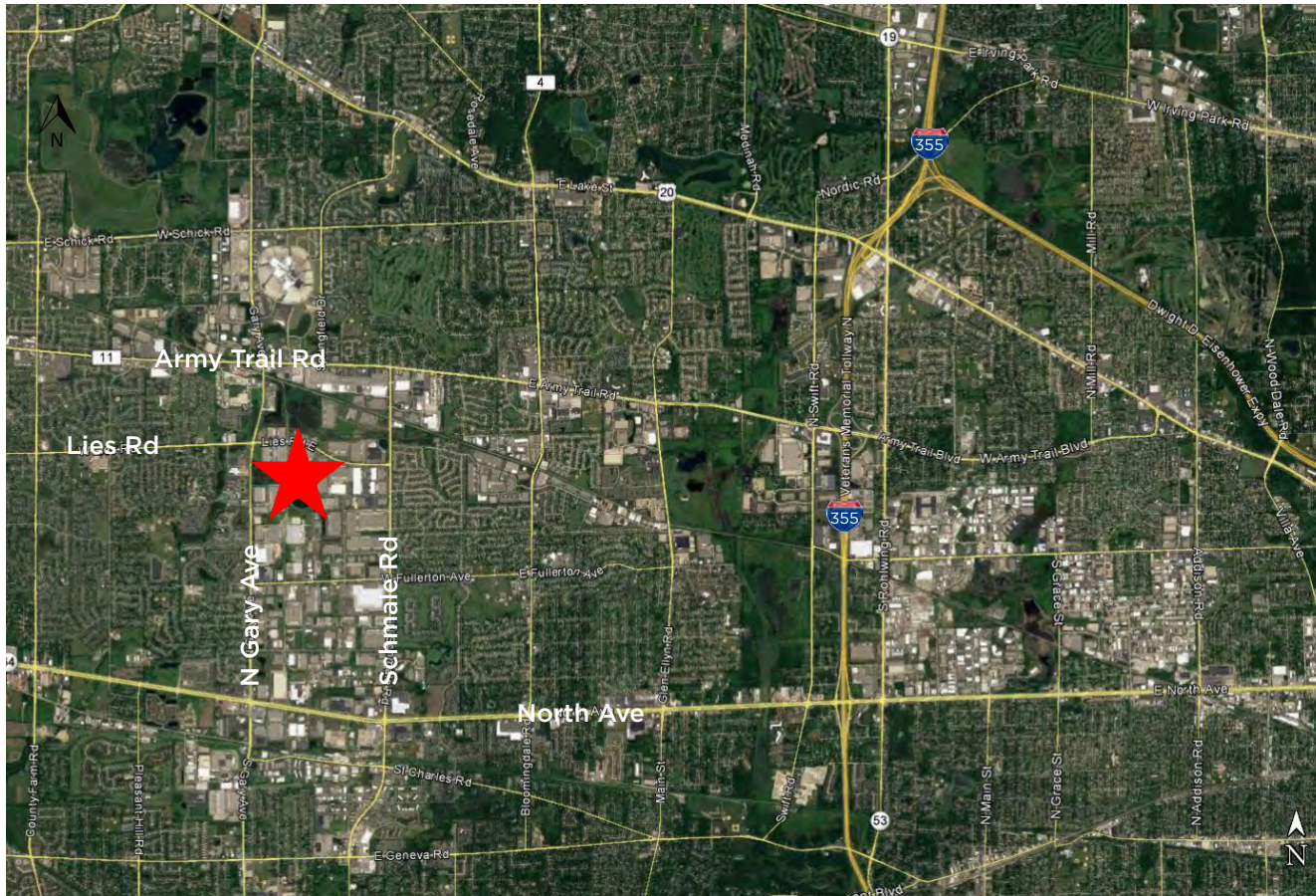
Britt Casey
Vice Chairman
+1 847 518 3280
britt.casey@cushwake.com

Al Caruana
Senior Director
+1 847 720 1326
al.caruana@cushwake.com

910 Kimberly Drive Carol Stream, IL



Aerial Location



For more information, please contact:

Britt Casey
Vice Chairman
+1 847 518 3280
britt.casey@cushwake.com

Al Caruana
Senior Director
+1 847 720 1326
al.caruana@cushwake.com

www.cushmanwakefield.com