



RURAL/RESIDENTIAL LAND

SYLVANIA-PETERSBURG RD., OTTAWA LAKE, MI 49267

"Innovative Solutions at Work"



OFFERING SUMMARY

Sale Price: \$75,000

Lot Size: 7.0 Acres
(May be split)

Frontage: 451'

Parcel #: 5815-010-017-30

Zoning: Agricultural

County: Monroe

PROPERTY HIGHLIGHTS

- 1/4 mile N. of US 223
- West of US 23
- Near Legacy Golf Course
- In the Whiteford School District
- Good topography
- Nice surrounding home

DEMOGRAPHICS

	1 MILE	5 MILES	10 MILES
Total Households	126	3,806	72,457
Total Population	362	10,798	182,981
Average HH Income	\$69,091	\$71,693	\$75,838

The information contained herein is from sources deemed reliable, but no warranty or representation is made as to accuracy thereof. It is subject to correction of errors, omissions, change of price prior to sale or withdrawal from market, all without notice. Further, no warranty or representation is made in regard to any environmental condition that may or may not exist.

JERRY MILLER, CCIM
419.392.6835
jmillermiller@millerdanberry.com

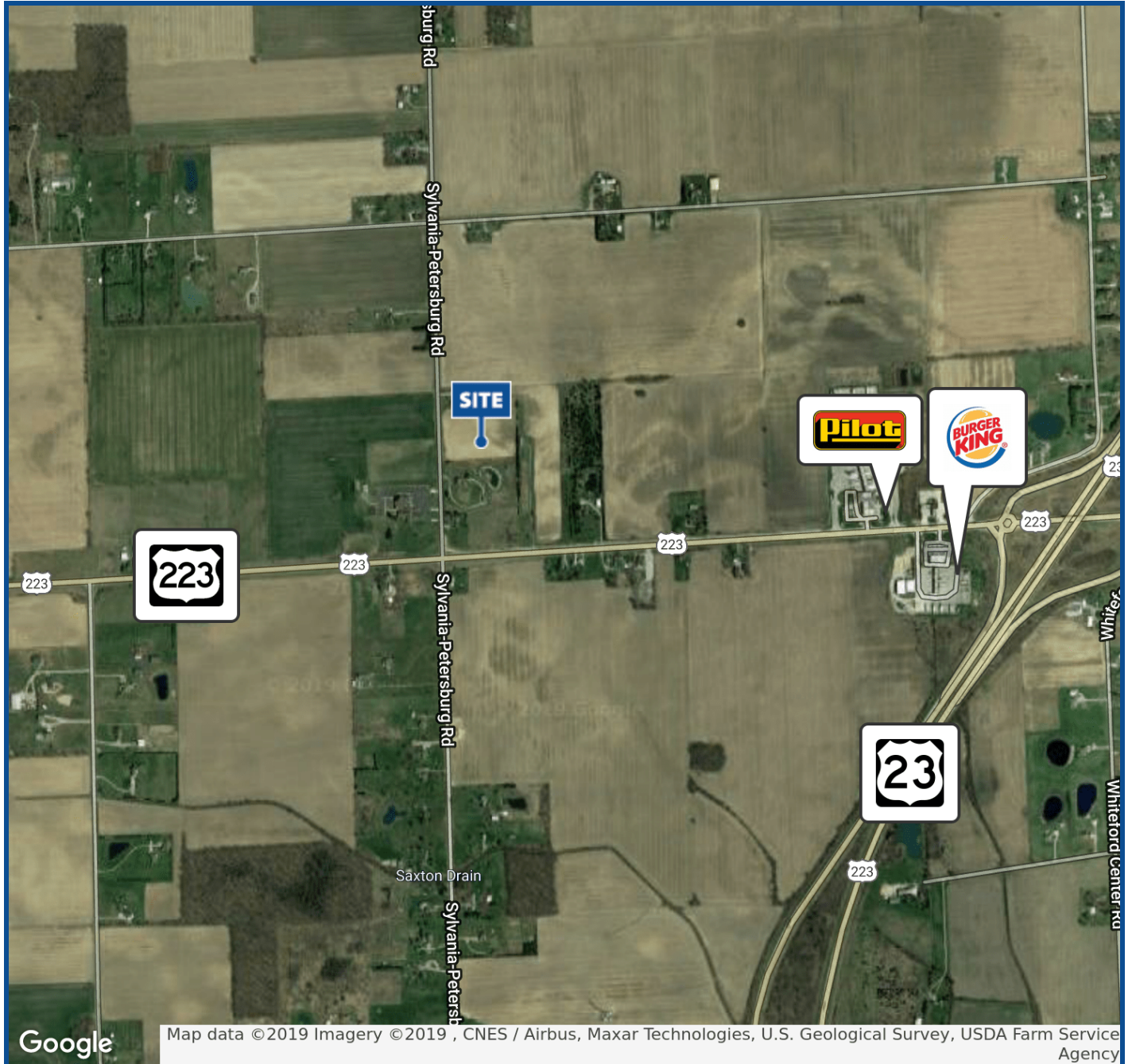
1656 Henthorne Rd Suite 200, Maumee, OH 43537 | 419.877.7777 | www.millerdanberry.com



"Innovative Solutions at Work"

RURAL/RESIDENTIAL LAND

SYLVANIA-PETERSBURG RD., OTTAWA LAKE, MI 49267



JERRY MILLER, CCIM

419.392.6835

jmiller@millerdanberry.com

1656 Henthorne Rd Suite 200, Maumee, OH 43537 | 419.877.7777 | www.millerdanberry.com