

**2400 Davey Road
Woodridge, Illinois**

±10,800 SF AVAILABLE FOR LEASE



RYAN J. EARLEY
(773) 355 - 3020
rearley@lee-associates.com

CAROLINE A. DELL
(773) 355 - 3035
cdell@lee-associates.com

9450 W. Bryn Mawr Avenue, Suite #550 | Rosemont, IL 60018 | p: 773-355-3000 | www.lee-associates.com

2400 Davey Road

Woodridge, Illinois

FOR LEASE

BUILDING SPECIFICATIONS:

Building Size:	±21,000 SF
Available:	±10,800 SF
Office:	±3,000 SF
Ceiling Height:	18'
Truck Loading:	1 Exterior Dock 1 Drive-in Door
Parking:	30 Stalls
Power:	200 Amps
Sprinkler:	Wet
Lease Rate:	\$9.25 Gross PSF

COMMENTS:

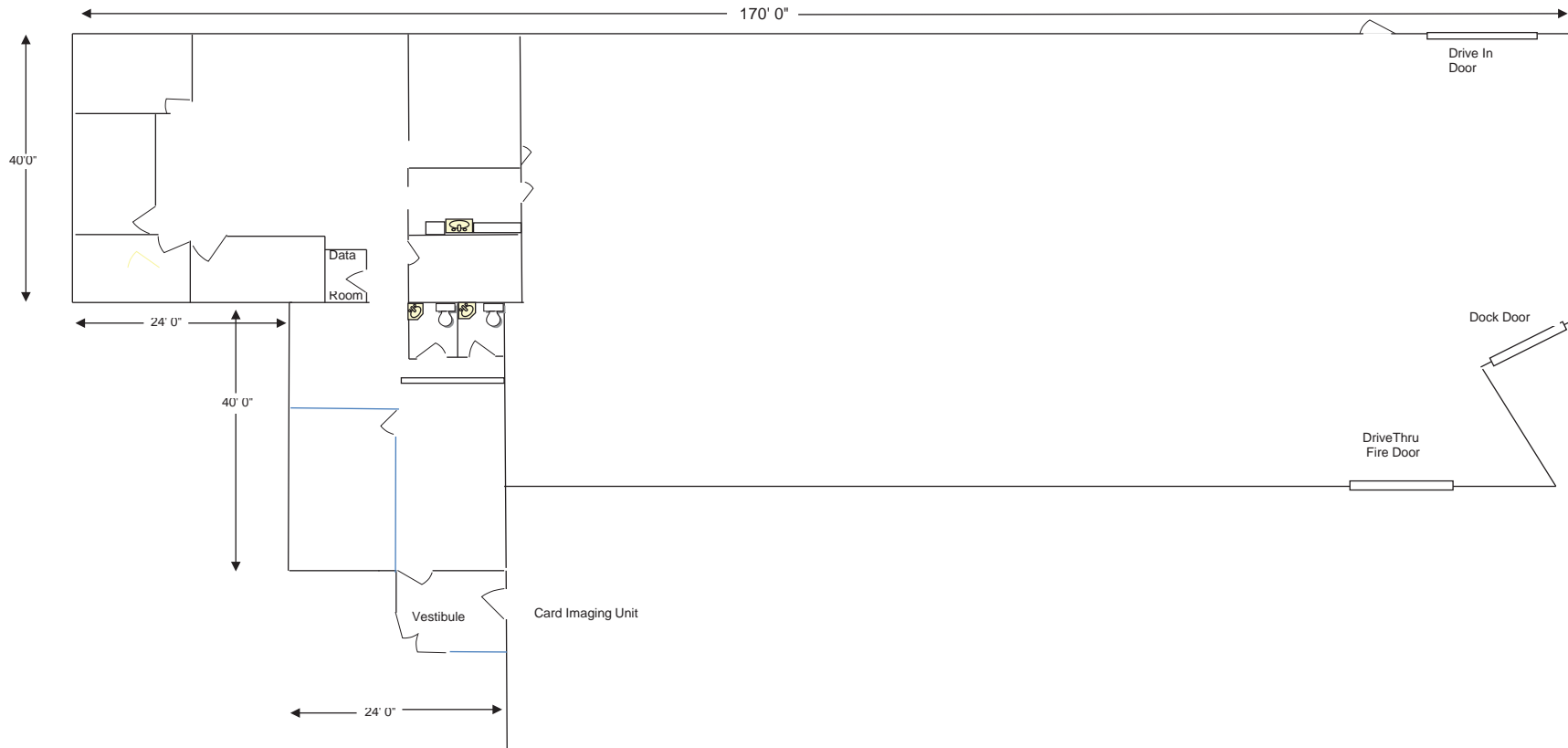
- Existing Furniture & Racking Available
- High Parking Ratio
- High-image Pre-Cast
- Immediate Access to I-55/I-355 via Joliet Road
- Located in the Prestigious Internationale Business Centre
- Built in 2000



2400 Davey Road

Woodridge, Illinois

FOR LEASE



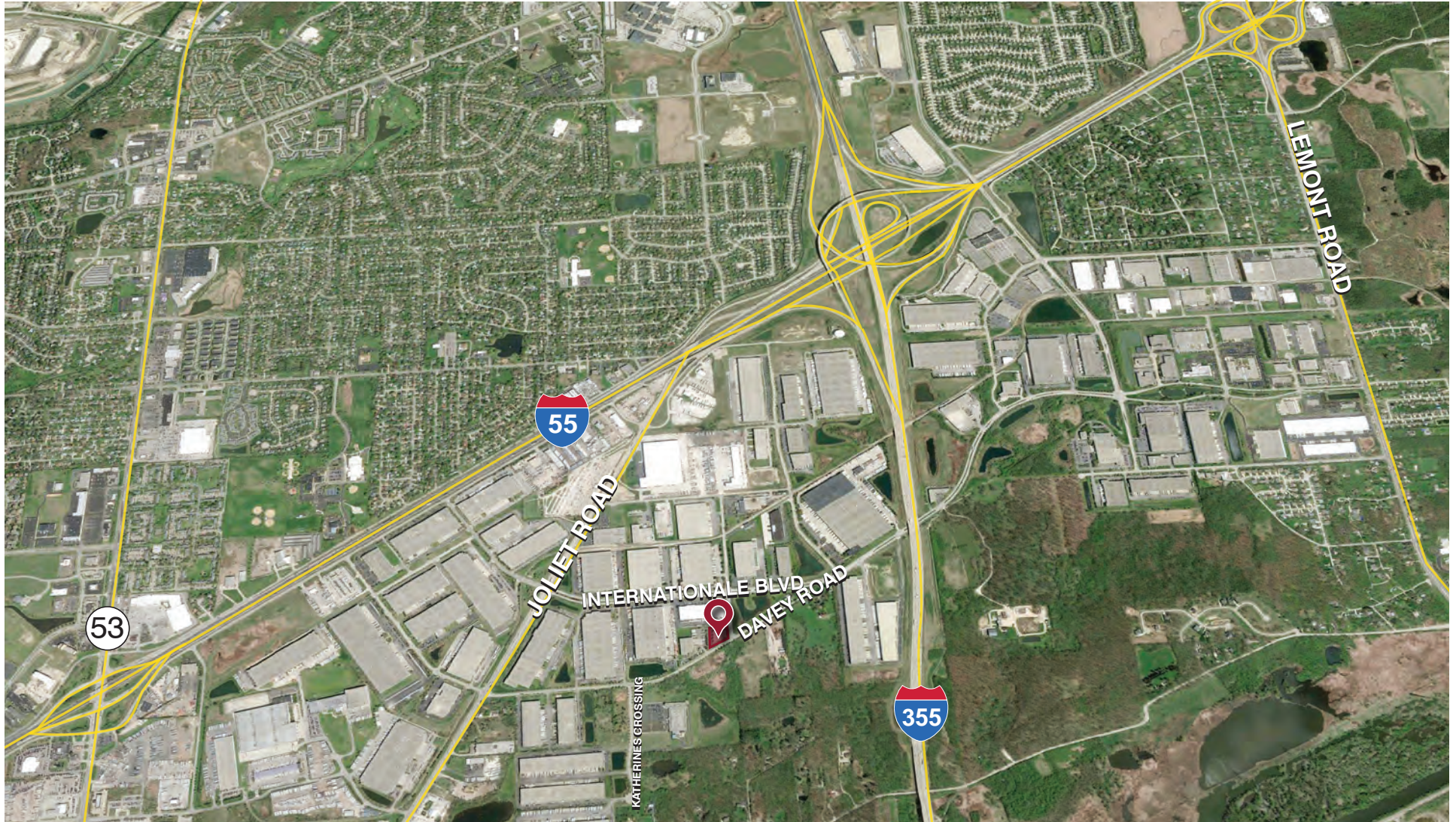
RYAN J. EARLEY
(773) 355 - 3020
rearley@lee-associates.com

CAROLINE A. DELL
(773) 355 - 3035
cdell@lee-associates.com

2400 Davey Road

Woodridge, Illinois

FOR LEASE



**LEE &
ASSOCIATES®**

COMMERCIAL REAL ESTATE SERVICES

RYAN J. EARLEY
(773) 355 - 3020

rearley@lee-associates.com

CAROLINE A. DELL
(773) 355 - 3035

cdell@lee-associates.com