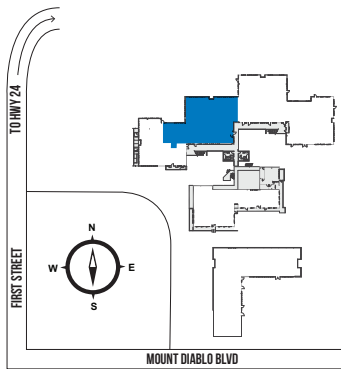


# FLOOR PLANS

BLDG A - 3470 MOUNT DIABLO BLVD

SUITE 110 | ±6,487 SF



**KNUTE BUCKLEW** 925.974.0240 KBUCKLEW@NGKF.COM CA RE LICENSE #01332731

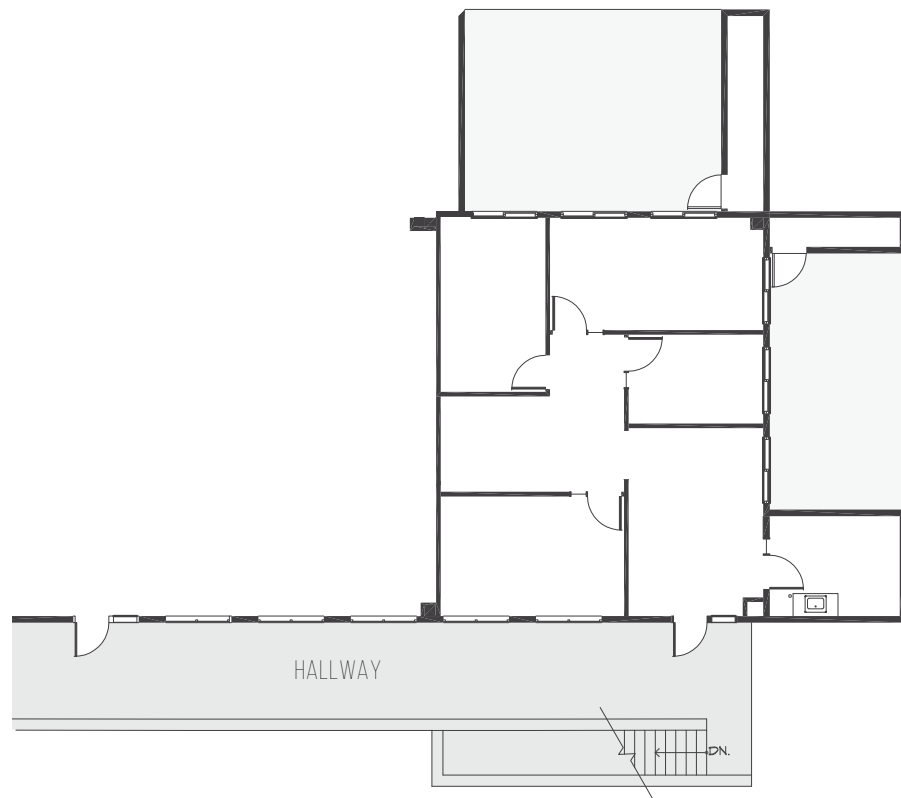
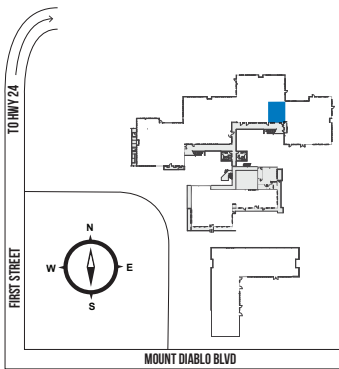
**DANNY BARTZ** 925.974.0231 DBARTZ@NGKF.COM CA RE LICENSE 01971819

THE DISTRIBUTOR OF THIS COMMUNICATION IS PERFORMING ACTS FOR WHICH A REAL ESTATE LICENSE IS REQUIRED. THE INFORMATION CONTAINED HEREIN HAS BEEN OBTAINED FROM SOURCES DEEMED RELIABLE BUT HAS NOT BEEN VERIFIED AND NO GUARANTEE, WARRANTY OR REPRESENTATION, EITHER EXPRESS OR IMPLIED, IS MADE WITH RESPECT TO SUCH INFORMATION. TERMS OF SALE OR LEASE AND AVAILABILITY ARE SUBJECT TO CHANGE OR WITHDRAWAL WITHOUT NOTICE. 18.1378 / 10.18

# FLOOR PLANS

**BLDG A - 3470 MOUNT DIABLO BLVD**

**SUITE 310 | ±1,398 SF**



**KNUTE BUCKLEW** 925.974.0240 KBUCKLEW@NGKF.COM CA RE LICENSE #01332731

**DANNY BARTZ** 925.974.0231 DBARTZ@NGKF.COM CA RE LICENSE 01971819

THE DISTRIBUTOR OF THIS COMMUNICATION IS PERFORMING ACTS FOR WHICH A REAL ESTATE LICENSE IS REQUIRED. THE INFORMATION CONTAINED HEREIN HAS BEEN OBTAINED FROM SOURCES DEEMED RELIABLE BUT HAS NOT BEEN VERIFIED AND NO GUARANTEE, WARRANTY OR REPRESENTATION, EITHER EXPRESS OR IMPLIED, IS MADE WITH RESPECT TO SUCH INFORMATION. TERMS OF SALE OR LEASE AND AVAILABILITY ARE SUBJECT TO CHANGE OR WITHDRAWAL WITHOUT NOTICE. 18.1378 / 10.18