

Former Paul's Market Available

215 East Jackson Street, Mountain Home, Idaho 83647

12,500 - 25,000 SF Available
Lease Rate Negotiable



Property Highlights

- On Jackson St & 2nd St in Downtown Mountain Home
- 12,500 - 25,000 SF Available for Lease
- Excellent Visibility on Jackson St - 565 Feet of Frontage
- Good Traffic Counts - 8,400 Average Daily Traffic
- Pylon Signage
- 1 Dock-High Door
- Large Parking Field
- Grocery Restriction
- Neighboring Tenants Include NAPA & Mountain Home News
- Excellent Ingress / Egress
- Near the Mountain Home Air Force Base - Population 14,000
- No LockBox On-Site, Please Contact Agents for Tours

LeAnn Hume, CCIM, CLS
Senior Director
Retail / Investment Specialist
+1 208 287 8436
leann.hume@paccra.com

Andrea Nilson
Senior Director
Retail / Investment Specialist
+1 208 287 8439
andrea.nilson@paccra.com

398 South 9th Street, Ste 260
Boise, Idaho 83702
Main +1 208 287 9500
Fax +1 208 287 9501
paccra.com



Former Paul's Market Available

215 East Jackson Street, Mountain Home, Idaho 83647

Large Parcel with Adequate Parking Field - 12,500 - 25,000 SF Available - Lease Rate Negotiable



LeAnn Hume, CCIM, CLS
Senior Director
Retail / Investment Specialist
+1 208 287 8436
leann.hume@paccra.com

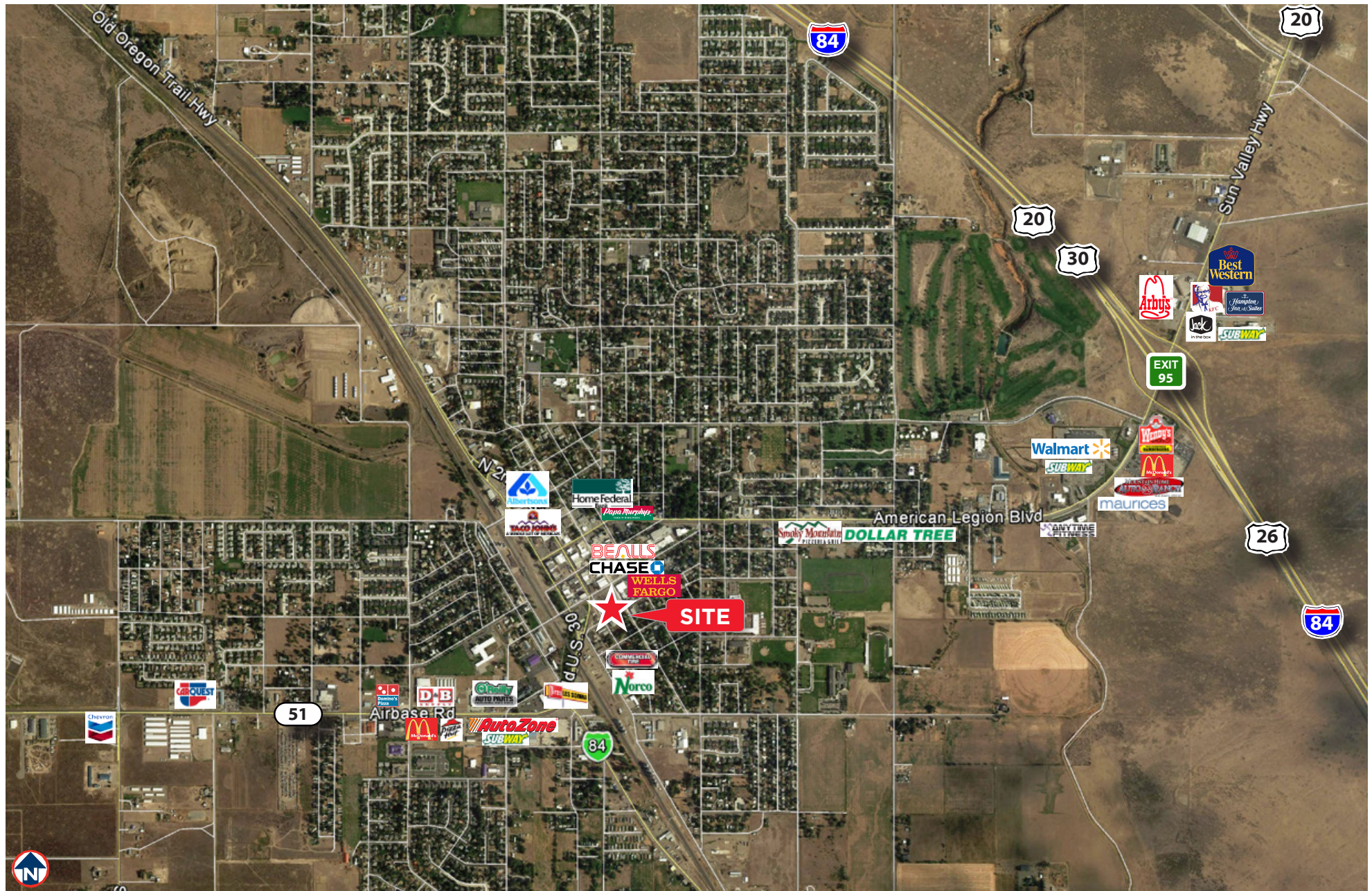
Andrea Nilson
Senior Director
Retail / Investment Specialist
+1 208 287 8439
andrea.nilson@paccra.com

398 South 9th Street, Ste 260
Boise, Idaho 83702
Main +1 208 287 9500
Fax +1 208 287 9501
paccra.com

FOR LEASE

Former Paul's Market Available

215 East Jackson Street, Mountain Home, Idaho 83647



Independently Owned and Operated / A Member of the Cushman & Wakefield Alliance

Cushman & Wakefield Copyright 2015. No warranty or representation, express or implied, is made to the accuracy or completeness of the information contained herein, and same is submitted subject to errors, omissions, change of price, rental or other conditions, withdrawal without notice, and to any special listing conditions imposed by the property owner(s). As applicable, we make no representation as to the condition of the property (or properties) in question.