

25 MURRAY STREET



SPACE DETAILS

LOCATION

North block between Church Street and Broadway

APPROXIMATE SIZE

Ground Floor	618 SF
Lower Level	1,112 SF
Total	1,730 SF

POSSESSION

Immediate

TERM

Negotiable

FRONTAGE

18 FT on Murray Street

CEILING HEIGHT

Ground Floor	14 FT 9 IN
Lower Level	10 FT 6 IN

SITE STATUS

Currently vacant

NEIGHBORS

Target, Korin, Equinox, Los Tacos No.1, Club Pilates, Tribeca Pediatrics, Cut by Wolfgang Puck, CVS pharmacy (coming soon), Mulberry and Vine, Spectrum (coming soon) and Vin Sur Vingt

COMMENTS

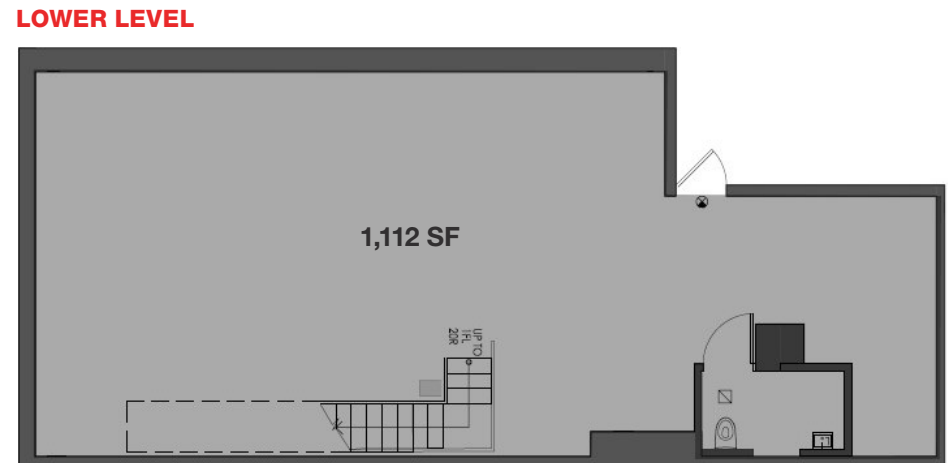
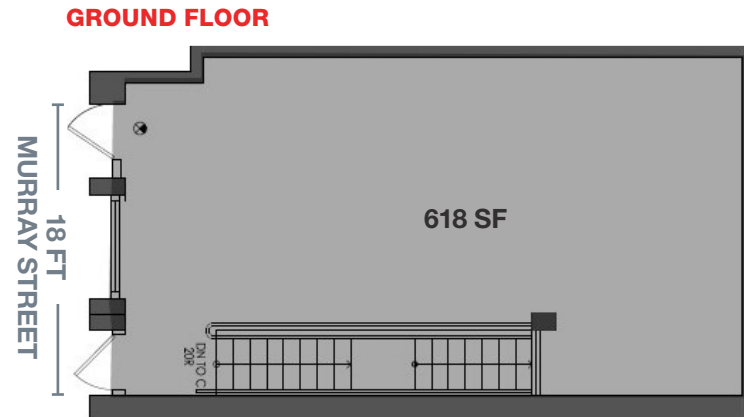
Lower Level is legal selling space with a bathroom

Exposed brick on the Ground Floor and Lower Level

Efficient floorplan with only one column in a convenient location

The area is filled with a strong mix of residents, office workers, tourists and students

In close proximity to the 9/11 Memorial, World Trade Center and City Hall



INTERIOR PHOTOS



AREA RETAIL



+ COMING SOON

CONTACT EXCLUSIVE AGENTS

BARRY FISHBACH
212.331.0115
barry.fishbach@ngkf.com

ANDREW STERN
212.351.9353
andrew.stern@ngkf.com



NGKF.COM

© 2019 NEWMARK KNIGHT FRANK RETAIL. The information contained herein has been obtained from sources deemed reliable but has not been verified and no guarantee, warranty or representation, either express or implied, is made with respect to such information. Terms of sale or lease and availability are subject to change or withdrawal without notice.