

**FOR SALE**

THE  
**BOARDWALK**  
COMPANY

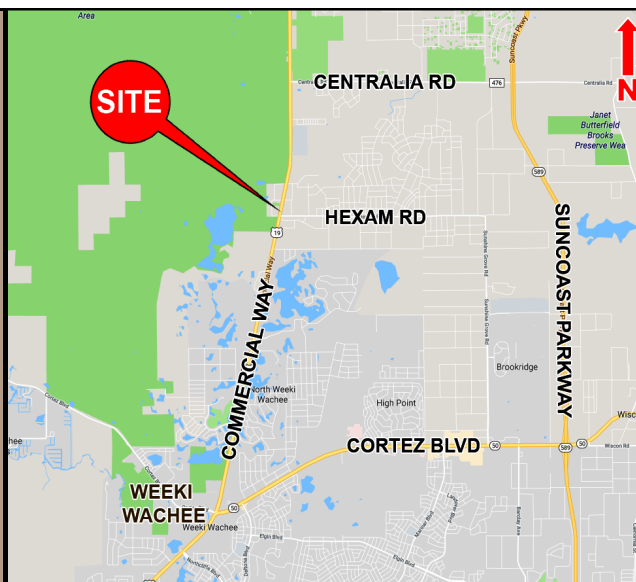


**Sale Price: \$65,000**  
**For Each Parcel**

**DEVELOPMENT OPPORTUNITY • BROOKSVILLE, FL**

Property #8114/8115

- Property address: 11185 Commercial Way, Brooksville, FL 34614
- Two (2) 1/2 acre lots with frontage on Commercial Way/U.S. Highway 19 - Can be sold individually or combined
- Lots are located just south of the Hawk's Nest RV Park and Campground - 200 feet of combined frontage on Commercial Way/U.S. Highway 19
- Currently zoned as Residential
- Daily traffic counts of 14,700 vehicles per day per FDOT



For more information, contact:

**Mike Aitchison**

Office: 727.784.1007

Fax: 727.784.1008

Cell: 916.919.4977

[jma@boardwalkcompany.com](mailto:jma@boardwalkcompany.com)

31640 US Hwy 19 N, Suite 1  
Palm Harbor, FL 34684

[www.BoardwalkCompany.com](http://www.BoardwalkCompany.com)  
LICENSED REAL ESTATE BROKER

The information contained herein was collected from sources deemed to be reliable. The Boardwalk Company, its Agents and Sellers make no warranties or representation of any manner as to the accuracy, and the same is subject to misstatements of fact, errors or omissions, prior sale, change of price, terms, withdrawal from market without notice or other modifications. Buyer, tenants and/or all other parties shall verify all information independently.