



**COLDWELL  
BANKER  
COMMERCIAL**  
DANFORTH

FOR LEASE

## 1127 BROADWAY BUILDING

1125-1129 Broadway

Tacoma, WA 98402

AVAILABLE SPACE:

373 SF up to 7,214 SF

ASKING LEASE RATE:

\$17-\$22/SF/YEAR NNN

### PROPERTY OVERVIEW:

Mixed use building for lease in the heart of Downtown Tacoma. Building features retail, professional office and restaurant suites available ranging from 373 SF up to 7,214 SF. Building located between South 11th and South 13th on Broadway (upper level) and along Commerce Street (lower level).

CBCWORLDWIDE.COM

INFINITEA CAFE



RETAIL, RESTAURANT & PROFESSIONAL OFFICE SUITES

Dominic Temmel  
253 273 6474  
dtemmel@cbcworldwide.com

©2021 Coldwell Banker. All Rights Reserved. Coldwell Banker and the Coldwell Banker Commercial logos are trademarks of Coldwell Banker Real Estate LLC. The Coldwell Banker® System is comprised of company owned offices which are owned by a subsidiary of Realogy Brokerage Group LLC and franchised offices which are independently owned and operated. The Coldwell Banker System fully supports the principles of the Equal Opportunity Act.

**COLDWELL BANKER COMMERCIAL  
DANFORTH**  
33313 1st Way S, Federal Way, WA 98003  
253.874.3200



# 1127 BROADWAY BUILDING

1125-1129 Broadway, Tacoma, WA 98402

LEASE



### AVAILABLE SPACES:

SUITE 201: 1,234 SF \$21/SF

SUITE 1129 REAR: 373 SF \$850

1126 COMMERCE SUITE 1: 2,749 SF \$22/SF

1126 COMMERCE SUITE 2: 1,901 SF \$17/SF

1130 COMMERCE: 2,249 SF \$17/SF

CBCWORLDWIDE.COM

Dominic Temmel  
253 273 6474  
dtemmel@cbcworldwide.com

### PROPERTY OVERVIEW

Retail, restaurant or professional office suites available for lease. Asking lease rates ranging from \$17-\$22/SF/YEAR plus triple net (NNN \$2.85). 1126 Commerce Suite 1 features a kitchen with a type 1 hood and grease system and could be combined with 1126 Commerce Suite 2 and/or 1130 Commerce.

### PROPERTY HIGHLIGHTS

- Located in the heart of Downtown Tacoma next the Tacoma Financial Center
- Located along the Tacoma Link light rail that is expanding through Stadium District and Hilltop District
- Easy access to the freeways along South 13th Street.
- Connected via sky bridge to the Park Place parking garage and monthly parking available nearby along Commerce Street
- Located one block from the Downtown Tacoma Farmer's Market
- Located close to Hotel Murano and Tacoma Convention Center
- Sprinklers throughout building

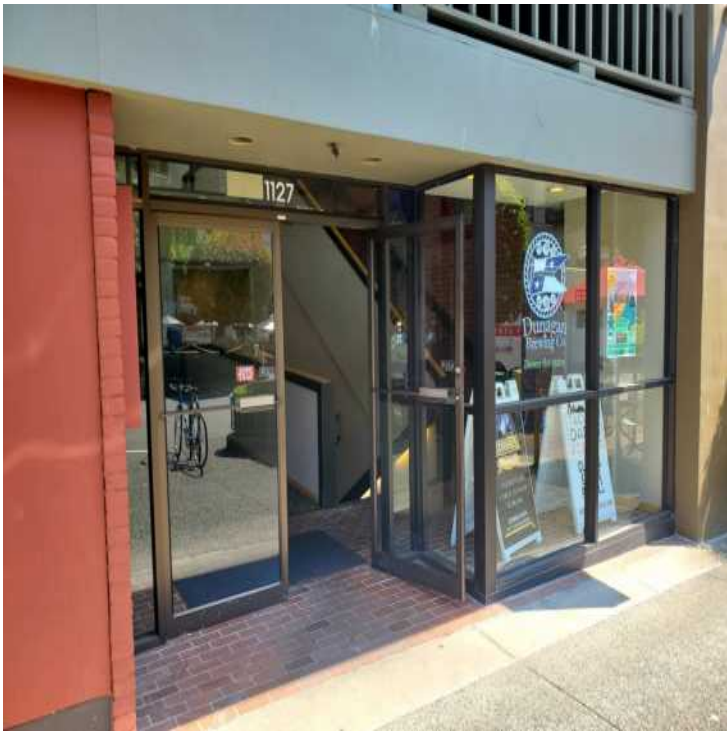




# 1127 BROADWAY BUILDING

1125-1129 Broadway, Tacoma, WA 98402

LEASE



CBCWORLDWIDE.COM

Dominic Temmel  
253 273 6474  
dtemmel@cbcworldwide.com

 **COLDWELL  
BANKER  
COMMERCIAL**  
DANFORTH





# 1127 BROADWAY BUILDING

1125-1129 Broadway, Tacoma, WA 98402

LEASE



CBCWORLDWIDE.COM

Dominic Temmel  
253 273 6474  
dtemmel@cbcworldwide.com

 **COLDWELL  
BANKER  
COMMERCIAL**  
DANFORTH





# 1127 BROADWAY BUILDING

1125-1129 Broadway, Tacoma, WA 98402

LEASE



CBCWORLDWIDE.COM

Dominic Temmel  
253 273 6474  
dtemmel@cbcworldwide.com

**COLDWELL  
BANKER  
COMMERCIAL**  
DANFORTH