



Property Features

- 7,411 SF available mid 2019
 - 4,243 SF – 300 Loyal St
 - 3,168 SF – 315 Lynn St
- +/- 43,000 SF mixed use development consisting of apartments, restaurant and retail space
- Located in Danville's River District which consists of many other restaurant and retail establishments
- On-site parking
- Space has a built-in customer base (50 apartments on-site)
- In close proximity to Danville's Central Business District
- Zoned TWC – Tobacco Warehouse Commercial – Mixed Use
- Base rental rate \$8.00 SF – space delivered in a vanilla shell condition

Demographics			
	1 Mile	3 Miles	5 Miles
Population	6,057	31,065	48,614
No. of Households	2,582	13,457	20,880
Avg. HH Income	\$31,214	\$42,109	\$46,782
Daytime Population	9,786	41,918	57,510

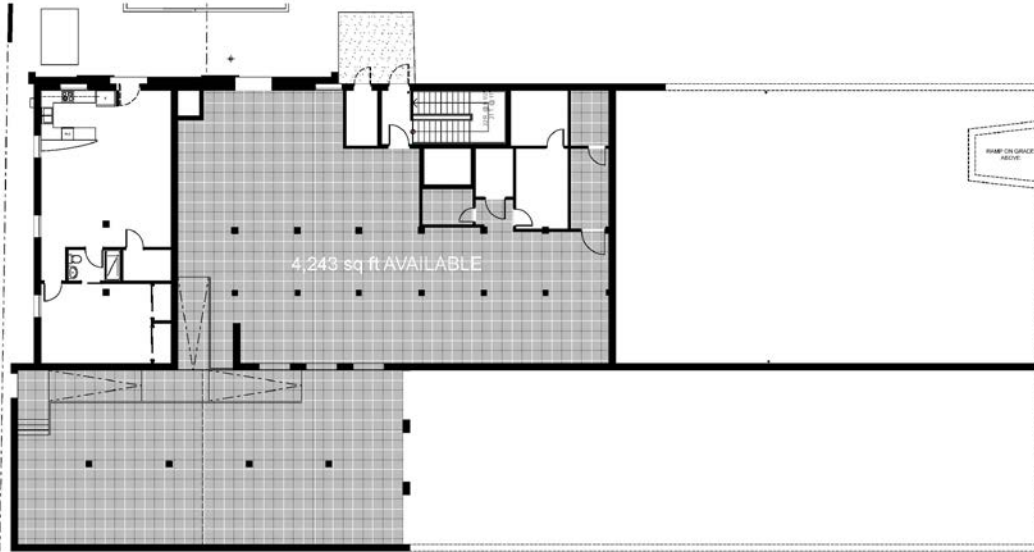
For more information, contact:

NORMAN MOON, CCIM, SIOR, CRE
 First Vice President
 434 455 2302
norman.moon@thalhimer.com

GEORGE LUPTON, CCIM
 Senior Associate
 434 455 2306
george.lupton@thalhimer.com

Coffee Crossing
 6000 Boonsboro Road, Suite A
 Lynchburg, VA 24503
www.thalhimer.com

300 Loyal Street



315 Lynn Street



For more information, contact:

NORMAN MOON, CCIM, SIOR, CRE
First Vice President
434 455 2302
norman.moon@thalhimer.com

GEORGE LUPTON, CCIM
Senior Associate
434 455 2306
george.lupton@thalhimer.com

Coffee Crossing
6000 Boonsboro Road, Suite A
Lynchburg, VA 24503
www.thalhimer.com

RESTAURANT/RETAIL FOR LEASE
Smith Seeds Bldg-Mixed Use Development

315 Lynn Street | Danville, VA 24541



For more information, contact:

NORMAN MOON, CCIM, SIOR, CRE
First Vice President
434 455 2302
norman.moon@thalhimer.com

GEORGE LUPTON, CCIM
Senior Associate
434 455 2306
george.lupton@thalhimer.com

Coffee Crossing
6000 Boonsboro Road, Suite A
Lynchburg, VA 24503
www.thalhimer.com