

21724 N. MAIN STREET
PECULIAR, MISSOURI 64078

LAND FOR SALE | 1.2± ACRES

PROPERTY FEATURES

- All utilities are near the site or at the street
- Level parcel for easy development
- Located within Peculiar city limits
- Located close to Industrial Park
- Excellent highway access

ADDITIONAL INFO

SALE PRICE	\$149,000
TAXES (2016)	\$816.29
ZONING	C-1 (Commercial)



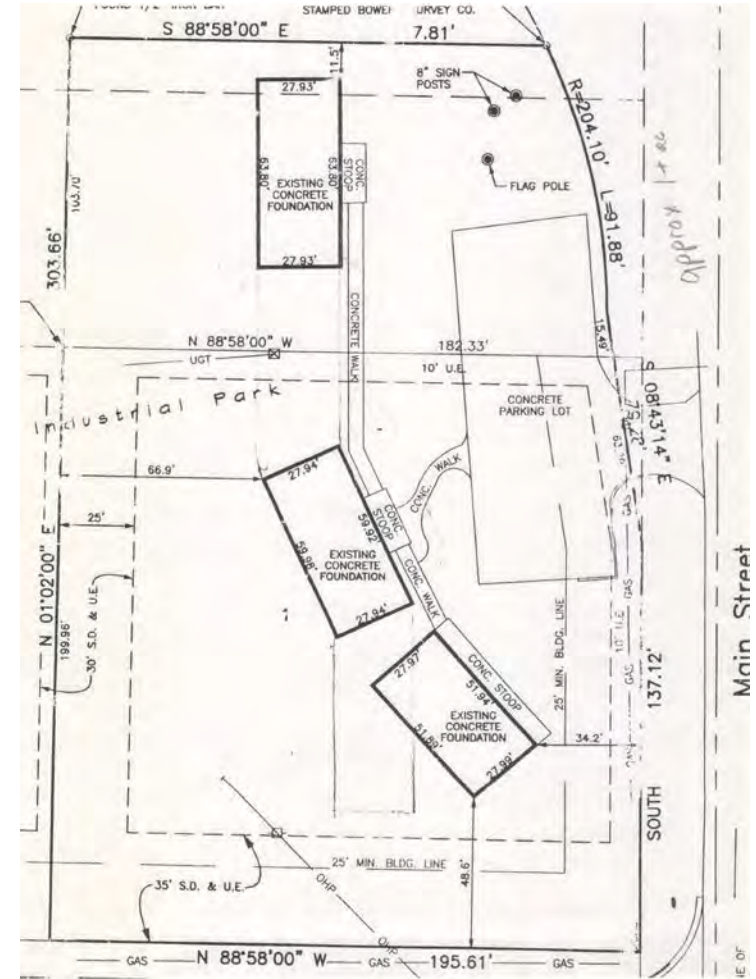
For more information, please contact:

ANDY TAYLOR
Industrial Brokerage
816.936.8503 direct
816.812.7676 mobile
ataylor@kessingerhunter.com

KESSINGER/HUNTER & COMPANY, LC
2600 Grand Boulevard, Suite 700
Kansas City, MO 64108
816.842.2690
www.kessingerhunter.com

21724 N. MAIN STREET, PECULIAR, MISSOURI 64078

Land for Sale



For more information, please contact:

ANDY TAYLOR
Industrial Brokerage
816.936.8503 direct
816.812.7676 mobile
ataylor@kessingerhunter.com

KESSINGER/HUNTER & COMPANY, LC
2600 Grand Boulevard, Suite 700
Kansas City, MO 64108
816.842.2690
www.kessingerhunter.com