



# THE DEPOT AT TRESTLE



Walk Score

90

[www.depotattrestle.com](http://www.depotattrestle.com)

±9,299 SF

555 & 661 EL CAMINO REAL



**Mike Moran, SIOR**  
Executive Managing Director  
+1 650 401 2121  
mike.moran@cushwake.com

**Ben Paul**  
Executive Managing Director  
+1 650 401 2123  
ben.paul@cushwake.com

**Pat Yaeger**  
Senior Director  
+1 650 401 2133  
pat.yaeger@cushwake.com





UNDER CONSTRUCTION

# A CLASS A TRANSIT ORIENTED DEVELOPMENT

TWO BUILDINGS

+29,233 SF CLASS A OFFICE/RETAIL PROJECT

555 EL CAMINO REAL - ±3,844 SF

661 EL CAMINO REAL - ±5,455 SF



## READY FOR TI'S

- Ideally located at the San Carlos CalTrain depot and just steps from downtown San Carlos Amenities
- Multiple outdoor areas and terraces at each building
- 15 minute drive to San Francisco International Airport and 30 minute drive to San Jose International Airport
- Opportunity for Building Signage

[www.depotattrestle.com](http://www.depotattrestle.com)



**Mike Moran, SIOR**  
Executive Managing Director  
+1 650 401 2121  
mike.moran@cushwake.com

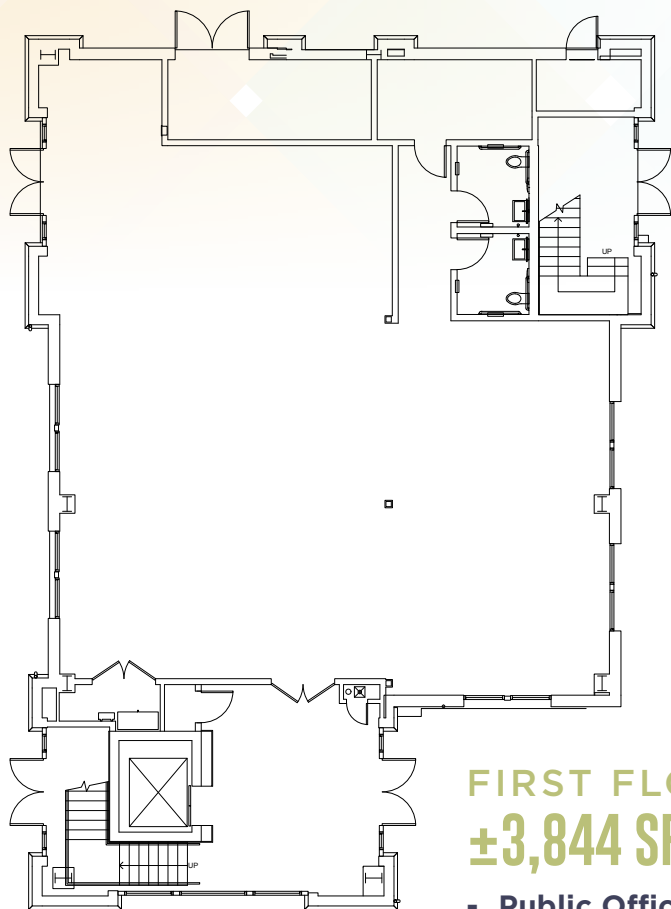
**Ben Paul**  
Executive Managing Director  
+1 650 401 2123  
ben.paul@cushwake.com

**Pat Yaeger**  
Senior Director  
+1 650 401 2133  
pat.yaeger@cushwake.com



# FLOOR PLAN

555 EL CAMINO REAL  
**±3,844 SF**



**FIRST FLOOR**  
**±3,844 SF**

- Public Office or  
Retail Use



**SECOND FLOOR**  
**±3,838 SF**

[www.depotattrestle.com](http://www.depotattrestle.com)



**Mike Moran, SIOR**  
Executive Managing Director  
+1 650 401 2121  
mike.moran@cushwake.com

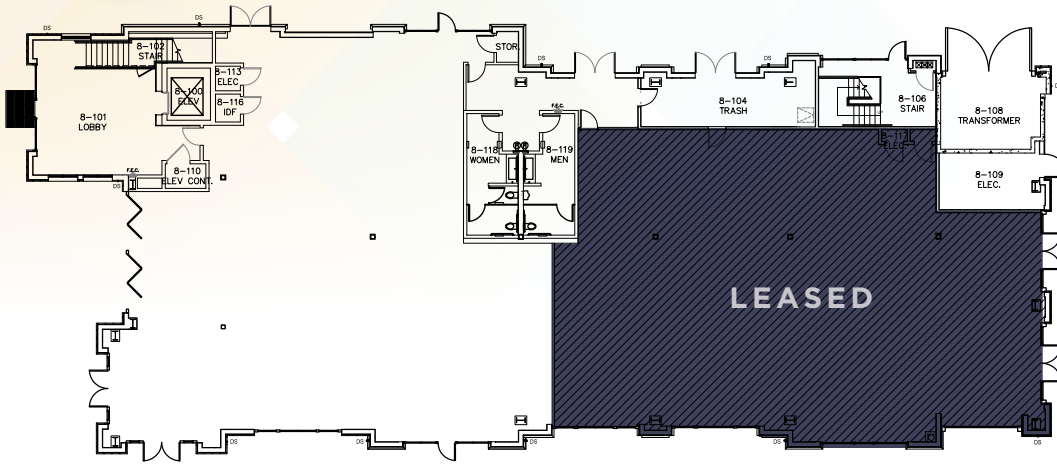
**Ben Paul**  
Executive Managing Director  
+1 650 401 2123  
ben.paul@cushwake.com

**Pat Yaeger**  
Senior Director  
+1 650 401 2133  
pat.yaeger@cushwake.com

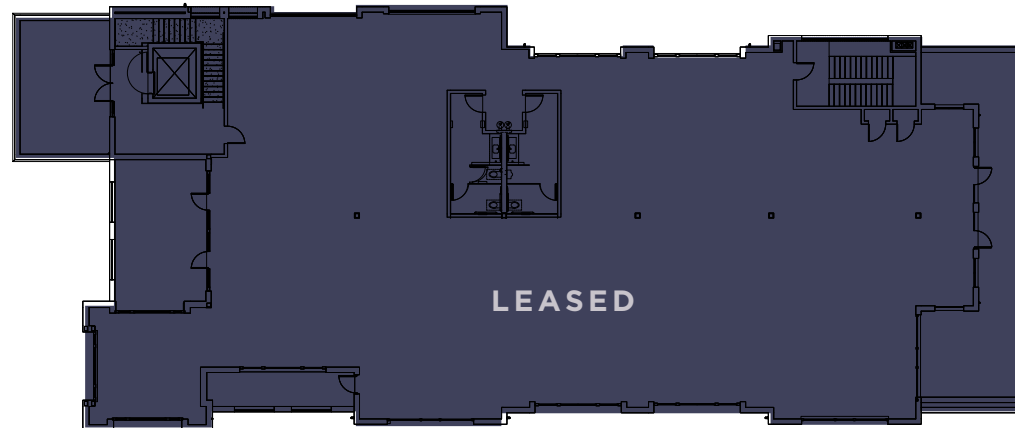


# FLOOR PLAN

661 EL CAMINO REAL  
**±5,455 SF**



**FIRST FLOOR**  
**±5,455 SF**  
- Public Office or  
Retail Use



**SECOND FLOOR**

[www.depotattrestle.com](http://www.depotattrestle.com)



**Mike Moran, SIOR**  
Executive Managing Director  
+1 650 401 2121  
mike.moran@cushwake.com

**Ben Paul**  
Executive Managing Director  
+1 650 401 2123  
ben.paul@cushwake.com

**Pat Yaeger**  
Senior Director  
+1 650 401 2133  
pat.yaeger@cushwake.com





# SITE PLAN



[www.depotattrestle.com](http://www.depotattrestle.com)



**Mike Moran, SIOR**  
Executive Managing Director  
+1 650 401 2121  
mike.moran@cushwake.com

**Ben Paul**  
Executive Managing Director  
+1 650 401 2123  
ben.paul@cushwake.com





**Pat Yaeger**  
Senior Director  
+1 650 401 2133  
pat.yaeger@cushwake.com







### LEGEND

-  Caltrain Route
-  Caltrain Station
-  Baby Bullet Station
-  San Carlos Caltrain Station  
The Depot at Trestle

### SCHEDULE

#### NORTHBOUND WEEKDAYS

5:15, 5:49, 7:04, 7:29, 8:05, 8:29, 9:02, 9:28, 10:01, 10:37, 10:59, 11:59, 12:59, 1:59, 2:10, 2:59, 3:09, 4:01, 4:29, 4:44, 5:05, 5:33, 5:40, 6:05, 6:33, 6:40, 7:12, 7:24, 7:53, 8:31, 9:31, 10:31, 11:17

#### SOUTHBOUND WEEKDAYS

5:38, 6:10, 6:39, 7:02, 7:18, 7:40, 8:02, 8:18, 8:40, 9:02, 9:18, 9:46, 10:21, 10:46, 11:46, 12:46, 1:46, 2:46, 3:18, 3:46, 4:11, 4:56, 5:22, 6:00, 6:22, 6:56, 7:22, 8:18, 9:18, 10:18, 11:28, 12:50

-  AM TRAINS
-  PM TRAINS

Visit [www.caltrain.com](http://www.caltrain.com) for more information.

[www.depotattrestle.com](http://www.depotattrestle.com)



**Mike Moran, SIOR**  
Executive Managing Director  
+1 650 401 2121  
mike.moran@cushwake.com

**Ben Paul**  
Executive Managing Director  
+1 650 401 2123  
ben.paul@cushwake.com

**Pat Yaeger**  
Senior Director  
+1 650 401 2133  
pat.yaeger@cushwake.com





# AMENITIES

**TRADER JOE'S**  
**Office DEPOT**



## RESTAURANTS

- 1 Blue Line Pizza
- 2 Starbucks  
House of Bagels  
Saffron Indian Bistro  
Red Hot Chili Pepper  
Delizie  
Cuisinett  
Rail Sports Bar  
Nino's Ristorante  
Trattoria de Vittorio
- 3 Gherkin's Sandwich  
SusieCakes  
San Carlos Bar & Grill
- 4 Patxi's Pizza San Carlos  
Peet's Coffee
- 5 Piacere  
Seiya  
Rita's Italian Ice  
Subway  
Santorini  
Spasso  
ASYA  
Pranzi  
Mountain Mike's Pizza
- 6 Town
- 7 Starbucks  
Nothing Bundt Cakes  
LuLu's on Laurel Street  
Ozuma Japanese  
Broiler Express
- 8 Rustic House Oyster Bar
- 9 The Refuge  
Ale Arsenal

## SERVICES

- 1 The Home Depot
- 2 Lucky
- 3 Office Depot
- 4 REI
- 5 TJ Maxx  
Bassett
- 6 PetSmart  
Best Buy
- 7 Trader Joe's

## FITNESS

- 1 Mecca Fitness
- 2 barre3 San Carlos
- 3 M fitness and health
- 4 Core Total Fitness
- 5 IMPACT! Kickboxing
- 6 King's Camps & Fitness

## BANKS

- 1 Wells Fargo  
Comerica Bank
- 2 Bank of America  
U.S. Bank
- 3 Union Bank
- 4 Citibank
- 5 Chase



[www.depotattrestle.com](http://www.depotattrestle.com)



**Mike Moran, SIOR**  
Executive Managing Director  
+1 650 401 2121  
mike.moran@cushwake.com

**Ben Paul**  
Executive Managing Director  
+1 650 401 2123  
ben.paul@cushwake.com

**Pat Yaeger**  
Senior Director  
+1 650 401 2133  
pat.yaeger@cushwake.com

