



Industrial Development/User Site

6447 South Mountain Road / Mesa, Arizona / ±4.98Acres



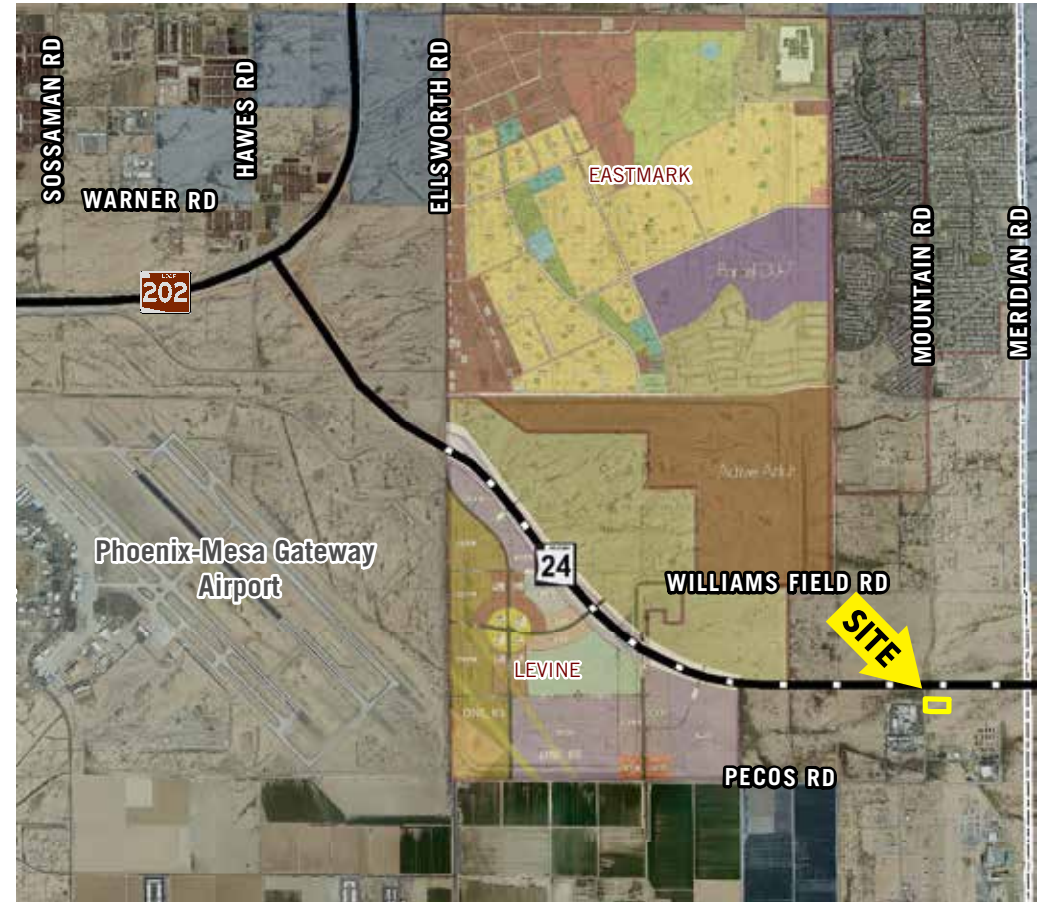
Kent Hanson
Senior Director
+1 602 224.4433
kent.hanson@cushwake.com

Pete Klees
Senior Director
+1 602 224 4415
pete.klees@cushwake.com

2555 E. Camelback Rd, Ste 400
Phoenix, Arizona 85016
ph: +1 602 954 9000 fx: +1 602 253 0528
cushmanwakefield.com

Site Features

Location:	6447 South Mountain Road, Mesa, AZ
Land size:	±4.98Acres
Zoning:	GI (Formerly M2)
Utilities:	Electricity - SRP; Water/Sewer - City of Mesa; Gas - Southwest Gas
Dimensions:	305 ft x 650ft
Parcel #:	304-34-928A
Price:	\$5.00/SF
Other:	Close proximity to SR-24 and Loop-202



Kent Hanson
Senior Director
+1 602 224.4433
kent.hanson@cushwake.com

Pete Klees
Senior Director
+1 602 224 4415
pete.klees@cushwake.com

2555 E. Camelback Rd, Ste 400
Phoenix, Arizona 85016
ph: +1 602 954 9000 fx: +1 602 253 0528
cushmanwakefield.com