

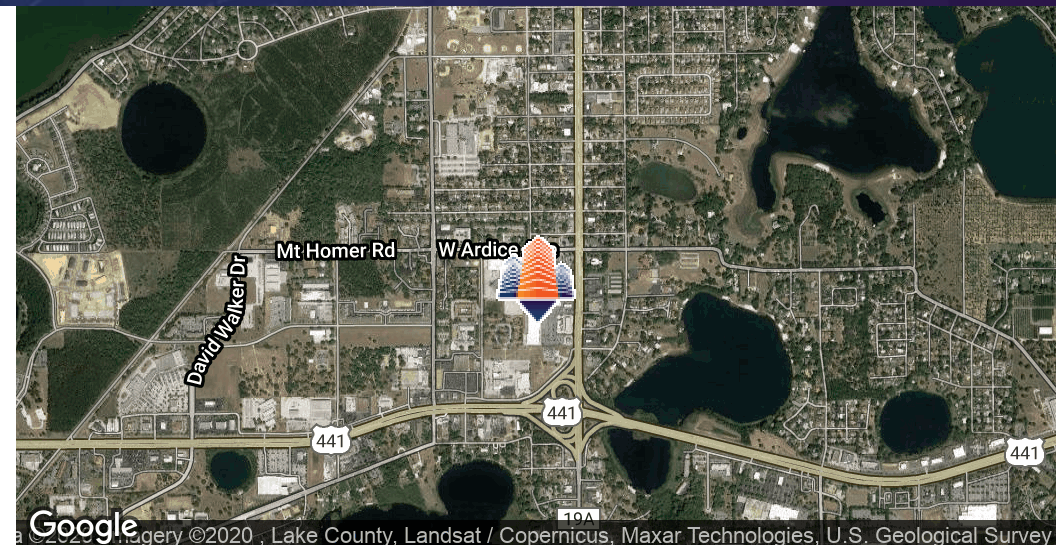
Lake Hills Plaza

2830 S Bay Street, Eustis, FL 32726



EQUITY
INVESTMENT
SERVICES

PROPERTY SUMMARY



PROPERTY HIGHLIGHTS

- Completely Redeveloped Center
- Anchored by Planet Fitness & Ollie's Bargain Outlet
- 1,000 SF - 35,800 SF Available
- 10,800 SF Space Adjacent to Ollie's- Available April 2020
- Located at Signalized Intersection
- Custom Turn-Key Medical Buildouts Available
- Join Nearby Tenants such as Planet Fitness, MetroPCS, Bealls Outlet, McDonald's, and Tractor Supply
- Abundant Parking

OFFERING SUMMARY

Lease Rate:	Negotiable
Available SF:	1,000 - 35,800 SF
Building Size:	93,621 SF

DEMOGRAPHICS	1 MILE	3 MILES	5 MILES
Total Households	1,468	12,752	24,525
Total Population	3,591	30,031	57,583
Average HH Income	\$54,359	\$55,401	\$58,629

Nick Barbato
407.573.0711 x309
nbarbato@eisre.com



7575 Dr. Phillips Blvd, Ste 390
Orlando, FL 32819
www.eisre.com

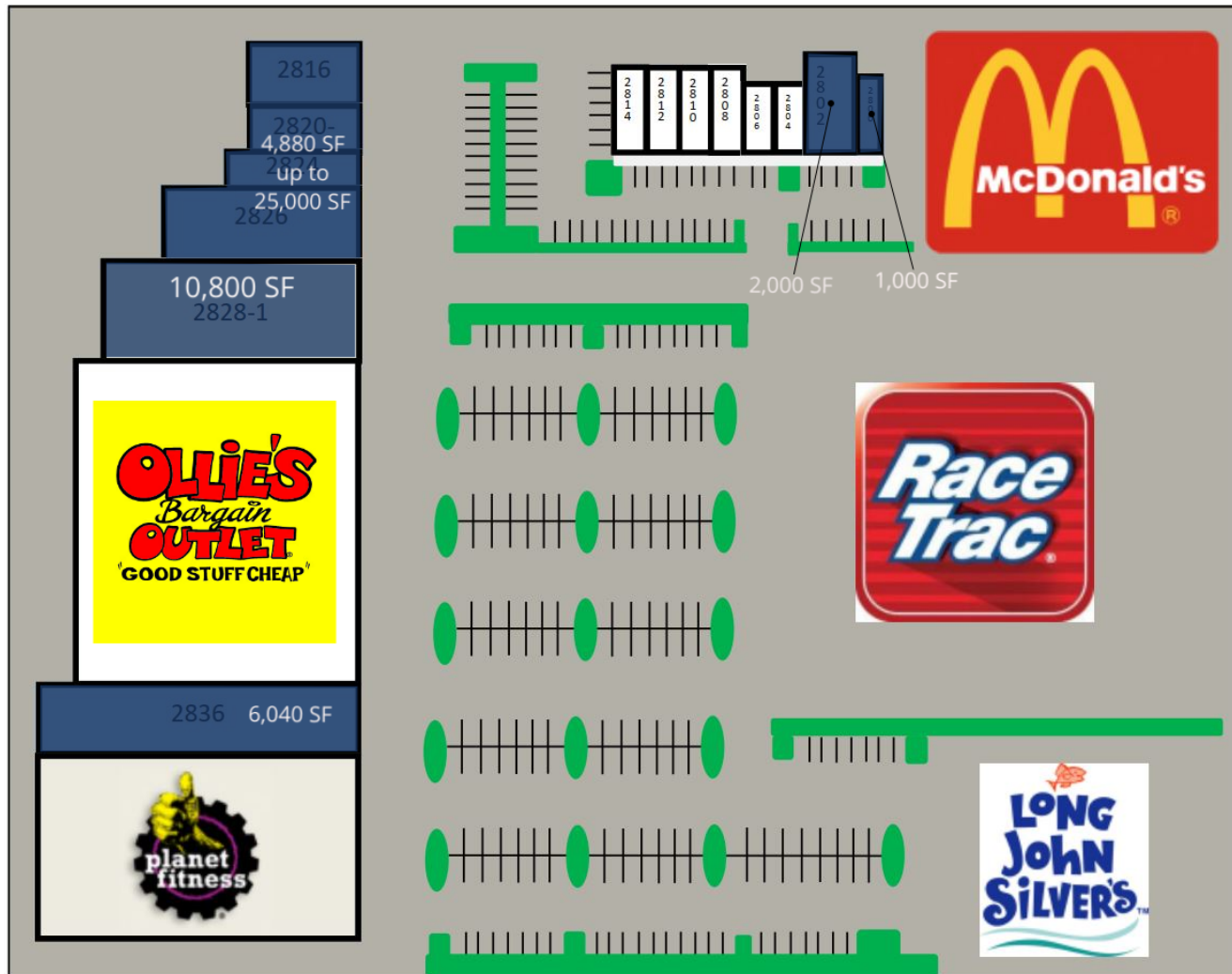
Lake Hills Plaza

2830 S Bay Street, Eustis, FL 32726



EQUITY
INVESTMENT
SERVICES

AVAILABLE SPACES



AVAILABLE

Nick Barbato
407.573.0711 x309
nbarbato@eisre.com



7575 Dr. Phillips Blvd, Ste 390
Orlando, FL 32819
www.eisre.com

Lake Hills Plaza

2830 S Bay Street, Eustis, FL 32726



EQUITY
INVESTMENT
SERVICES

PHOTOS



Nick Barbato
407.573.0711 x309
nbarbato@eisre.com



7575 Dr. Phillips Blvd, Ste 390
Orlando, FL 32819
www.eisre.com

Lake Hills Plaza

2830 S Bay Street, Eustis, FL 32726



EQUITY
INVESTMENT
SERVICES

RETAILER MAP



Map data ©2020 Imagery ©2020, Lake County, Maxar Technologies, U.S. Geological Survey

Nick Barbato
407.573.0711 x309
nbarbato@eisre.com



7575 Dr. Phillips Blvd, Ste 390
Orlando, FL 32819
www.eisre.com

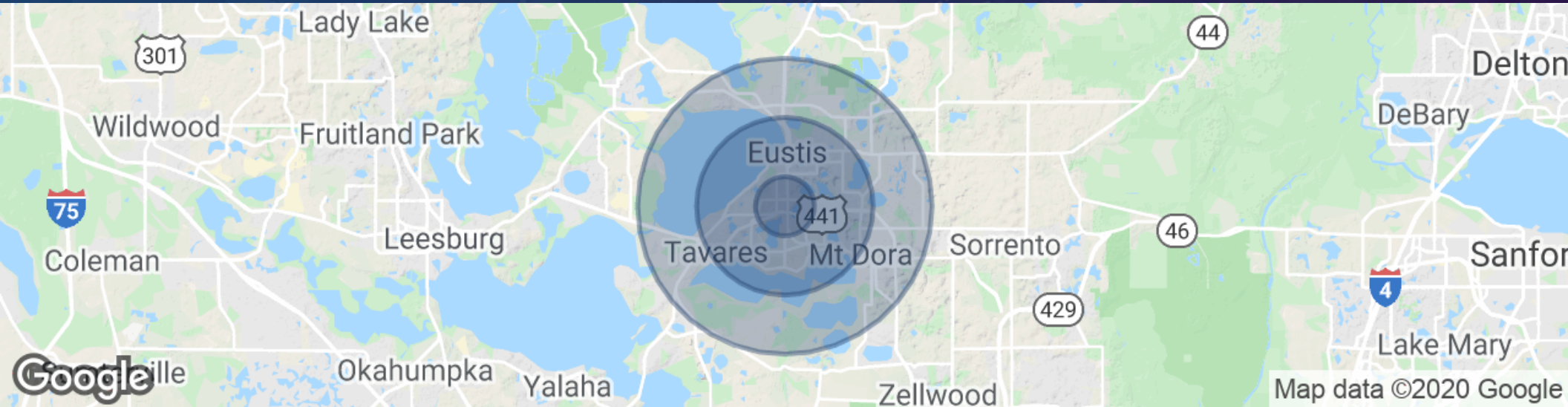
Lake Hills Plaza

2830 S Bay Street, Eustis, FL 32726



EQUITY
INVESTMENT
SERVICES

DEMOGRAPHICS MAP & REPORT



POPULATION	1 MILE	3 MILES	5 MILES
Total Population	3,591	30,031	57,583
Median age	42.0	43.6	46.0
Median age (Male)	41.4	42.9	45.2
Median age (Female)	43.1	45.2	47.4
HOUSEHOLDS & INCOME	1 MILE	3 MILES	5 MILES
Total households	1,468	12,752	24,525
# of persons per HH	2.4	2.4	2.3
Average HH income	\$54,359	\$55,401	\$58,629
Average house value	\$209,084	\$197,063	\$196,626

* Demographic data derived from 2010 US Census

Nick Barbato
407.573.0711 x309
nbarbato@eisre.com



7575 Dr. Phillips Blvd, Ste 390
Orlando, FL 32819
www.eisre.com