

# 675 - 13,370 SF WESTPORT OFFICE AVAILABLE FOR LEASE

11861 WESTLINE INDUSTRIAL DRIVE | ST. LOUIS, MISSOURI 63146



**\$9.00 PSF FULL SERVICE  
INTRODUCTORY RENT  
CALL BROKER FOR DETAILS!**



## Property Highlights

- Single-level office building offering direct entry
- Unique space sizes available - call for details
- Fully sprinklered
- Great visibility on Westline Industrial Drive
- Ample parking
- Easy access to I-270, Page Ave and Dorsett Road
- Convenient Westport location offering a blend of dining, entertainment and lodging venues
- **LEASE RATE: \$14.00 PSF FULL SERVICE**

For additional information, please contact:

**BO KEEFER**  
bkeefe@hutkin.com  
314.708.1258 o.  
314.973.1242 m.

**TONY GIARRATANO**  
tony@hutkin.com  
314.708.4922 o.  
314.276.2352 m.

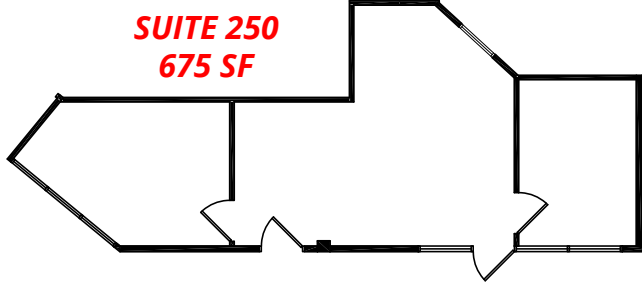
**HUTKIN**  
DEVELOPMENT COMPANY

10829 OLIVE BOULEVARD, SUITE 200  
ST. LOUIS, MISSOURI 63141  
314.872.9140 PHONE  
314.872.9001 FAX  
WWW.HUTKIN.COM

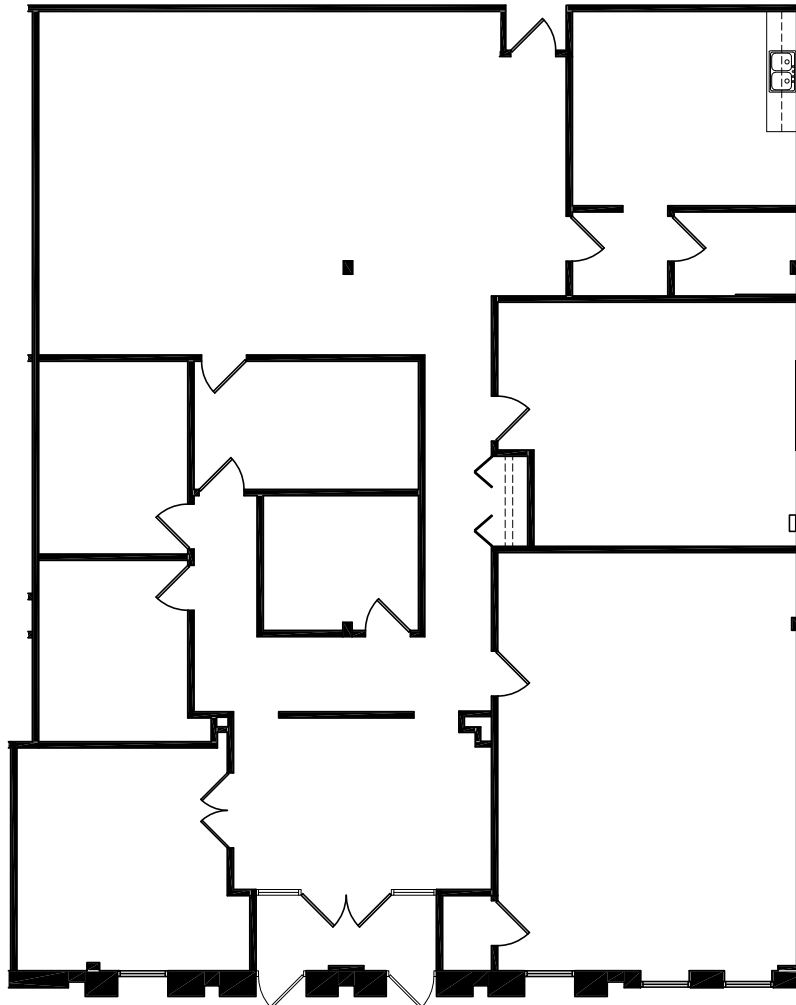
# 675 - 13,370 SF WESTPORT OFFICE AVAILABLE FOR LEASE

11861 WESTLINE INDUSTRIAL DRIVE | ST. LOUIS, MISSOURI 63146

**SUITE 250**  
**675 SF**

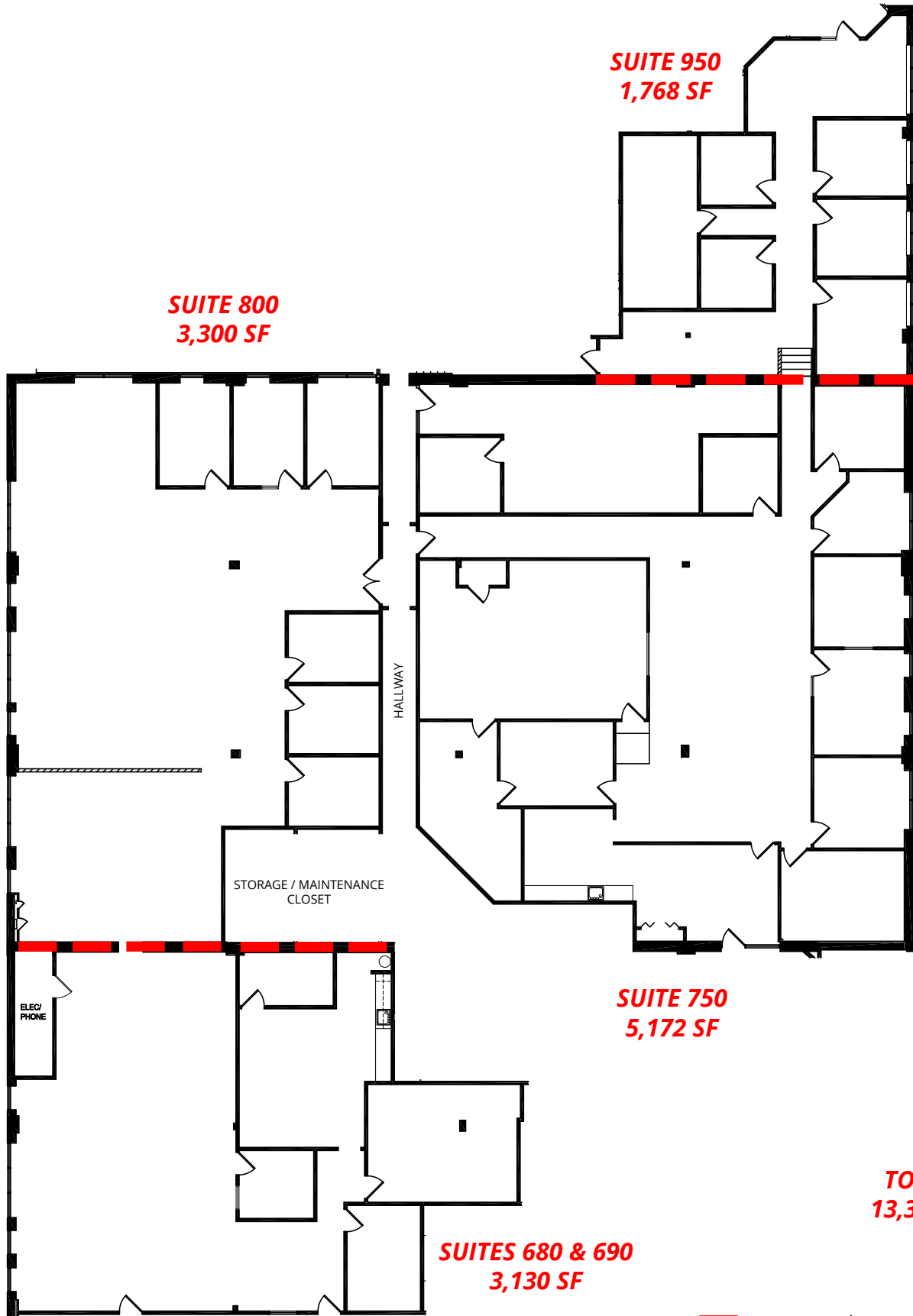


**SUITE 700A**  
**3,730 SF**



# 675 - 13,370 SF WESTPORT OFFICE AVAILABLE FOR LEASE

11861 WESTLINE INDUSTRIAL DRIVE | ST. LOUIS, MISSOURI 63146



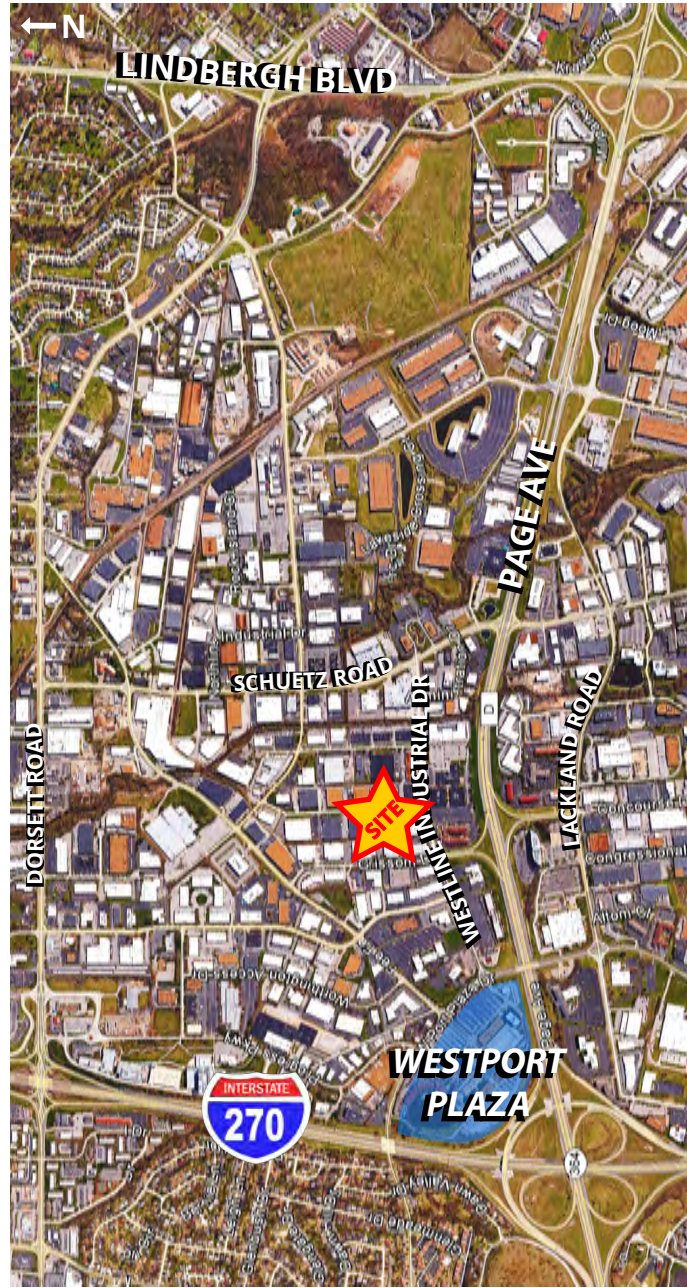
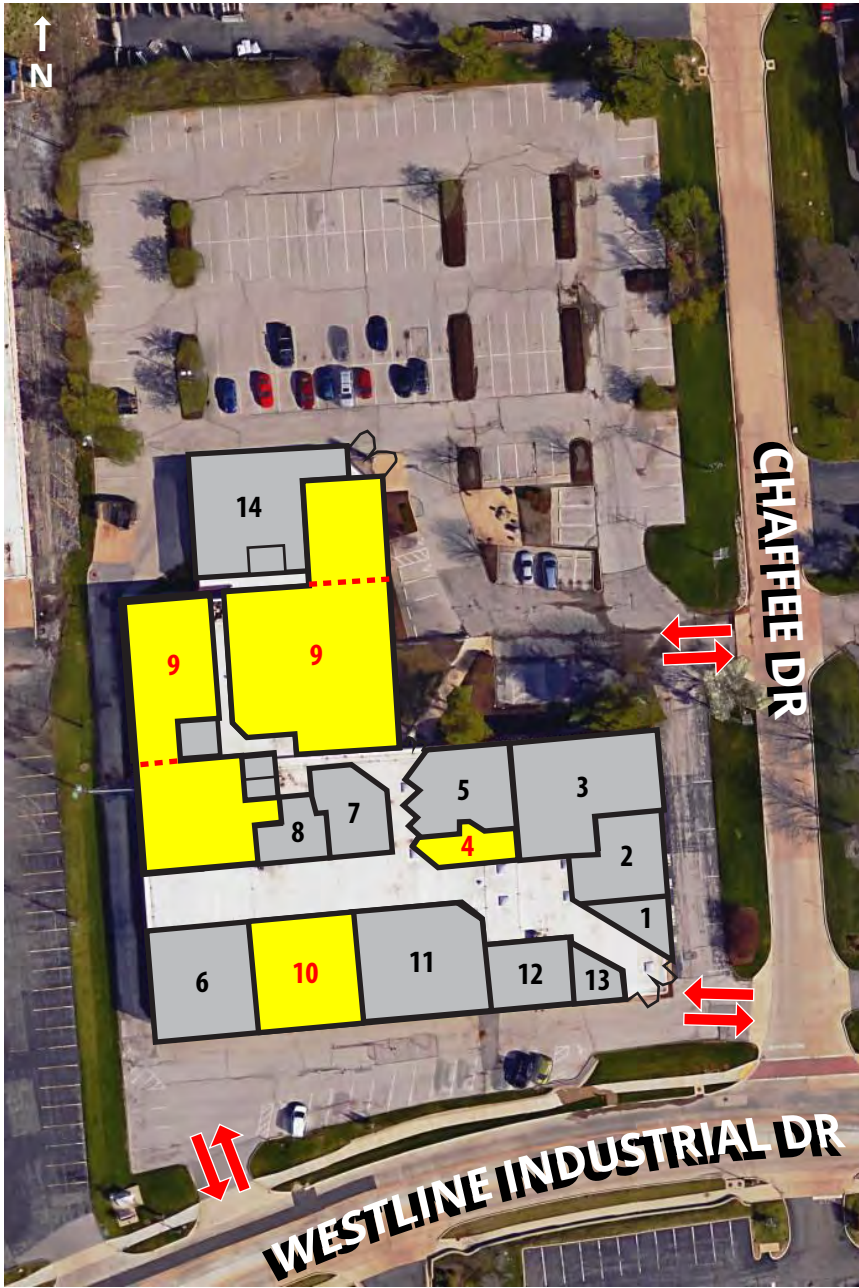
**TOTAL:**  
**13,370 SF**

**—** = represents the potential demising of the space



# 675 - 13,370 SF WESTPORT OFFICE AVAILABLE FOR LEASE

11861 WESTLINE INDUSTRIAL DRIVE | ST. LOUIS, MISSOURI 63146



NO.	SUITE	STATUS	SIZE (SF)
1	100	Occupied	665
2	150	Occupied	1,386
3	200	Occupied	3,103
4	250	AVAILABLE	675
5	300	Occupied	1,557
6	600	Occupied	2,844
7	660	Occupied	1,294

NO.	SUITE	STATUS	SIZE (SF)
8	670	Occupied	960
9	680/690/750/800/950	AVAILABLE	1,768-13,370
10	700A	AVAILABLE	3,730
11	700B-725	Occupied	5,054
12	850	Occupied	1,974
13	850A	Occupied	660
14	900	Occupied	3,049