

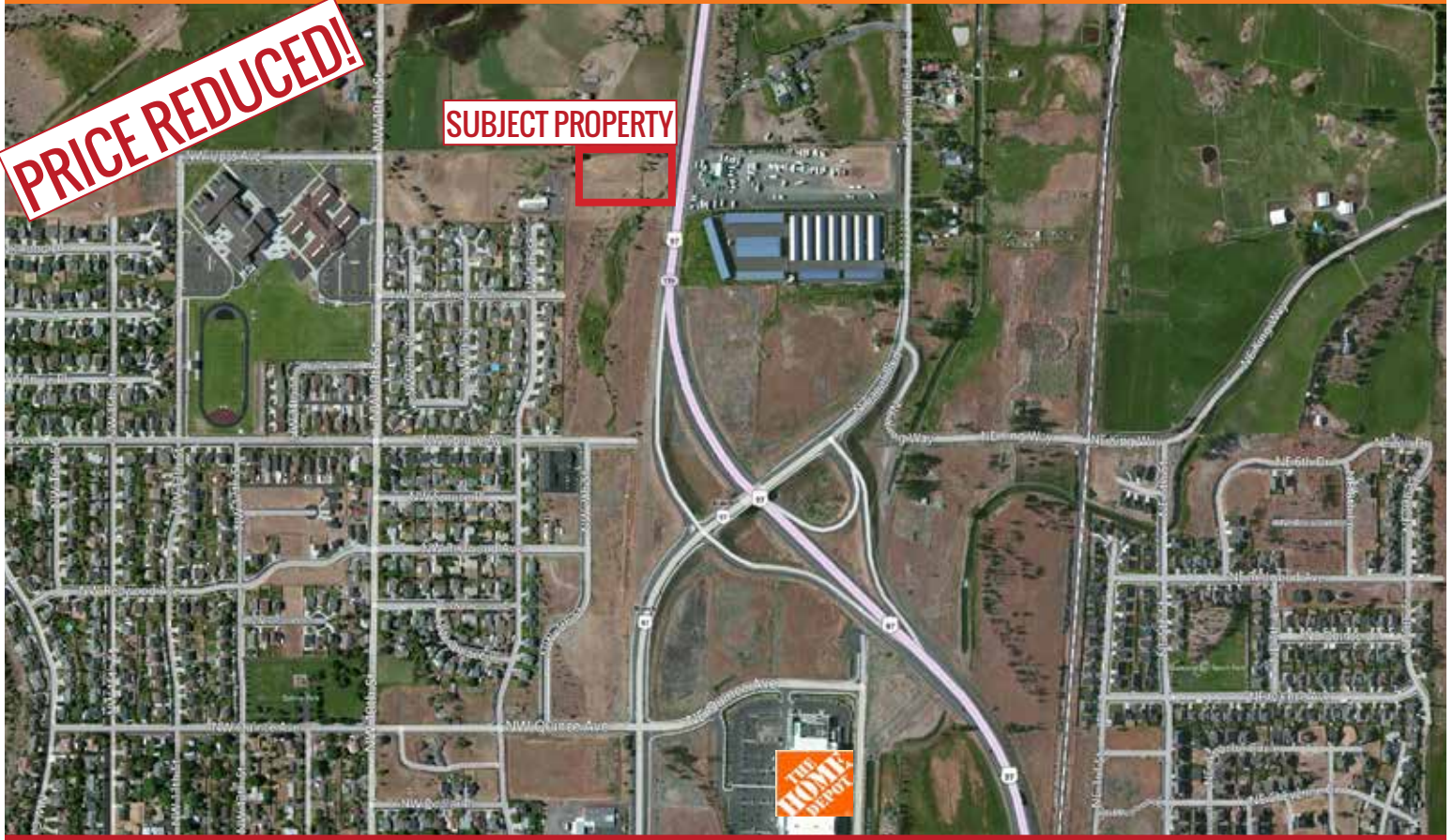
FOR SALE
COMMERCIAL LOT

3.25 ACRE COMMERCIAL LOT

3181 N. Hwy 97 | Redmond OR

PRICE REDUCED!

SUBJECT PROPERTY



This is the northern most commercial property available on Highway 97 at the north end of Redmond. As it would be the first stop for southbound traffic between Madras and Redmond the location is ideal for a travel services development containing a gas station, convenience store, and fast food restaurants. Approximately 275 feet of frontage on N Hwy 97. The parcel is level and visible from the highway. Clean Phase 1 environmental report.

Offered at \$495,000

- **3.25 Acres**
- **\$3.50/SF**
- **Zoned C-1 Strip Service Commercial**

Brian Fratzke, CCIM, Principal

brian@fratcommercial.com | O 541.306.4948 C 541.480.2526

Tom Tapia, CCIM

tom@fratcommercial.com | O 541.306.4948 C 541.390.2900



963 SW Simpson Ave., Suite 220 | Bend, OR 97702

541.306.4948 | www.fratzkecommercial.com

FOR SALE

3.25 ACRE COMMERCIAL LOT



**BRIAN
FRATZKE**

CCIM, PRINCIPAL

541.480.2526 [C]
BRIAN@FRATCOMMERCIAL.COM



**TOM
TAPIA**

CCIM

541.390-2900 [C]
TOM@FRATCOMMERCIAL.COM



With You Every Square Foot of the Way.

DISCLAIMER: This information is from sources we deem reliable, but for which we assume no liability. This is an exclusive listing. The information contained herein is given in confidence with the understanding that all negotiations pertaining to this property be handled through Fratzke Commercial Real Estate. All measurements are approximate.