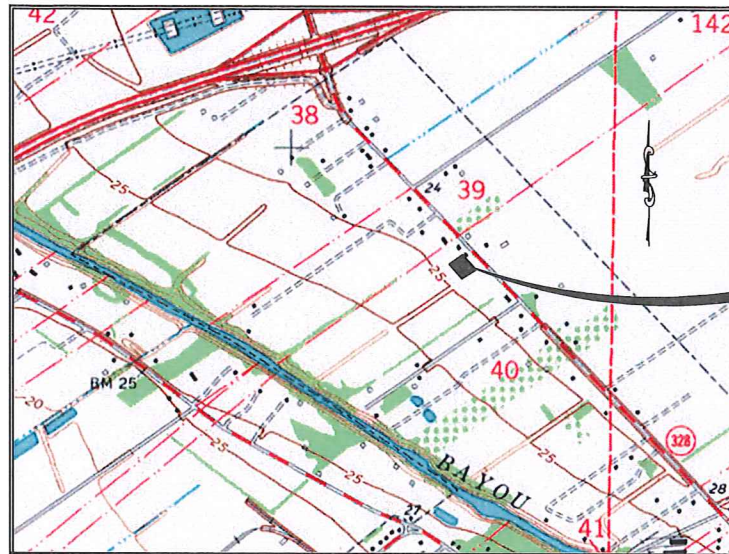
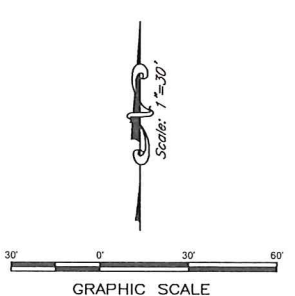
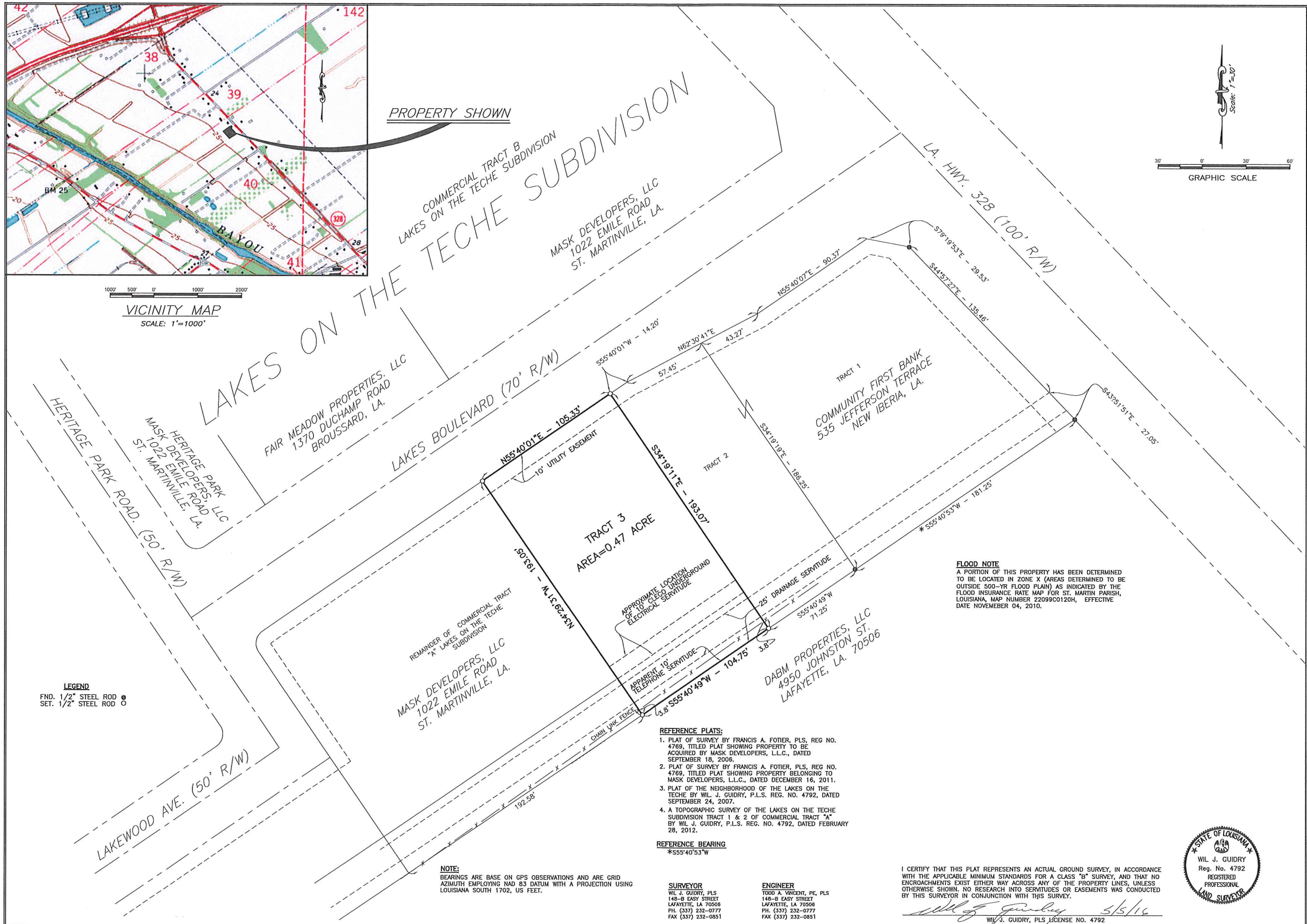


EXHIBIT "A"



VICINITY MAP  
SCALE: 1"=1000'



LEGEND  
FND. 1/2" STEEL ROD ○  
SET. 1/2" STEEL ROD ○

NOTE:  
BEARINGS ARE BASE ON GPS OBSERVATIONS AND ARE GRID AZIMUTH EMPLOYING NAD 83 DATUM WITH A PROJECTION USING LOUISIANA SOUTH 1702, US FEET.

- REFERENCE PLATS:
1. PLAT OF SURVEY BY FRANCIS A. FOTIER, PLS, REG NO. 4769, TITLED PLAT SHOWING PROPERTY TO BE ACQUIRED BY MASK DEVELOPERS, L.L.C., DATED SEPTEMBER 18, 2006.
  2. PLAT OF SURVEY BY FRANCIS A. FOTIER, PLS, REG NO. 4769, TITLED PLAT SHOWING PROPERTY BELONGING TO MASK DEVELOPERS, L.L.C., DATED DECEMBER 16, 2011.
  3. PLAT OF THE NEIGHBORHOOD OF THE LAKES ON THE TECHE BY WIL J. GUIDRY, P.L.S. REG. NO. 4792, DATED SEPTEMBER 24, 2007.
  4. A TOPOGRAPHIC SURVEY OF THE LAKES ON THE TECHE SUBDIVISION TRACT 1 & 2 OF COMMERCIAL TRACT "A" BY WIL J. GUIDRY, P.L.S. REG. NO. 4792, DATED FEBRUARY 28, 2012.

REFERENCE BEARING  
\*S55°40'53"W

SURVEYOR  
WIL J. GUIDRY, PLS  
148-B EASY STREET  
LAFAYETTE, LA 70506  
PH. (337) 232-0777  
FAX (337) 232-0851

ENGINEER  
TODD A. VINCENT, PE, PLS  
148-B EASY STREET  
LAFAYETTE, LA 70506  
PH. (337) 232-0777  
FAX (337) 232-0851

I CERTIFY THAT THIS PLAT REPRESENTS AN ACTUAL GROUND SURVEY, IN ACCORDANCE WITH THE APPLICABLE MINIMUM STANDARDS FOR A CLASS "B" SURVEY, AND THAT NO ENCROACHMENTS EXIST EITHER WAY ACROSS ANY OF THE PROPERTY LINES, UNLESS OTHERWISE SHOWN. NO RESEARCH INTO SERVITUDES OR EASEMENTS WAS CONDUCTED BY THIS SURVEYOR IN CONJUNCTION WITH THIS SURVEY.  
*Wil J. Guidry* 5/5/16  
WIL J. GUIDRY, PLS LICENSE NO. 4792



FLOOD NOTE  
A PORTION OF THIS PROPERTY HAS BEEN DETERMINED TO BE LOCATED IN ZONE X (AREAS DETERMINED TO BE OUTSIDE 500-YR FLOOD PLAIN) AS INDICATED BY THE FLOOD INSURANCE RATE MAP FOR ST. MARTIN PARISH, LOUISIANA, MAP NUMBER 22099C0120H, EFFECTIVE DATE NOVEMBER 04, 2010.

NO.	DATE	DESCRIPTION	BY

NO.	DATE	DESCRIPTION	BY

SHEET DESCRIPTION  
PARTITION PLAT

**Sellers & Associates, Inc.**  
ENGINEERS  
148-B Easy Street, Lafayette, LA 70506  
(337) 232-0777

A PARTITION PLAT OF  
**THE LAKES ON THE TECHE SUBDIVISION**  
TRACT 3 OF COMMERCIAL TRACT "A"  
LOCATED IN SECTION 40, T-9-S, R-5-E  
CITY OF BREAUX BRIDGE  
ST. MARTIN PARISH, LOUISIANA

SURVEYOR WIL J. GUIDRY
DRAWN BY T. COURVILLE
CHECKED BY WIL J. GUIDRY
DATE MAY 5, 2016
SCALE 1" = 30'
PROJECT NO. 8826-01
FILE PLAT
SHEET 1
OF 1 SHEETS