

ALDARRA DISTRIBUTION CENTER

For Lease

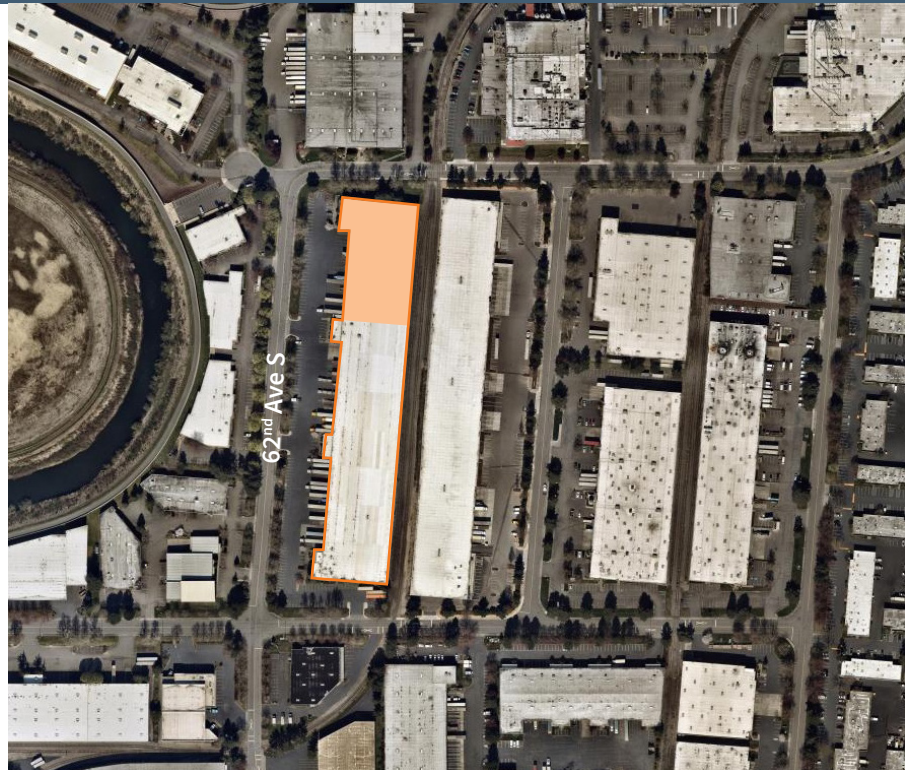


57,377 SF

19032 62nd Avenue South, Kent, WA

Property Highlights

- 57,377 SF total
- 3,912 SF existing office
- Endcap space
- 24' clear height
- 15 Dock-high doors
- 1 Grade-Level door
- Class A distribution building
- Potential to secure truck court
- Call brokers for rates
- Available October 1, 2019



Chris Spofford
Executive Vice President
+1 206 607 1731
chris.spofford@am.jll.com

David Cahill
Vice President
+1 425 974 4002
david.cahill@am.jll.com

Owned & managed by:



