

Waynesville Pavilion

Great Smokey Mountain Expressway & Russ Avenue
Waynesville, NC 28786

Bell Moore
GROUP, INC.



MAJOR-A FRONT ELEVATION (RUSS AVENUE)



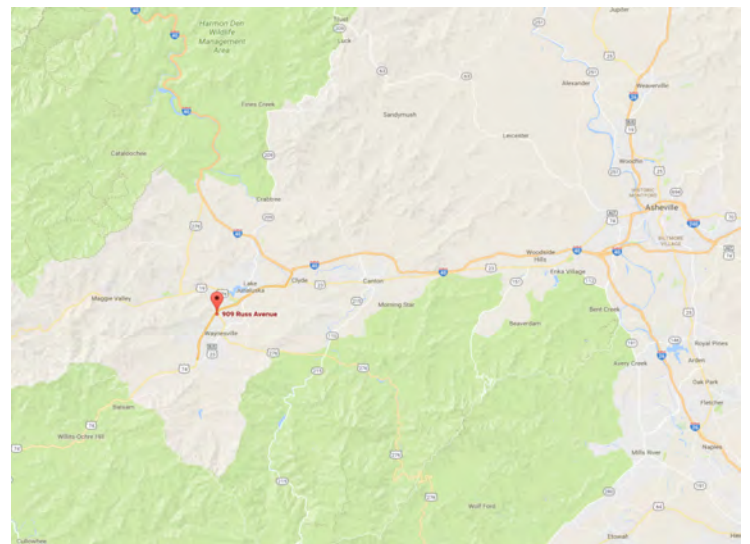
WAYNESVILLE RETAIL PRELIMINARY FRONT ELEVATION

PROPERTY HIGHLIGHTS:

- Approved Publix
- Spaces range from 1,200 to 7,200 square feet
- Site located at two primary arteries, US 276 & Smokey Mountain Expressway
- Premier visibility at the gateway to Waynesville and Lake Junaluska
- Waynesville is the county seat of Haywood County

TRAFFIC COUNTS:

- Great Smokey Mountain Expressway (US 74) - 33,000 VPD
- Russ Avenue (US 276) - 23,000 VPD



DEMOGRAPHICS (2017):	3 Mile	5 Mile	10 Mile
Population:	15,416	29,027	56,237
Average HH Income:	\$63,479	\$62,779	\$60,698
Daytime Population:	12,360	15,850	22,889

DEVELOPED BY

MAB American

**FOR MORE INFORMATION
CONTACT:**

Rianne Bell
(704) 529-6720 ext. 302
riane@bellmooregroup.com

*No warranty or representation, expressed or implied, is made as to the accuracy of the information contained herein, and same is submitted subject to errors, omissions, change of price, rental or other conditions, withdrawal without notice, and to any special listing conditions imposed by our principals.

Waynesville Pavilion

Great Smokey Mountain Expressway & Russ Avenue

Waynesville, NC 28786



Waynesville Pavilion

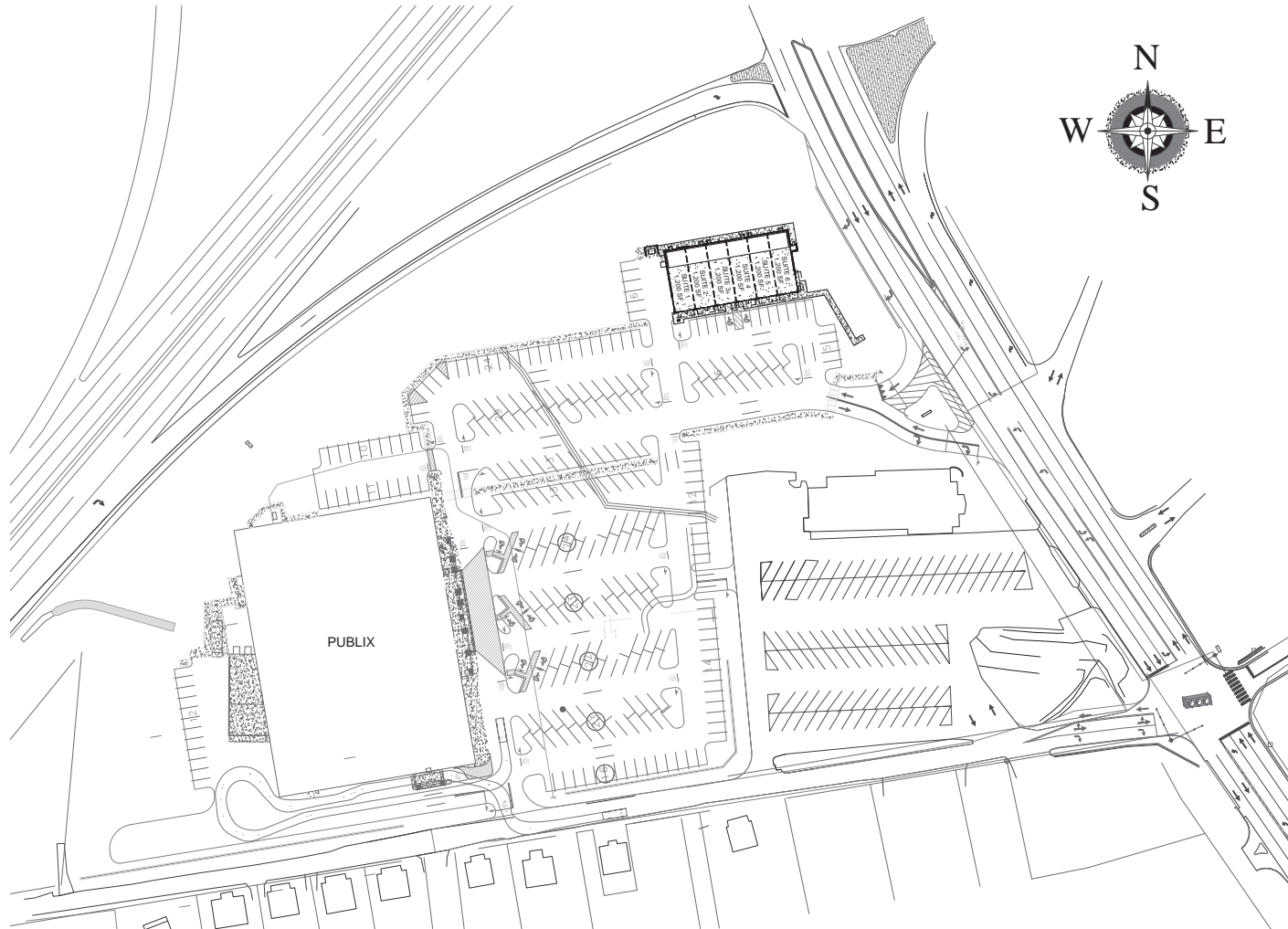
Great Smokey Mountain Expressway & Russ Avenue

Waynesville, NC 28786



Waynesville Pavilion

Great Smokey Mountain Expressway & Russ Avenue
Waynesville, NC 28786



1 LEASING SITE PLAN
LP-102 SCALE: 1" = 50'-0"

MaxDesignGroup
Architecture - Planning - Interiors
2862 Buford Highway
Suite 106
Duluth, Georgia 30096
Tel: 770-910-9740
Cell: 770-530-5245
Email: maxian@maxdesigngp.com

THIS DRAWING IS THE PROPERTY OF MAXDESIGN GROUP, AND IS NOT TO BE REPRODUCED IN WHOLE OR IN PART. IT IS NOT TO BE USED ON ANOTHER PROJECT AND SHALL BE RETURNED UPON REQUEST.

PROFESSIONAL SEAL:

PROJECT TITLE:
WAYNESVILLE PAVILION
BUILDING 'A'
WAYNESVILLE, NC

PROJECT INFO:
RUSS AVENUE AT FRAZIER STREET
WAYNESVILLE, NC

OWNER:
MAB AMERICAN MANAGEMENT, LLC
525 N. TRYON STREET, SUITE 1600
CHARLOTTE, NC 28202

PRINT RECORD

Description	Date
PERMIT SUBMITAL	8/22/2017
CITY COMMENTS	12/19/2017

REVISION

No.	Description	Date

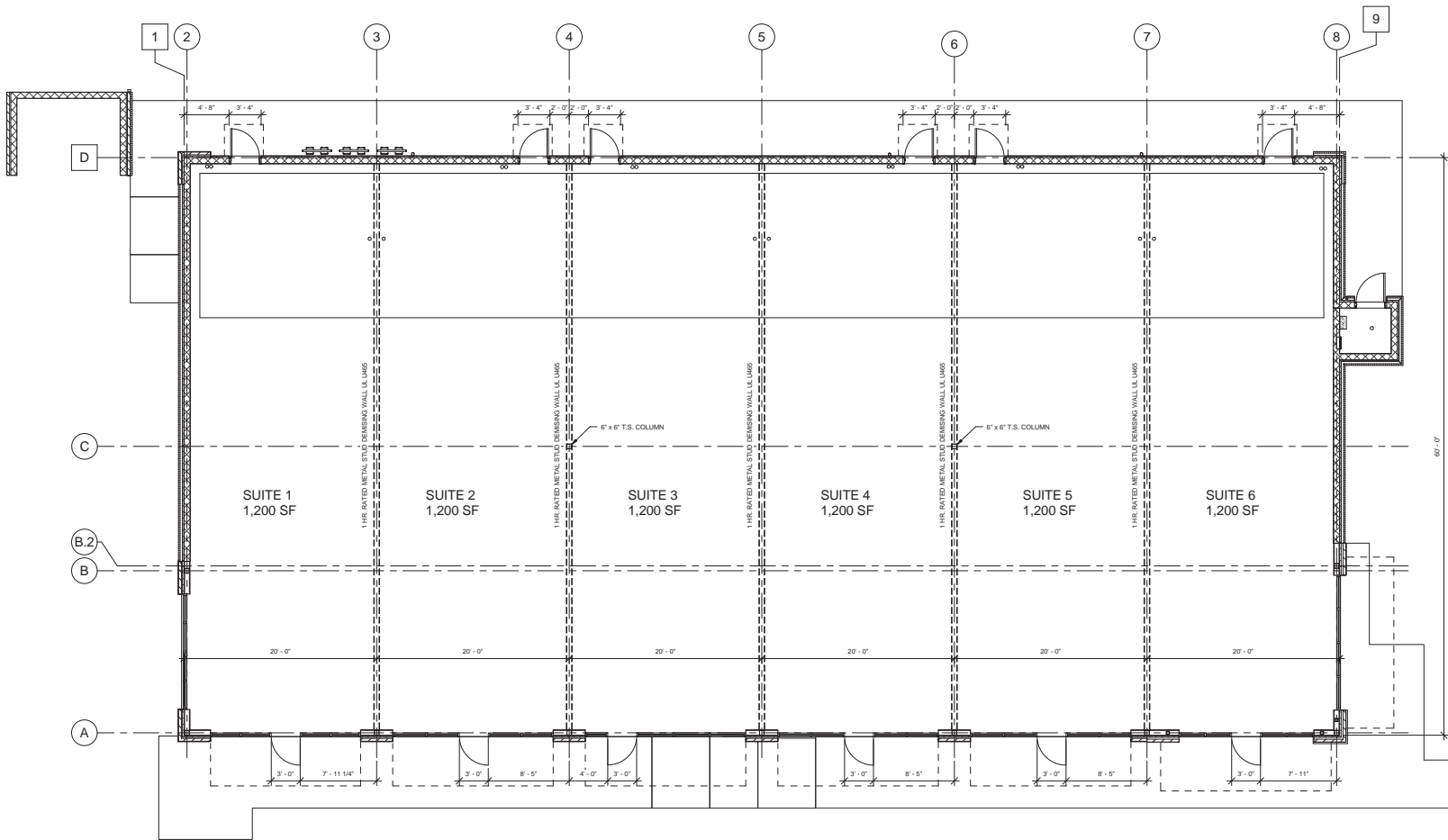
LEASING SITE PLAN

Project number	D17-110
Date	8/22/2017
Drawn by	B.C.R.
Checked by	R.M.M.

LP-102
Scale: 1" = 50'-0"
ISSUED FOR CONSTRUCTION

Waynesville Pavilion

Great Smokey Mountain Expressway & Russ Avenue
Waynesville, NC 28786



1 LEASING PLAN
LP-101 SCALE: 3/16" = 1'-0"

MaxDesignGroup
Architecture - Planning - Interiors
2862 Buford Highway
Suite 106
Duluth, Georgia 30096
Tel: 770-910-9740
Cell: 770-530-5245
Email: maxian@maxdesigngp.com

THIS DRAWING IS THE PROPERTY OF MAXDESIGN GROUP, AND IS NOT TO BE REPRODUCED IN WHOLE OR IN PART. IT IS NOT TO BE USED ON ANOTHER PROJECT AND SHALL BE RETURNED UPON REQUEST.

PROFESSIONAL SEAL:

PROJECT TITLE:
WAYNESVILLE PAVILION
BUILDING 'A'
WAYNESVILLE, NC

PROJECT INFO:
RUSS AVENUE AT FRAZIER STREET
WAYNESVILLE, NC

OWNER:
MAB AMERICAN MANAGEMENT, LLC
525 N. TRYON STREET, SUITE 1600
CHARLOTTE, NC 28202

PRINT RECORD

Description	Date
PERMIT SUBMITTAL	8/22/2017
CITY COMMENTS	12/19/2017

REVISION

No.	Description	Date

LEASING PLAN

Project number	D17-110
Date	8/22/2017
Drawn by	B.C.R.
Checked by	R.M.M.

LP-101

Scale: 3/16" = 1'-0"

ISSUED FOR CONSTRUCTION

9/24/2018 8:52:27 AM