

Office For Lease  
**The Symes Building**  
 Denver, Colorado



**NAI Shames Makovsky**

For Lease  
**Modern Office Suites**  
**Historic Icon**



**Property Facts**

Available Suites:	
Suite 200	12,518 SF
Suite 400	3,547 SF
Suite 430	1,206 SF
Suite 605	2,378 SF
Suite 800	11,066 SF
Building SF:	94,793 SF
Year Built / Renov.:	1906 / 2016
Operating Expenses:	\$7.63/SF (2017)



For more information:

**Connor Donahue**

720 881 7539  
 cdonahue@shamesmakovsky.com

**Dorit Fischer**

303 565 3025  
 dfischer@shamesmakovsky.com

**Trent Rice**

303 565 3033  
 trice@shamesmakovsky.com

1400 Glenarm Place, Suite 100  
 Denver, CO 80202  
 303 534 5005

[naishamesmakovsky.com](http://naishamesmakovsky.com)

**NAI Shames Makovsky**

**The Symes Building**

820 16th Street | Denver, Colorado 80202

**Property Overview**

- Modern office suites in historic downtown office building available for lease
- Open concept layouts, modern finishes, and incredible views of Downtown Denver
- Premier location surrounded by fine dining, upscale hotels, shopping, entertainment venues, and more
- Multiple RTD Light Rail Stations within short walking distance and just half a mile from Union Station
- On-site property management, new HVAC, card key access, and upgraded common area finishes

**Lease Rates: \$26.00-\$28.00/SF FSG**

NO WARRANTY OR REPRESENTATION, EXPRESS OR IMPLIED, IS MADE AS TO THE ACCURACY OF THE INFORMATION CONTAINED HEREIN, AND THE SAME IS SUBMITTED SUBJECT TO ERRORS, OMISSIONS, CHANGE OF PRICE, RENTAL OR OTHER CONDITIONS, PRIOR SALE, LEASE OR FINANCING, OR WITHDRAWAL WITHOUT NOTICE, AND OF ANY SPECIAL LISTING CONDITIONS IMPOSED BY OUR PRINCIPALS. NO WARRANTIES OR REPRESENTATIONS ARE MADE AS TO THE CONDITION OF THE PROPERTY OR ANY HAZARDS CONTAINED THEREIN ARE ANY TO BE IMPLIED.

For more information:

**Connor Donahue**

720 881 7539  
 cdonahue@shamesmakovsky.com

**Dorit Fischer**

303 565 3025  
 dfischer@shamesmakovsky.com

**Trent Rice**

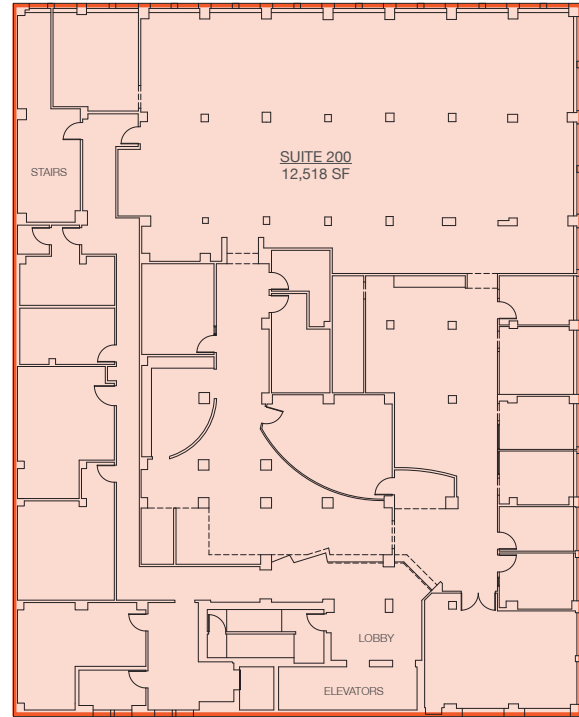
303 565 3033  
 trice@shamesmakovsky.com

1400 Glenarm Place, Suite 100  
 Denver, CO 80202  
 303 534 5005

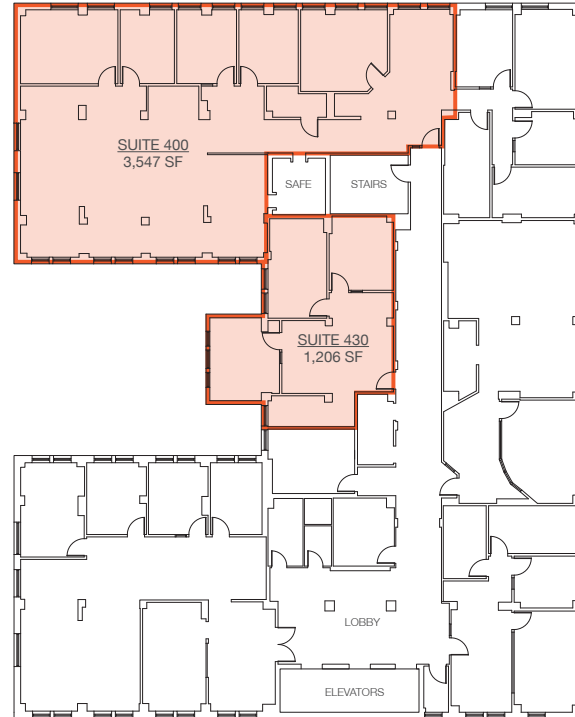
[naishamesmakovsky.com](http://naishamesmakovsky.com)

For Lease  
**820 16th Street**  
Denver, Colorado

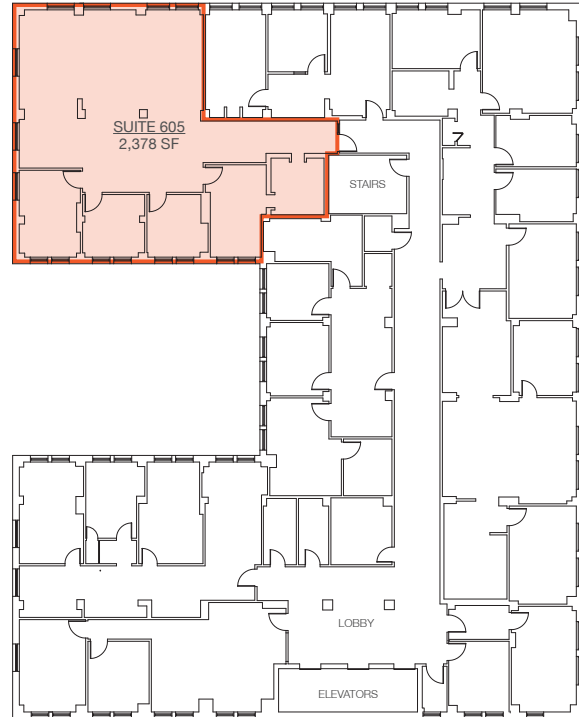
**2nd Floor**



**4th Floor**



**6th Floor**



**8th Floor**

