

BOUTIQUE OFFICE SPACE FOR LEASE IN THE HEART OF WESTWOOD VILLAGE



1051 WESTWOOD BLVD
LOS ANGELES, CA 90024



COMMERCIAL
ASSET GROUP

These materials are based on information and content provided by others, which we believe are accurate. No guarantee, warranty or representation is made by Commercial Asset Group, Inc. or its personnel. All interested parties must independently verify accuracy and completeness. As well, any projections, forecasts, opinions, or estimates are used for example only and do not represent the current or future performance of the identified property. Environmental, legal and toxic substance advisors should conduct a careful investigation of the property and its suitability for the intended use. The property is subject to prior lease, sale, change in price, or withdrawal from the market without notice.

SPACE SIZE

STE 217: ±1,115 SF

RENTAL RATE

\$3.75 PSF

MODIFIED GROSS

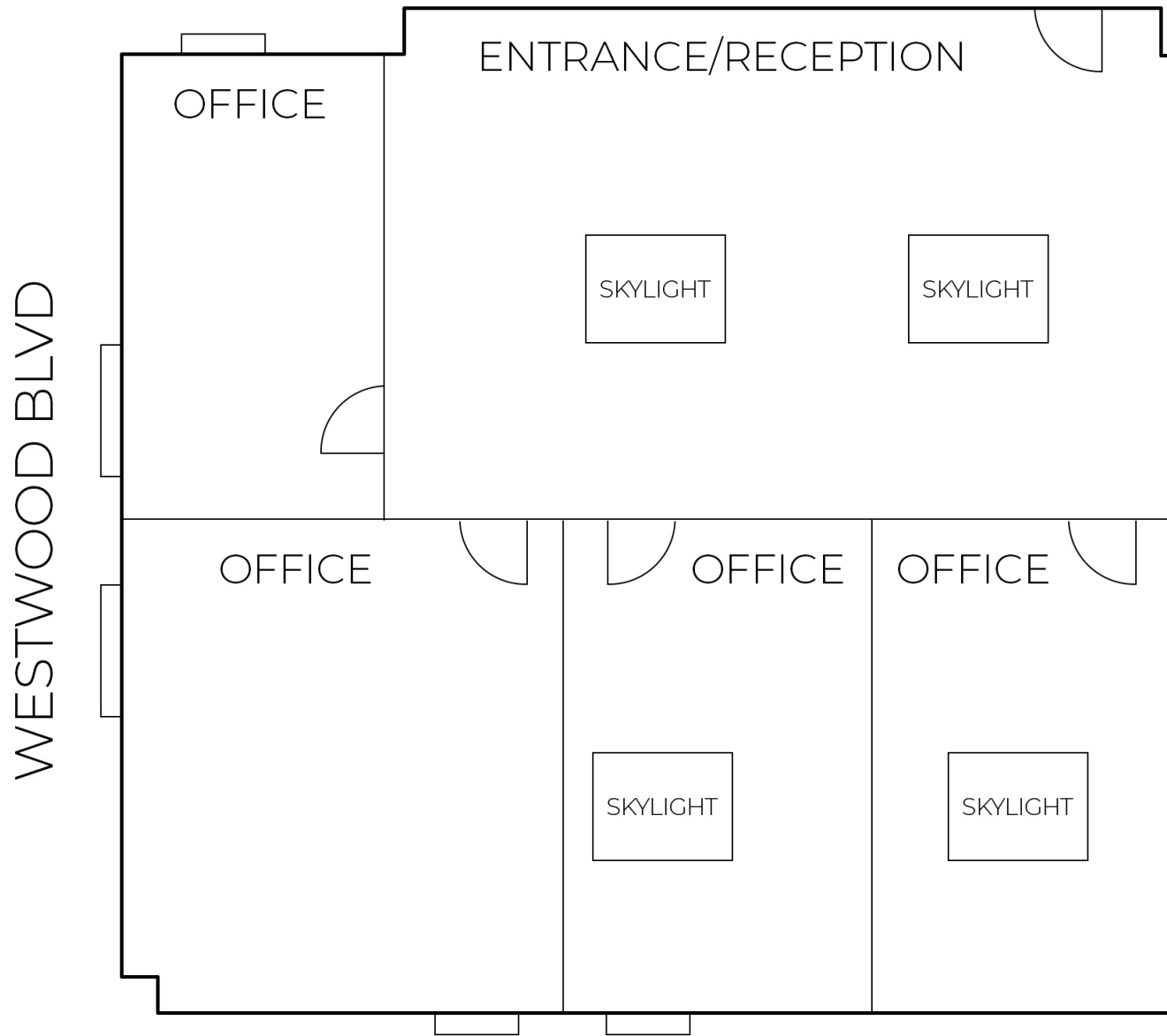
AVAILABILITY

IMMEDIATELY

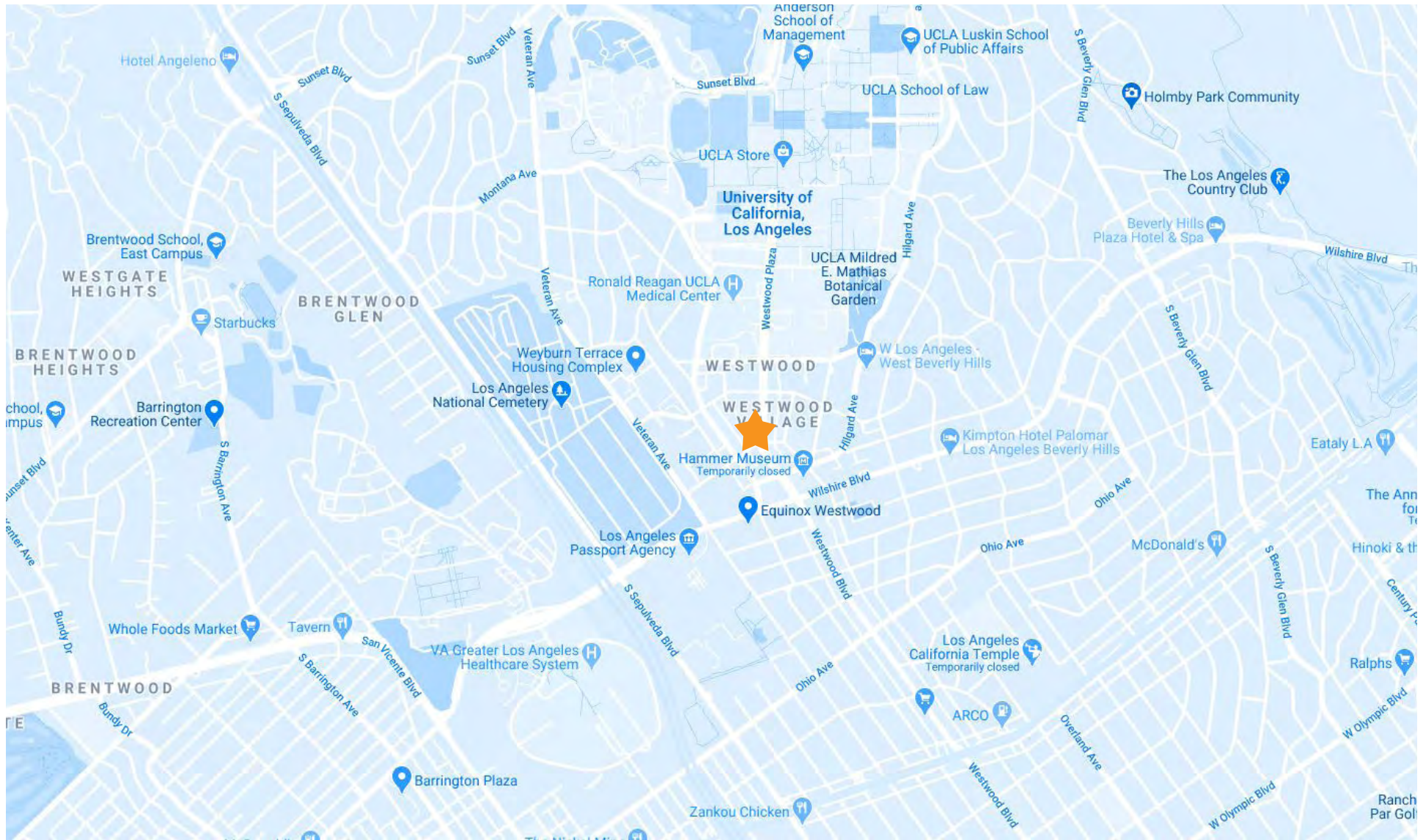
- RARE OPPORTUNITY FOR OFFICE SPACE IN THE HISTORIC WESTWOOD DOME BUILDING
- SEVERAL SKYLIGHTS THROUGHOUT THE SPACE: EXCELLENT NATURAL LIGHT
- 4 PRIVATE OFFICES AND LARGE RECEPTION AREA
- SPACE HAS BRAND NEW PAINT AND CARPETING
- DEAD CENTER OF THE WESTWOOD VILLAGE RETAIL CORRIDOR, HOME TO SEVERAL RETAIL, FOOD & SERVICE AMENITIES



INTERIOR PHOTOS - SUITE 217



FLOOR PLAN SUITE 217



MAP



AERIAL



COMMERCIAL
ASSET GROUP

JEREMY WINTNER

DIRECTOR
P 310.272.7390
E JEREMY@CAG-RE.COM
LIC. 02062054

DAVID ASCHKENASY

EXECUTIVE VICE PRESIDENT
P 310.272.7381
E DAVIDA@CAG-RE.COM
LIC. 01714442

COMMERCIAL ASSET GROUP

1801 CENTURY PARK EAST, STE 1550
LOS ANGELES, CA 90067
P 310.275.8222 F 818.385.1470
WWW.CAG-RE.COM LIC. 01876070