



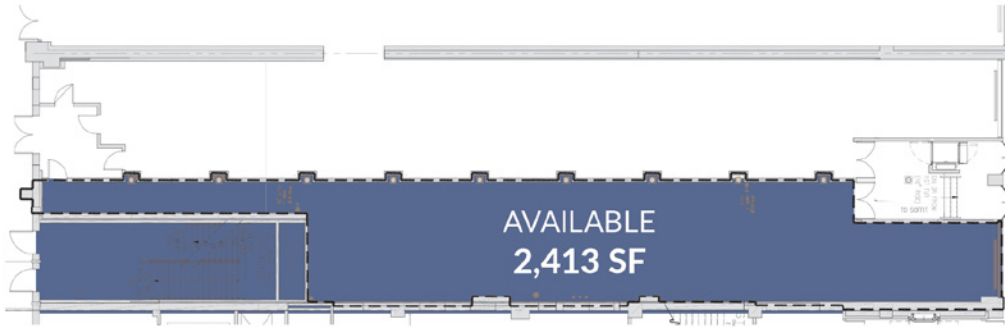
28

SOUTH WABASH AVENUE

THE SULLIVAN CENTER
LOOP | CHICAGO, IL

RETAIL OPPORTUNITY

RETAIL SPACE AVAILABLE
28 S. WABASH AVENUE
 Loop | Chicago, IL



SPACE AVAILABLE
 2,413 SF

SITE SUMMARY

- Rare 2nd generation restaurant space.
- The Sullivan Center, a one million square foot retail and office complex located in the heart of the Center Loop District in Downtown Chicago, is one of the city's iconic structures and home to a number of retail and global office users.
- One block south of new CTA Washington/Wabash station, 10,000 riders daily.
- One block west of Millennium Park, Chicago's most popular tourist attraction with 25 million visitors per year.
- Daytime populations of 255,000 within 0.5-mile radius.
- Located in the East Loop, surrounded by 135 million square feet of office and 65,000 students.

SURROUNDING NEIGHBORS



SURROUNDING HOTELS



POPULATION DENSITY

14,170	½ Mile
67,489	1 Mile
183,656	2 Mile

DAYTIME EMPLOYMENT

255,518	½ Mile
327,646	1 Mile
417,706	2 Mile

AVERAGE HH INCOME

\$127,839	½ Mile
\$131,334	1 Mile
\$124,001	2 Mile



RETAIL SPACE AVAILABLE
28 S. WABASH AVENUE
 Loop | Chicago, IL



CONTACT **ANTHONY CAMPAGNI**
 ac@arcgrp.com
 (630) 908-5695

ELAN RASANSKY
 elan@arcgrp.com
 (630) 908-5696

© 2020 ARC Real Estate. All information is from sources believed reliable, not independently verified, and thus subject to errors, omissions, and modifications such as price, listing, square footage, rates and commissions. All information, estimates and projections subject to change, market assumptions, unknown facts and conditions, and future potentialities. ARC Real Estate makes no express or implied representations or warranties, as facts and results may vary materially from all information, estimates and projections. All renderings presented are conceptual.

A·R·C
 REAL ESTATE