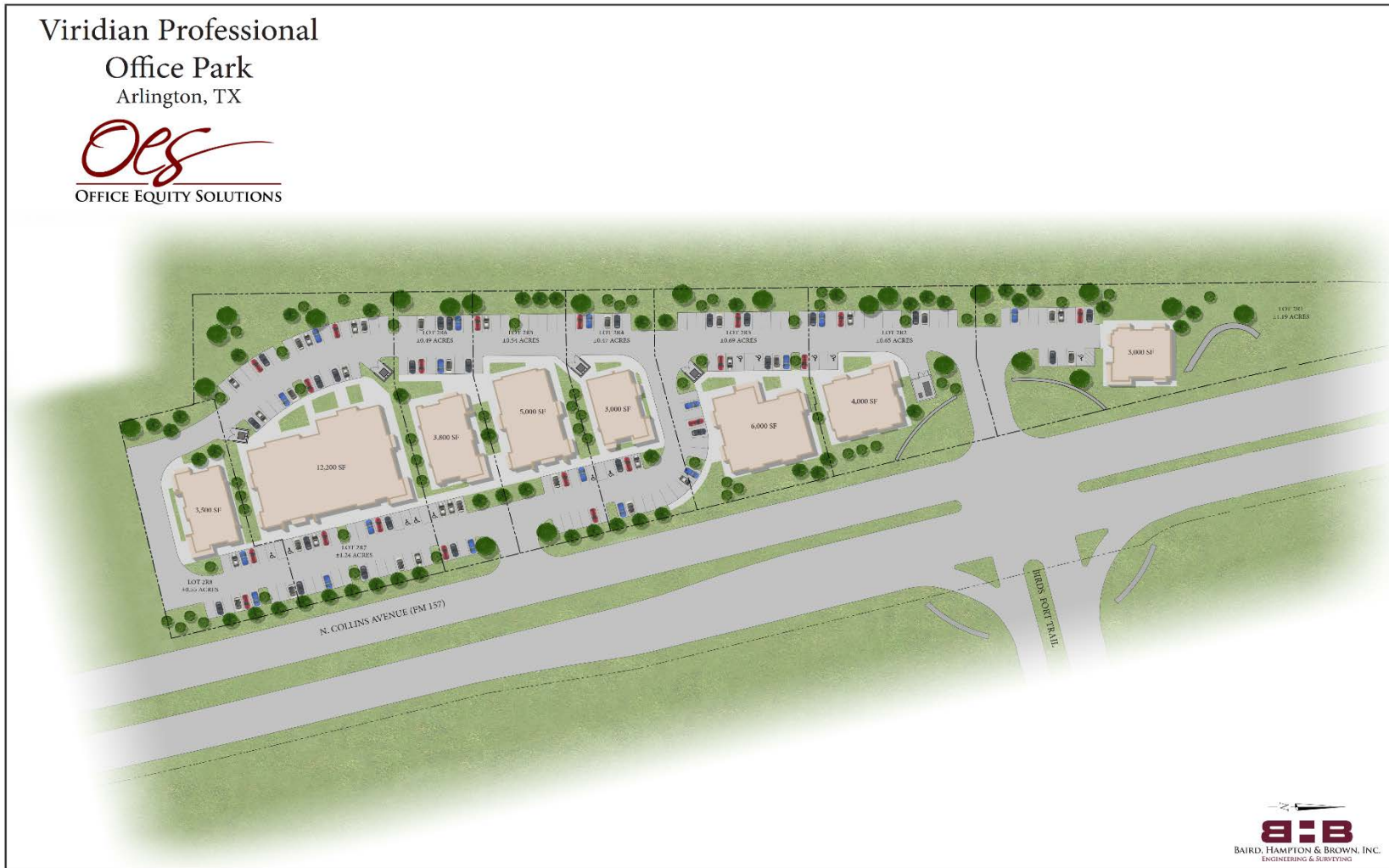


# Viridian Medical Offices

## FM 157 & N. Collins Street, Arlington Tx 76155

Viridian Professional  
Office Park  
Arlington, TX



FOR MORE INFORMATION:

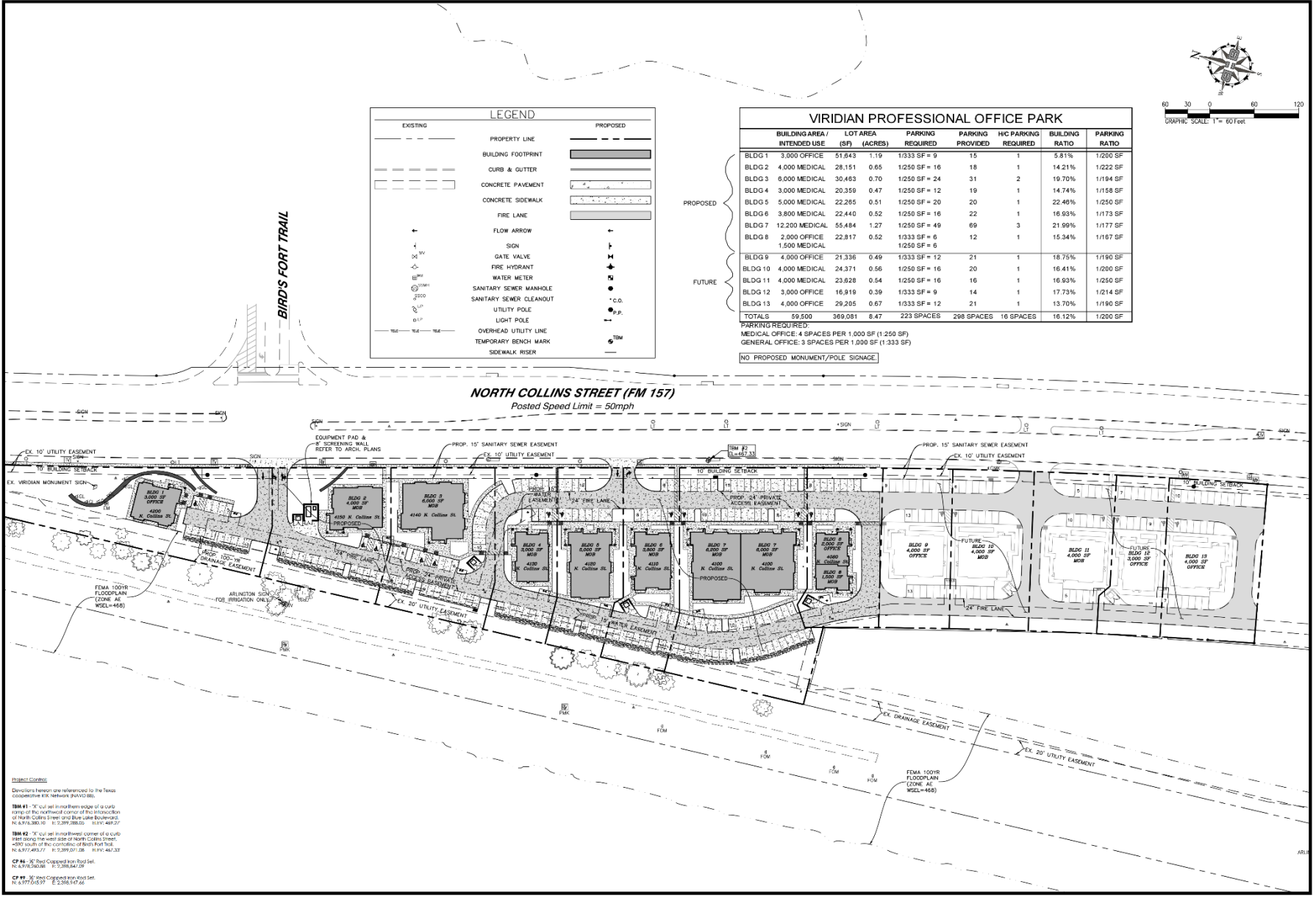
T 817-416-3981

F 817-416-8372

[WWW.OFFICEEQUITYSOLUTIONS.COM](http://WWW.OFFICEEQUITYSOLUTIONS.COM)



# Viridian Medical Offices FM 157 & N. Collins Street, Arlington Tx 76155



**BIB**  
BIRD, HAMPTON & BROWN  
ENGINEERING & SURVEYING  
4000 State Hwy 380, Suite 180  
Coppell, TX 75011  
oeb@bibha.com 817.251.5200  
bibha.com  
TREC'S FRM #1001302

**OFFICE EQUITY SOLUTIONS**  
365 MIRON, SUITE A  
SOUTHALKE, TX 76092  
**VIRIDIAN PROFESSIONAL OFFICE PARK, LOTS 1-8**  
4080-4200 N. COLLINS ST., ARLINGTON, TX

**SITE DEVELOPMENT PLAN**

NO.	DISCUSSION	DATE

THIS DOCUMENT IS RELEASED FOR INTERIM REVIEW UNDER THE AUTHORITY OF Konstantine Babinos, PE TX 07022. IT IS NOT INTENDED FOR CONSTRUCTION, BIDDING OR PERMIT PURPOSES.

PROJECT NUMBER: 2016 720 000  
DATE: 2/24/2017 DRAWN BY: DMJ  
DESIGN BY: JMT CHECKED BY: RB

SHEET  
**6**  
6 of 28

# Viridian Medical Offices

FM 157 & N. Collins Street, Arlington Tx 76155



## Property Overview

Lease Rate: Call for Rates / NNN

Property Type: Medical / Retail

Commercial zoning, multi-use and adjacent to beautiful Lake Viridian.

Close to attractions such as: AT&T Stadium, Globe Life Park, Six Flags Over Texas.

Viridian Medical Office is located on the NW corner of Collins Avenue and Blue Lake Blvd, in Arlington Texas.

On the edge of the 2000+ acre beautifully master planned community with 600 acres of lush parks and immaculately landscaped open space.

This site is a great location for a medical or general medical office complex. The Viridian Community will feed into the HEB

Current tenants include, Family Healthcare, Physical Therapy, Orthodontist, Optometrist, Wound Care and Hyperbaric Clinic, to name a few.

FOR MORE INFORMATION:

T 817-416-3981

F 817-416-8372

[WWW.OFFICEEQUITYSOLUTIONS.COM](http://WWW.OFFICEEQUITYSOLUTIONS.COM)

# Viridian Medical Offices FM 157 & N. Collins Street, Arlington Tx 76155



**Viridian Professional Offices**

Print #170717556

Date: 07/17/17

Lat/Lon: 32.799860 -97.098531

Order No. 62585

 Aerial Photography, Inc. 954-568-0484

FOR MORE INFORMATION:

T 817-416-3981

F 817-416-8372

[WWW.OFFICEEQUITYSOLUTIONS.COM](http://WWW.OFFICEEQUITYSOLUTIONS.COM)

# Viridian Medical Offices

## FM 157 & N. Collins Street, Arlington Tx 76155



**Viridian Professional Offices**

Print #170717557  
Date: 07/17/17  
Lat/Lon: 32.799860 -97.098531  
Order No. 62585  
Aerial Photography, Inc. 954-568-0484

**FOR MORE INFORMATION:**  
T 817-416-3981  
F 817-416-8372  
[WWW.OFFICEEQUITYSOLUTIONS.COM](http://WWW.OFFICEEQUITYSOLUTIONS.COM)

# Viridian Medical Offices FM 157 & N. Collins Street, Arlington Tx 76155



**Viridian Professional Offices**

Print #170717558  
Date: 07/17/17  
Lat/Lon: 32.799860 -97.098531  
Order No. 62585  
 Aerial Photography, Inc. 954-568-0484

FOR MORE INFORMATION:

T 817-416-3981

F 817-416-8372

[WWW.OFFICEEQUITYSOLUTIONS.COM](http://WWW.OFFICEEQUITYSOLUTIONS.COM)

# Viridian Medical Offices

## FM 157 & N. Collins Street, Arlington Tx 76155



FOR MORE INFORMATION:

T 817-416-3981

F 817-416-8372

[WWW.OFFICEEQUITYSOLUTIONS.COM](http://WWW.OFFICEEQUITYSOLUTIONS.COM)

# Viridian Medical Offices

## FM 157 & N. Collins Street, Arlington Tx 76155



## VIRIDIAN MEDICAL OFFICE DEVELOPMENT

*N. Collins Street & Blue Lake Blvd, Arlington, Texas 76005*



FOR MORE INFORMATION:

T 817-416-3981

F 817-416-8372

[WWW.OFFICEEQUITYSOLUTIONS.COM](http://WWW.OFFICEEQUITYSOLUTIONS.COM)



# Viridian Medical Offices

## FM 157 & N. Collins Street, Arlington Tx 76155



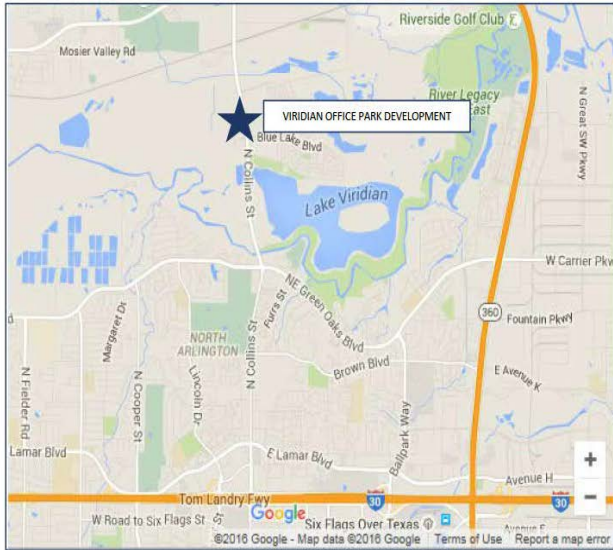
FOR MORE INFORMATION:

T 817-416-3981

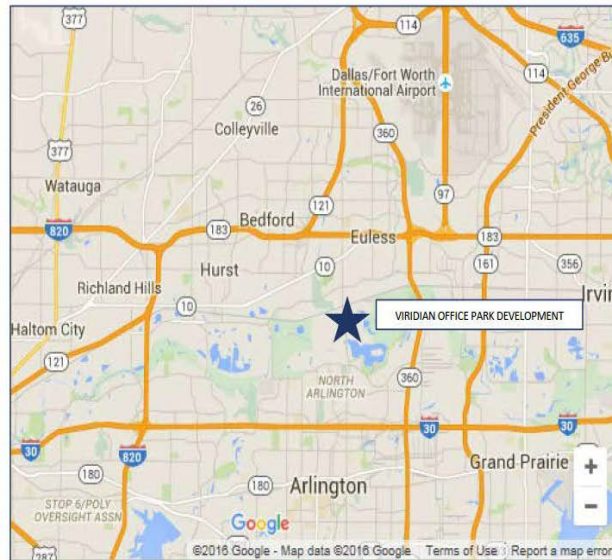
F 817-416-8372

[WWW.OFFICEEQUITYSOLUTIONS.COM](http://WWW.OFFICEEQUITYSOLUTIONS.COM)

# Viridian Medical Offices FM 157 & N. Collins Street, Arlington Tx 76155



LOCAL MAP



REGIONAL MAP

FOR MORE INFORMATION:

T 817-416-3981

F 817-416-8372

[WWW.OFFICEEQUITYSOLUTIONS.COM](http://WWW.OFFICEEQUITYSOLUTIONS.COM)