

26160 GROESBECK HIGHWAY  
WARREN, MICHIGAN

RETAIL/LAND FOR SALE  
1,559 Square Feet/0.90 Acres Available



**SIGNATURE  
ASSOCIATES**  
KNOW SIGNATURE | KNOW RESULTS

**LAND/REDEVELOPMENT**



## PROPERTY FEATURES

- 1,559 available square feet
- 0.90 acres available
- Zoned C-3
- Sale Price: \$299,000 (\$191.79/sq.ft.)

**Comments:** Possible redevelopment or user opportunity for existing building. Easy access off Groesbeck Highway near I-696.



For more information, please contact:

**PETER VANDERKAAY**  
(248) 359 3837

[pvanderkaay@signatureassociates.com](mailto:pvanderkaay@signatureassociates.com)

**PAUL SAAD**  
(248) 359 0652

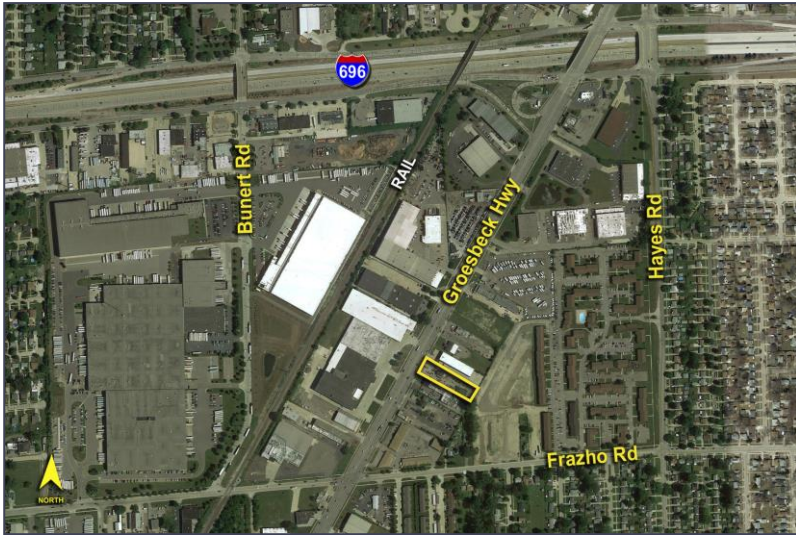
[psaad@signatureassociates.com](mailto:psaad@signatureassociates.com)

**SIGNATURE ASSOCIATES**  
One Towne Square, Suite 1200  
Southfield, MI 48076  
[www.signatureassociates.com](http://www.signatureassociates.com)

# 26160 Groesbeck Highway – Warren, Michigan

Retail/Land For Sale

1,559  
Square Feet/  
0.90  
Acres  
AVAILABLE

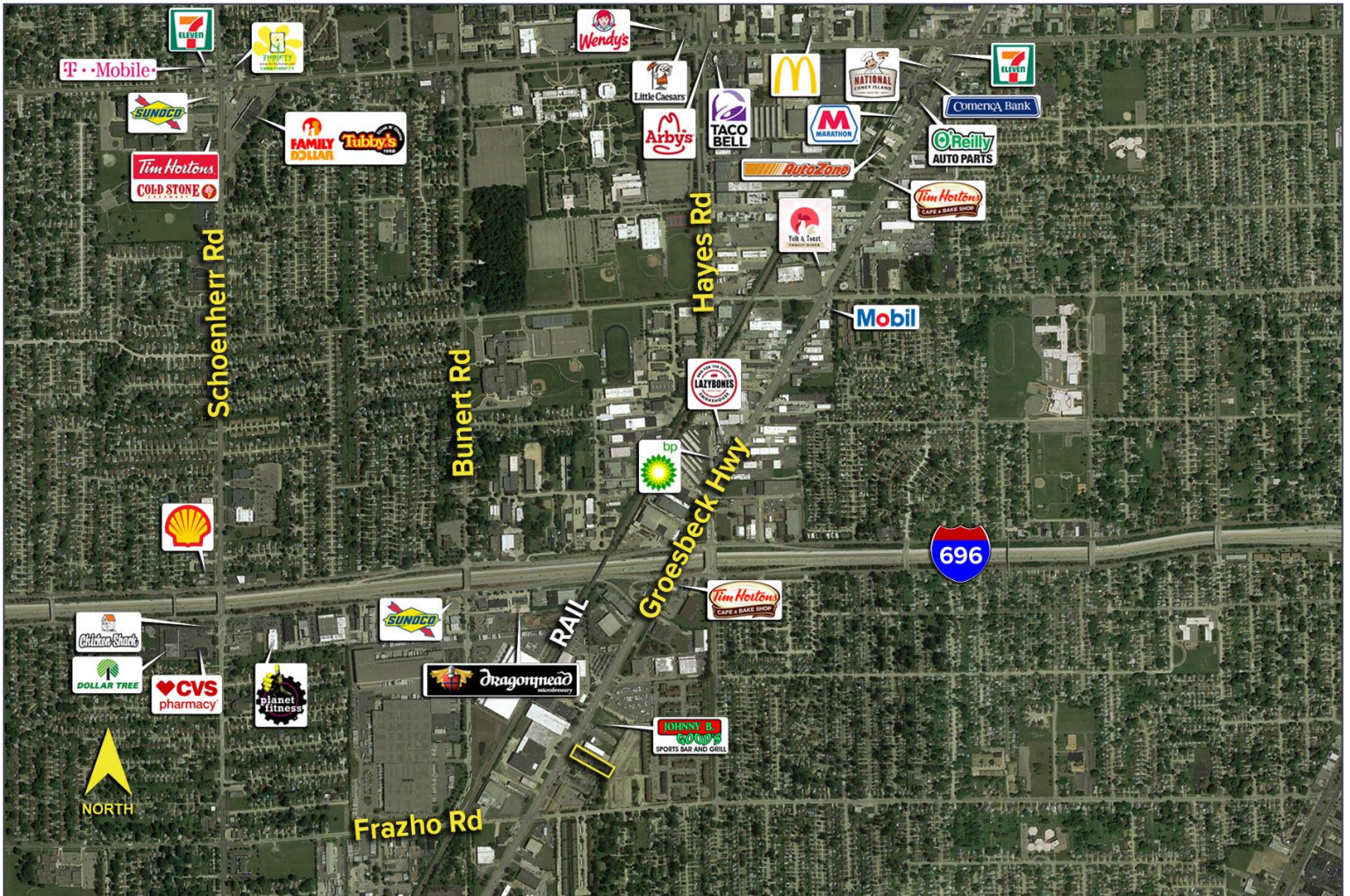


## DEMOGRAPHICS

	POPULATION	MED. HH INCOME
1 MILE	13,629	\$51,462
3 MILE	146,186	\$50,818
5 MILE	361,917	\$52,409

## TRAFFIC COUNTS (TWO-WAY)

16,363	Groesbeck Hwy. N. of Frazho Rd. 2-Way
17,712	Groesbeck Hwy. S. of Frazho Rd. 2-Way
6,143	Frazho Rd. E. of Groesbeck Hwy. 2-Way
3,869	Frazho Rd. W. of Groesbeck Hwy. 2-Way



For more information, please contact:

**PETER VANDERKAAY**

(248) 359 3837

[pvanderkaay@signatureassociates.com](mailto:pvanderkaay@signatureassociates.com)

**PAUL SAAD**

(248) 359 0652

[psaad@signatureassociates.com](mailto:psaad@signatureassociates.com)

**SIGNATURE ASSOCIATES**

One Towne Square, Suite 1200

Southfield, MI 48076

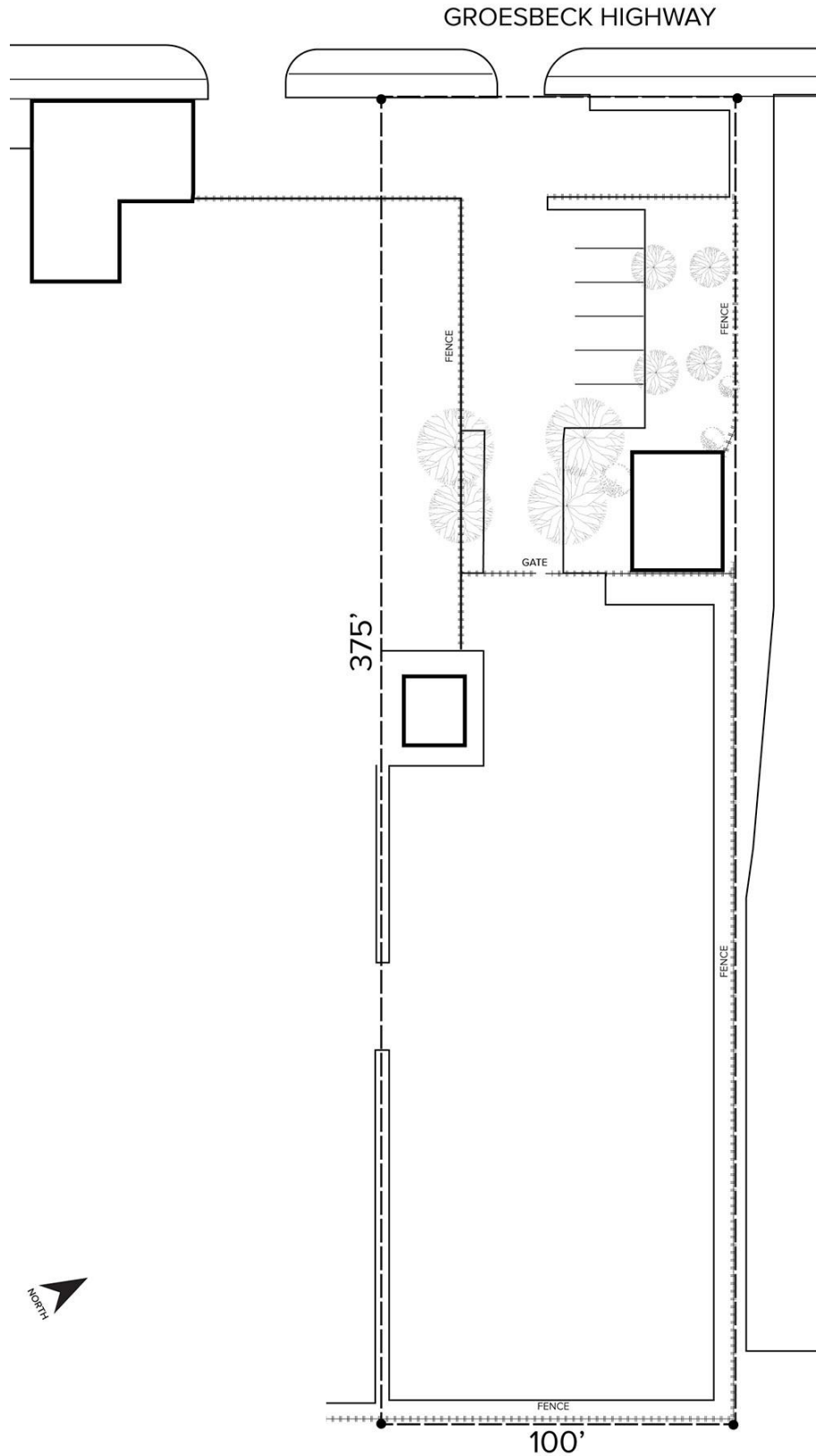
[www.signatureassociates.com](http://www.signatureassociates.com)

# 26160 Groesbeck Highway – Warren, Michigan

Retail/Land For Sale

1,559  
Square Feet/  
0.90  
Acres  
AVAILABLE

## Site Plan



For more information, please contact:

**PETER VANDERKAAY**

(248) 359 3837

[pvanderkaay@signatureassociates.com](mailto:pvanderkaay@signatureassociates.com)

**PAUL SAAD**

(248) 359 0652

[psaad@signatureassociates.com](mailto:psaad@signatureassociates.com)

**SIGNATURE ASSOCIATES**

One Towne Square, Suite 1200

Southfield, MI 48076

[www.signatureassociates.com](http://www.signatureassociates.com)