



CAPITOL  
EQUITIES

# FOR LEASE

Learn more at [capitolequities.com](http://capitolequities.com)

## 5TH AVE + SUMMIT ST, COLUMBUS, OH 43201



RETAIL  
---  
ITALIAN  
VILLAGE

**AVAILABLE:** 1,465 SF General Retail

**RENTAL RATE:** \$34.00 per SF

**CAM + TAXES:** \$5.50 per SF

**UTILITIES:** Will be directly paid by Tenant

**LOCATION:** Great corner site at Fifth Ave + Summit St  
Adjacent to Short North Arts District

**PARKING:** Available on-site garage spaces

**DEMOGRAPHICS:**

Population:	347,511
(5-mile; 2017)	
5-year Pop Growth:	5.64%
Households:	145,626
Av. HH Income:	\$64,306

**TRAFFIC COUNTS:**

Fifth Avenue:	14,023 vpd
Summit Street:	11,754 vpd

**LIKE TO GET MORE INFO?**  
We'd love to hear from you.

**J.R. Kern**

[jrkern@capitolequities.com](mailto:jrkern@capitolequities.com)

P: 614.760.5660 x 124

**Ed Fellows**

[efellows@capitolequities.com](mailto:efellows@capitolequities.com)

P: 614.760.5660 x 123

**Capitol Equities Realty**

P: 614.760.5660

580 N. Fourth Street, Suite 120  
Columbus, Ohio 43215

[capitolequities.com](http://capitolequities.com)

The information contained herein was furnished by sources believed to be reliable, but it is not guaranteed, warranted or represented by Capitol Equities. The presentation of this property is submitted subject to errors, omissions, change of price or condition prior to sale or lease, or withdrawn without notice.



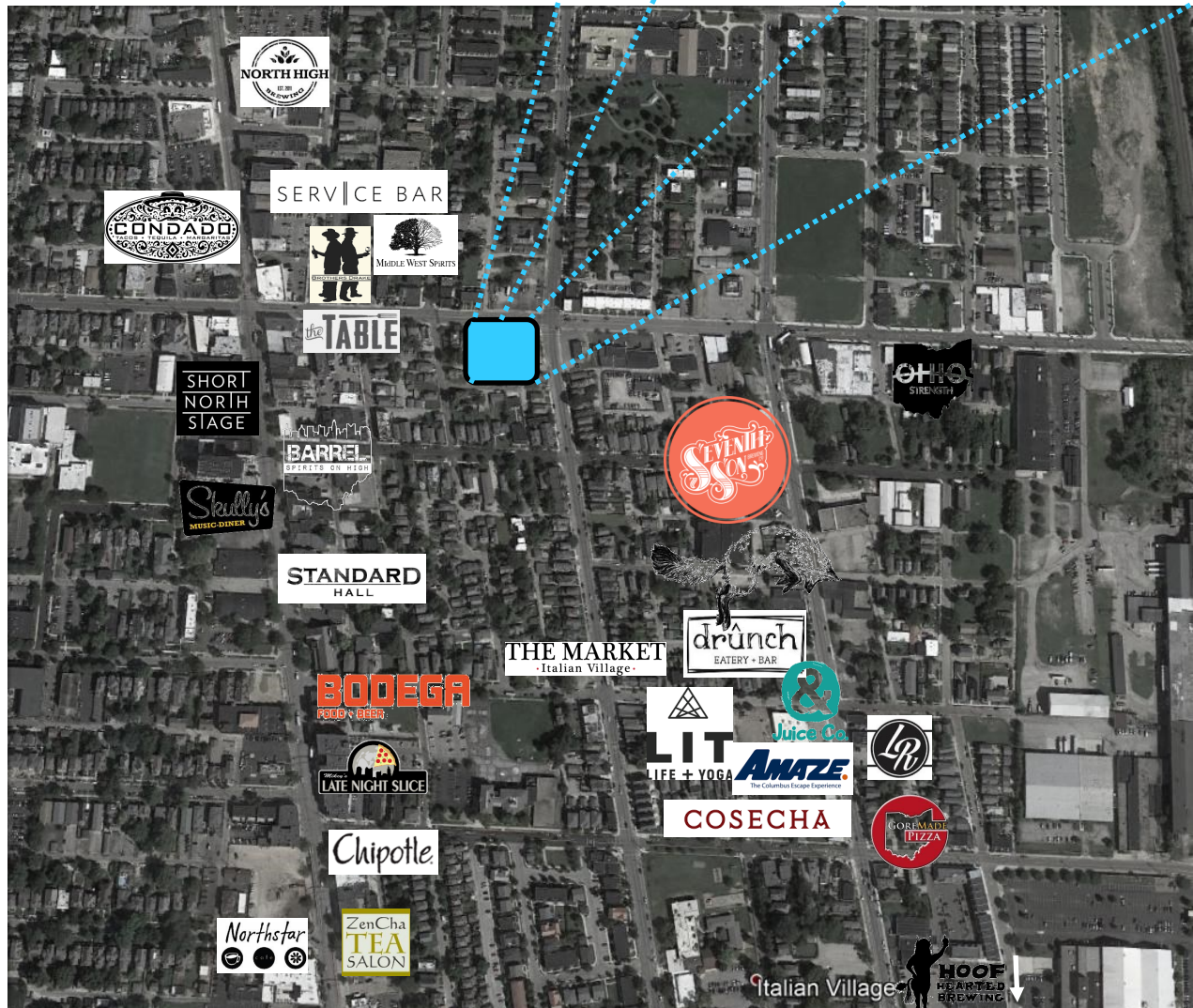
CAPITOL  
EQUITIES

# FOR LEASE

## 5TH AVE + SUMMIT ST, COLUMBUS, OH 43201

### LOCATION + COMMUNITY

- Terrific corner site at East Fifth Ave + Summit St
- In the booming Italian Village neighborhood and adjacent to the Short North Arts District
- Neighbors include some of the hottest local breweries + distillers including Middle West Spirits, Brother's Drake and Seventh Son
- Within 2 blocks of several high-profile residential development projects; high population area.



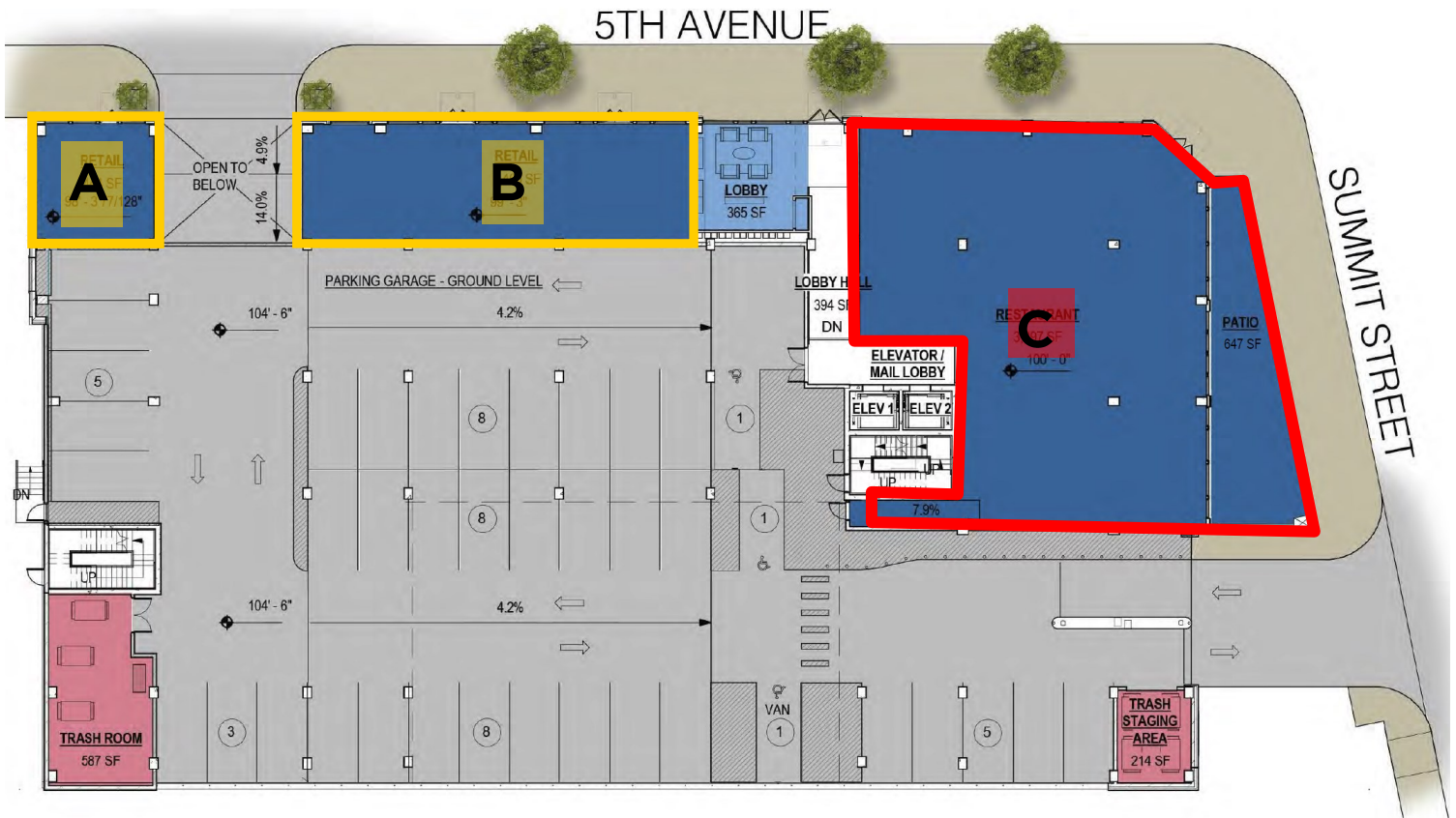


CAPITOL  
EQUITIES

FOR LEASE

5TH AVE + SUMMIT ST, COLUMBUS, OH 43201

SITE PLAN



AVAILABLE SPACES

- Unit A: 444 sf **LEASED**
- Unit B: 1,465 sf General Retail
- Unit C: 3,897 sf: **LEASED**