

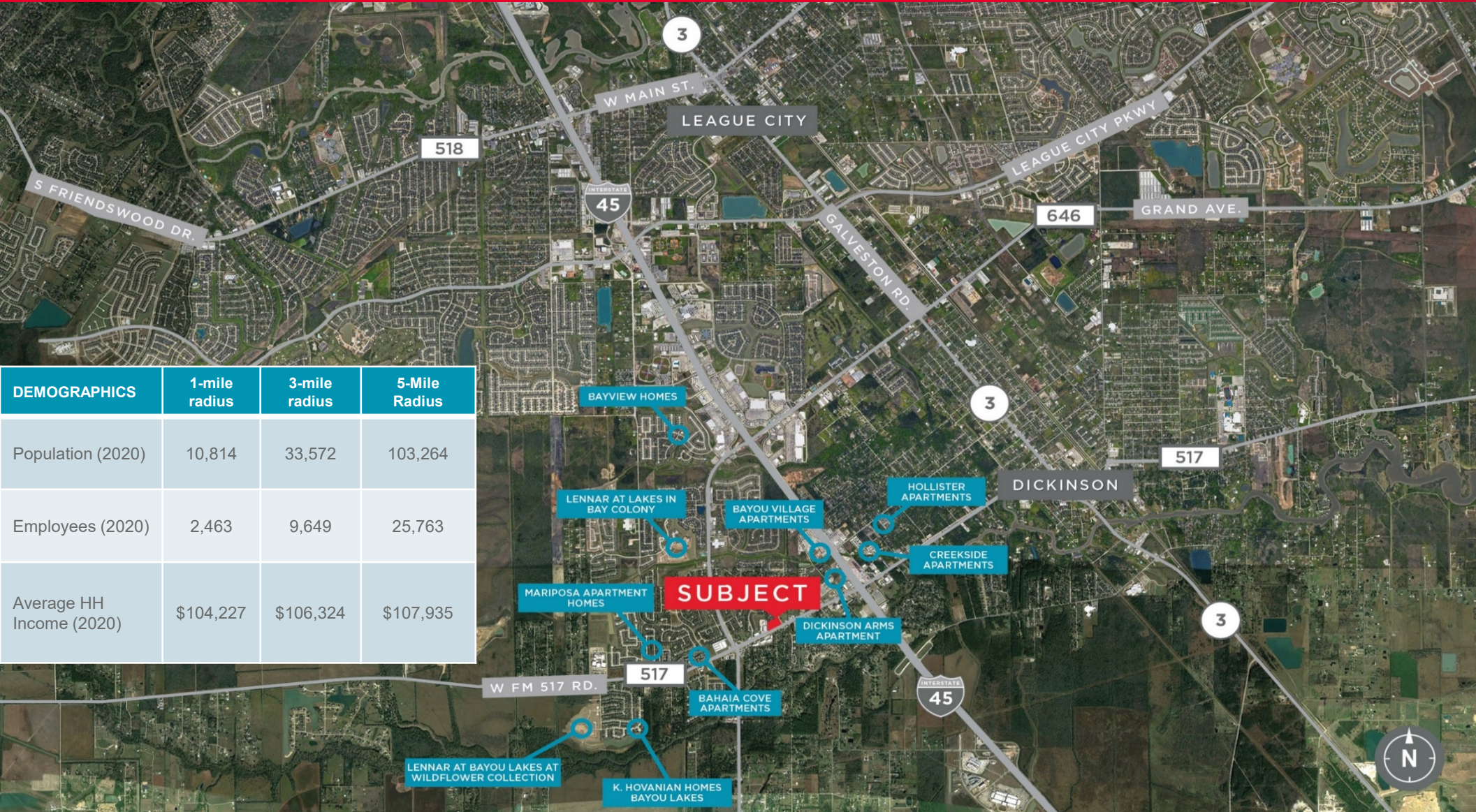


- ±5.23 acres of land
- Parcel Number:0019-0097-0000-000 (Galveston CAD)
- Key Map number: 188-D
- Less than a mile from Interstate 45
- Zoned for Neighborhood Commercial
- Asking price: \$13.00 psf (Total: \$2,961,645.00)
- Traffic Counts:
 - FM 517 west of Dove Meadow Dr.- 33,443
 - FM 517 east of Dove Meadow Dr.- 35,756

Source: TxDOT



±5.23 Acres located at the Northwest Corner of FM 517 and Dove Meadow Drive League City, Texas 77539



For more information, contact:

Meredith T. Cullen
(713) 331 1809
meredith.cullen@cushwake.com

David L. Cook, SIOR, CRE
(713) 963 2888
david.cook@cushwake.com

Cushman & Wakefield
Licensed Real Estate Brokers
1330 Post Oak Boulevard | Suite 2700
Houston, TX 77056
www.cushmanwakefield.com